

U.S.S. MAHAN DLG-11





USS MAHAN
DLG-11





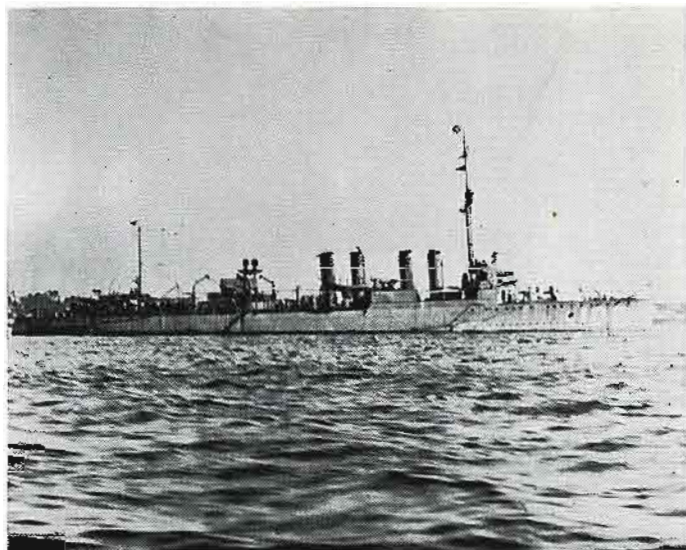
ADMIRAL ALFRED THAYER MAHAN

REAR ADMIRAL ALFRED THAYER MAHAN WAS BORN 27 SEPTEMBER 1840, AT WEST POINT ON THE HUDSON RIVER. HE WAS APPOINTED MIDSHIPMAN ON 30 SEPTEMBER 1856, AND GRADUATED WITH SECOND HONORS FROM THE NAVAL ACADEMY IN 1859. HE SERVED WITH THE SOUTH ATLANTIC AND WESTERN GULF BLOCKADING SQUADRONS AND WAS ON THE STAFF OF ADMIRAL DAHLGREN, OFF CHARLESTON, DURING THE CIVIL WAR. IN 1885 HE WAS CALLED TO THE NEWLY ESTABLISHED NAVAL WAR COLLEGE TO LECTURE ON TACTICS AND NAVAL HISTORY. AFTER LONG PREPARATION IN THE FALL OF 1886, MAHAN DELIVERED THE FIRST OF THE SERIES OF LECTURES THAT WERE TO BECOME WORLD FAMOUS AND WORLD CHANGING, FOLLOWING THEIR PUBLICATION IN 1890 AS "THE INFLUENCE OF SEA POWER UPON HISTORY, 1660-1783". HE PUBLISHED OTHER IMPORTANT BOOKS, BUT THIS FIRST CELEBRATED ONE AWOKE THE WORLD TO THE VAST IMPORTANCE OF SEAPOWER IN THE LIFE OF NATIONS AND IN WORLD HISTORY. COMING AT A TIME OF GREAT TECHNOLOGICAL DEVELOPMENT AND OF THE RISE OF NEW POWERS TO CHALLENGE ENGLAND'S LONG LEADERSHIP AT SEA, THE BOOK HAS PROFOUND EFFECT UPON THE THINKING AND POLICIES OF MANY NATIONS.

HE WAS PRESIDENT OF THE NAVAL WAR COLLEGE, 1886-1892 AND 1892-1893. IN 1893 HE COMMANDED USS CHICAGO. WHILE SERVING IN THIS DUTY ON EUROPEAN STATIONS, HE WAS HONORED BY MANY DISTINGUISHED PERSONAGES OF EUROPE AND WAS PRESENTED SEVERAL HONORARY DEGREES.

HE RETURNED TO THE NAVAL WAR COLLEGE IN 1895 AND RETIRED ON 17 NOVEMBER 1896. HE WAS RECALLED TO ACTIVE DUTY AT THE BEGINNING OF THE SPANISH AMERICAN WAR, AND THEREAFTER SERVED ON MANY BOARDS AND COMMITTEES. HE WAS PROMOTED TO REAR ADMIRAL ON 29 JUNE 1906. HE DIED AT WASHINGTON D. C. ON 1 DECEMBER 1914 AND IS BURIED AT QUOQUE, LONG ISLAND.

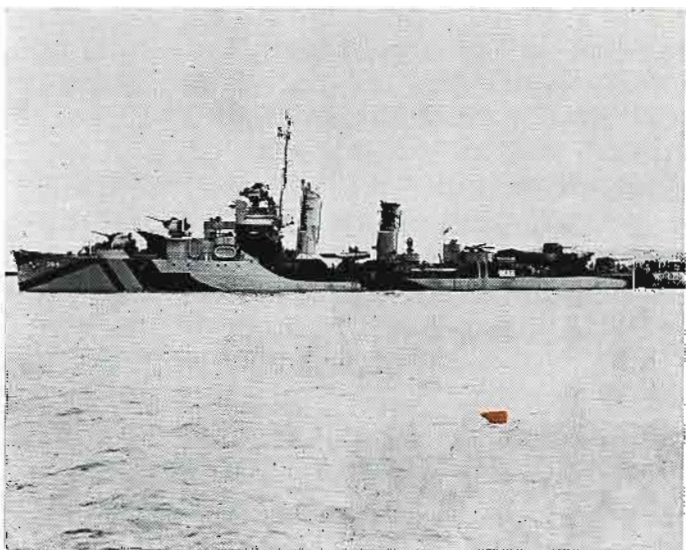
FIRST SHIP OF THE FLEET TO BEAR THE HONORED NAME MAHAN. HER FIRST DUTY WAS IN THE AZORES AS STATION SHIP FOR HISTORIC FLIGHTS OF NC-1, NC-3 AND NC-4. SHE WAS CONVERTED TO A MINELAYER (DM-7) IN JUNE 1919, AND FOR THE NEXT 10 YEARS OPERATED WITH THE FLEET ALONG THE ATLANTIC SEABOARD AND IN THE CARIBBEAN SEA, WITH FREQUENT TRIPS TO SOUTH AMERICA. DECOMMISSIONED IN MAY OF 1930.



USS MAHAN (DD 102)
24 OCT. 1918-1 MAY 1930

LAUNCHED 15 OCTOBER 1935 AND COMMISSIONED IN SEPTEMBER 1936. PRIMARILY ENGAGED IN FLEET TRAINING AND PATROL OUT OF PEARL HARBOR UNTIL ADVENT OF JAPANESE ATTACK. SHE MISSED ATTACK, HAVING SAILED FROM PEARL TWO DAYS PREVIOUSLY. DURING THE WAR SHE COMPILED AN IMPRESSIVE RECORD IN THAT INCLUDED 10 AIRCRAFT KILLS AND COMPANY WITH ANOTHER DESTROYER, THE SINKING OF ONE SHIP. SHE WAS SUNK DECEMBER 7, 1944 DURING A KAMIKAZE ATTACK IN WHICH THREE ENEMY BOMBERS CRASHED INTO HER. SHE SHOT DOWN TWO OTHER BOMBERS DURING THE ATTACK.

USS MAHAN (DD 364)
18 SEPT 1936-7 DEC 1944





USS MAHAN (DLG-11)

USS MAHAN (DLG-11) WAS COMMISSIONED 25 AUGUST 1960 AND IS THE 3RD U.S. SHIP TO BEAR THE NAME MAHAN.

SHE WAS BUILT BY SAN FRANCISCO NAVAL SHIPYARD, THE FIRST SHIP TO BE BUILT FROM THE KEEL UP BY THAT FACILITY. MAHAN IS 512 FEET IN LENGTH WITH A 50 FOOT MAXIMUM BEAM, AND CARRIES 350 ENLISTED MEN AND 25 OFFICERS.

MAHAN'S MAIN BATTERY IS THE TERRIER SUPERSONIC ALL WEATHER GUIDED MISSILE, CAPABLE OF SEEKING OUT AND DESTROYING APPROACHING HOSTILE AIRCRAFT AT GREAT DISTANCES. IN ADDITION SHE CARRIES ONE 5"/54 AND TWO 3"/50 CALIBER GUNS. THE ANTI-SUBMARINE BATTERY CONSISTS OF THE POWERFUL ASROC SYSTEM AND TWO, TRIPLE TUBE, TORPEDO LAUNCHERS.

MAHAN IS ALSO EQUIPPED WITH THE MODERN NTDS EQUIPMENT, UTILIZING COMPUTERS FOR THE COLLECTION, EVALUATION, AND DISPLAY OF COMBAT INFORMATION.

MAHAN IS ONE OF THE NAVY'S LATEST AND MOST ADVANCED SHIPS OF WAR AND CAN SPEAK LOUDLY FOR SEAPOWER IN THE CAUSE OF PEACE. VIGILANCE IS THE PRICE OF PEACE, AND PEACE THROUGH SEAPOWER IS OUR MOTTO.

COMMANDING OFFICER



CDR DAVID M. ALTWEGG

COMMANDER DAVID M. ALTWEGG WAS BORN ON 24 FEBRUARY 1930 IN WATERTOWN, NEW YORK, THE SON OF EMIL AND ALLENE (MATTSON) ALTWEGG.

AFTER ENTERING THE NAVY IN MAY 1947, COMMANDER ALTWEGG ATTENDED THE AVIATION ELECTRONICS SCHOOL IN MEMPHIS, TENNESSEE FOR ONE YEAR BEFORE ENTERING THE U. S. NAVAL ACADEMY AT ANNAPOLIS. HE WAS GRADUATED FROM THE ACADEMY WITH THE CLASS OF 1952 AND COMMISSIONED AN ENSIGN AT THAT TIME.

COMMANDER ALTWEGG FIRST SERVED IN THE ATTACK AIRCRAFT CARRIER USS ORISKANY (CVA 34) AS A DIVISION OFFICER WHILE THE SHIP WAS OPERATING IN THE PACIFIC WITH THE SEVENTH FLEET. DETACHED FROM ORISKANY IN JULY 1954, HE REPORTED AS AIDE AND FLAG LIEUTENANT TO THE STAFF OF COMMANDER CRUISER DIVISION ONE FOR THE FOLLOWING TWO YEARS.

DETACHED FROM COMCRUDIV ONE IN JULY 1956, COMMANDER ALTWEGG NEXT REPORTED TO THE U. S. NAVAL POSTGRADUATE SCHOOL IN MONTEREY, CALIFORNIA, WHERE HE STUDIED FOR TWO YEARS TO RECEIVE HIS BACHELOR OF SCIENCE DEGREE IN ELECTRICAL ENGINEERING. FOLLOWING GRADUATION, HE CONTINUED HIS STUDIES, THIS TIME AT THE MASSACHUSETTS INSTITUTE OF TECHNOLOGY IN CAMBRIDGE, MASSACHUSETTS. HE WAS AWARDED A MASTER OF SCIENCE DEGREE FOLLOWING COURSE COMPLETION IN JUNE 1959.

RETURNING TO SEA DUTY, COMMANDER ALTWEGG WAS ATTACHED TO THE DESTROYER, USS CONE (DD 866) AS OPERATIONS OFFICER AND NAVIGATOR DURING THE SHIP'S OPERATIONS WITH THE SECOND AND SIXTH FLEETS FROM JULY 1959 TO JANUARY 1961. FROM CONE HE WAS ORDERED TO THE U. S. NAVAL GUIDED MISSILE SCHOOL, DAMNECK, VIRGINIA TO STUDY BRIEFLY BEFORE REPORTING ON BOARD THE WORLD'S FIRST NUCLEAR POWERED GUIDED MISSILE FRIGATE, USS BAINBRIDGE (DLG (N) 25), AS WEAPONS OFFICER. DETACHED FROM BAINBRIDGE IN DECEMBER 1963, COMMANDER ALTWEGG SUBSEQUENTLY SERVED IN THE GUIDED MISSILE FRIGATE USS DEWEY (DLG 14) AS EXECUTIVE OFFICER UNTIL FEBRUARY 1965. AFTER FURTHER STUDIES AT THE NAVAL NUCLEAR POWER SCHOOL IN BAINBRIDGE, MARYLAND, AND AT THE NUCLEAR POWER TRAINING UNIT IN SCHENECTADY, NEW YORK, COMMANDER ALTWEGG REPORTED AS FORCE ARMAMENT OFFICER TO THE STAFF OF COMMANDER CRUISER-DESTROYER FORCE, U. S. PACIFIC FLEET, IN SAN DIEGO, CALIFORNIA. HE WAS ATTACHED TO COMCRUDESPAC FROM MARCH 1966 TO JUNE 1968, WHEN HE RETURNED TO FRIGATE DUTY AS COMMANDING OFFICER OF USS MAHAN (DLG 11).

COMMANDER ALTWEGG HAS BEEN AWARDED, THE NAVY COMMENDATION MEDAL, THE KOREAN PRESIDENTIAL UNIT CITATION, THE NATIONAL DEFENSE MEDAL, THE CHINA SERVICE MEDAL, THE UNITED NATIONS SERVICE MEDAL, THE KOREAN CAMPAIGN MEDAL WITH TWO STARS, THE VIETNAM SERVICE MEDAL, AND THE VIETNAM CAMPAIGN MEDAL.



I AM VERY PLEASED AND PROUD TO PRESENT TO YOU THE 4TH MAHAN CRUISE BOOK, AND VOLUME 1 OF A TWO VOLUME EDITION THAT WILL COVER OUR TWO YEAR WESTPAC CRUISE. BETWEEN THESE COVERS ONE CAN FIND REFLECTED ON EVERY PAGE THE SPIRIT OF MAHAN, AND THE MEMORIES OF HER FIRST YEAR IN THE ORIENT. MEMORIES OF PORTS, FRIENDSHIPS, HOMECOMINGS, SEPARATIONS, LEISURE HOURS, HARD WORK, PLEASANT TIMES, AND TIMES NOT SO PLEASANT, BUT ALL MEMORIES. MEMORIES THAT STRETCH FROM THE WESTERN UNITED STATES COASTLINE TO THE FARTHEST REACHES OF THE EXOTIC FAR EAST. MEMORIES AND EXPERIENCES THAT WOULD NOT BE FORGOTTEN CERTAINLY, BUT ARE RECORDED HERE FOR POSTERITY LEST THEY DIM WITH AGE. I FEEL THIS CRUISE BOOK SUCCESSFULLY CAPTURES THE HIGH SPIRIT AND MORALE OF THE CREW, A CREW I CALL THE FINEST I HAVE BEEN ASSOCIATED WITH DURING MY YEARS IN THE NAVY, AND I AM PROUD TO HAVE BEEN CALLED THEIR CAPTAIN. I WOULD HOPE THAT EACH OF YOU HAS ENJOYED THIS PAST YEAR ON MAHAN AS MUCH AS I HAVE ENJOYED BEING YOUR COMMANDING OFFICER. HERE FOR YOU IS A RECORD OF THAT YEAR'S EVENTS AND ACTIVITIES; A RECORD TO WHICH EACH OF YOU HAS CONTRIBUTED SIGNIFICANTLY. MY WISH IS THAT WHEN YOU LEAVE THE SHIP, YOU WILL REFER TO THE BOOK OFTEN AND REMEMBER THE CREW, THE TIME, THE PLACE, THE SPIRIT THAT WAS MAHAN 1968-1969.

EXECUTIVE OFFICER



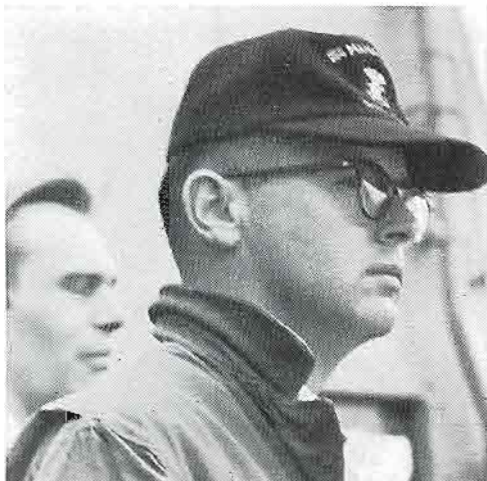
LCDR ROBERT E. RUMNEY

LCDR RUMNEY IS A RESIDENT OF NEW BEDFORD, MASSACHUSETTS, THE SON OF MR. AND MRS. JOHN E. RUMNEY.

HE ATTENDED NEW BEDFORD HIGH SCHOOL AND THE MASSACHUSETTS MARITIME ACADEMY, GRADUATING FROM THE ACADEMY IN 1957. UPON GRADUATION LCDR RUMNEY WORKED FOR A YEAR WITH AMERICAN EXPORT LINES AS A JUNIOR THIRD ASSISTANT ENGINEER. HE ENTERED THE NAVY IN SEPTEMBER 1958.

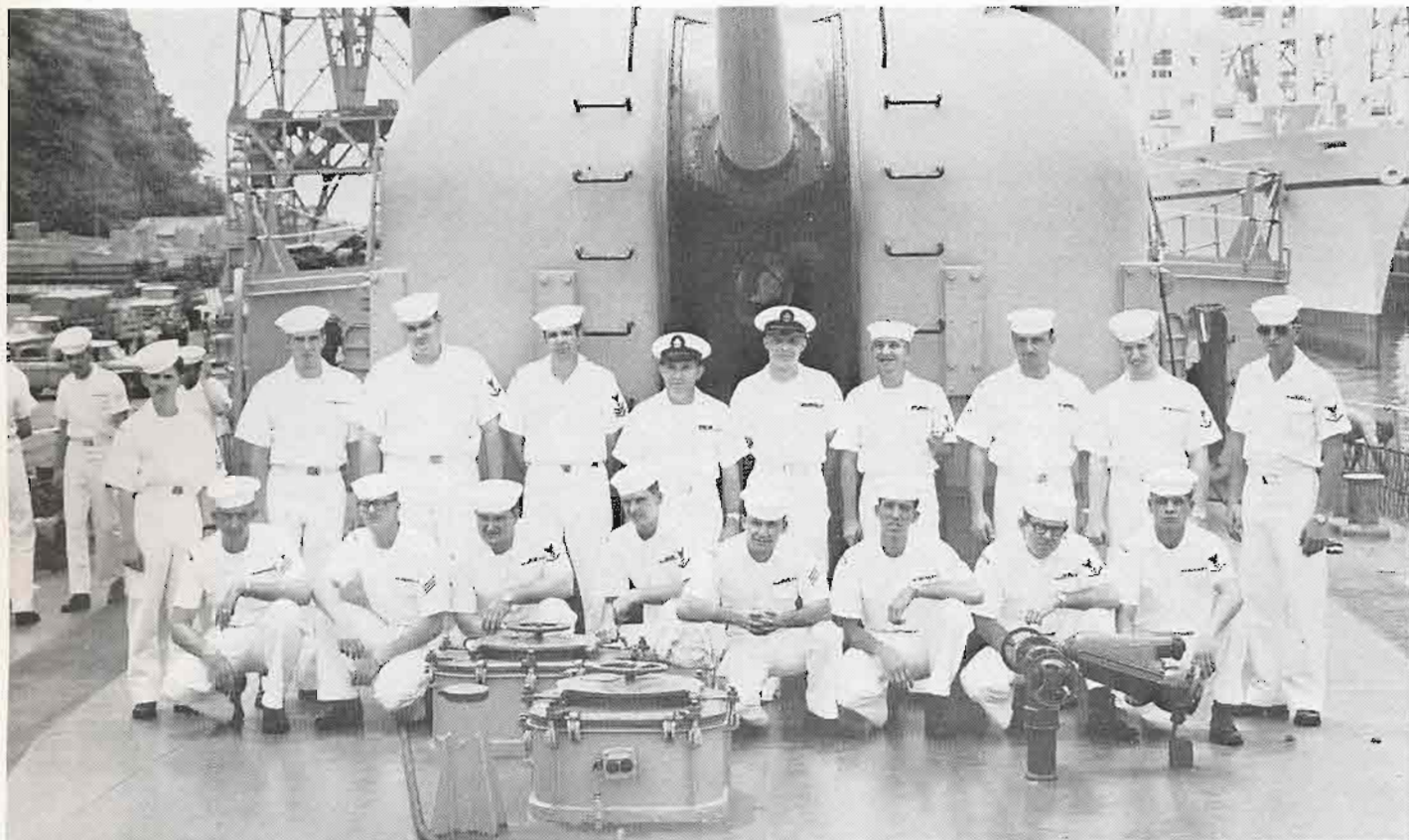
HIS FIRST ACTIVE DUTY WAS AS ENGINEER OFFICER ABOARD USS DANIEL A. JOY (DE 585) FROM SEPTEMBER 1958 TO JULY 1960 AND THEN AS OPERATIONS OFFICER UNTIL JULY 1961. IN 1961 HE REPORTED ABOARD USS UTE (ATF 76) AND SERVED AS EXECUTIVE OFFICER UNTIL JUNE 1963.

IN 1963 LCDR RUMNEY ENTERED U. S. NAVAL POSTGRADUATE SCHOOL AND ATTENDED THROUGH MAY 1966. HE COMPLETED THE ENGINEERING SCIENCE CURRICULUM AND NAVAL ENGINEERING CURRICULUM AND WAS AWARDED A BS DEGREE IN ELECTRICAL ENGINEERING. HE REPORTED ABOARD USS STERETT (DLG 31) IN SEPTEMBER 1966 AS ENGINEER OFFICER AND SERVED IN THAT CAPACITY UNTIL REPORTING AS EXECUTIVE OFFICER ABOARD MAHAN IN APRIL OF 1968.





M-DIVISION



BACK ROW L-R REDMON MM2, WADKOWSKI KK3, HAMEL MM3, WOODS MM1, BURCH MMC,
PEARSON MMC, YOUNG MM2, LABARR MM2, SIMPSON MM3, BUTTERFIELD MM3.
FRONT ROW L-R HINES FN, CORLEY FN, HOSE MM3, CONLEY MM3, HAMMOND FN,
HARDENBURGH MM3, THOMAS MM3, SPECHT MM3.





WE MADE THE WATER! CAN'T WE DRINK IT?



THEY WILL NEVER FIND US UNDER HERE!

HI! HO! HI! HO! IT'S OFF TO WORK WE GO!?



WHAT DO YOU MEAN WE CLOSED THE WRONG VALVE?





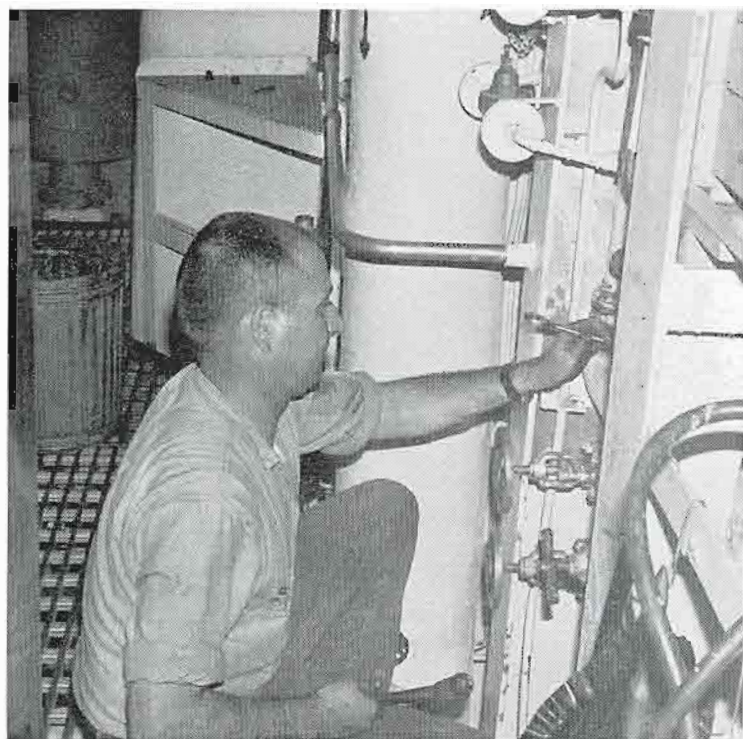
LUBE OIL PUMP??



ONE SMOKE THEN BACK TO WORK



LITTLE OLE GROUND DETECTOR



NOW FOR THE HAMMER

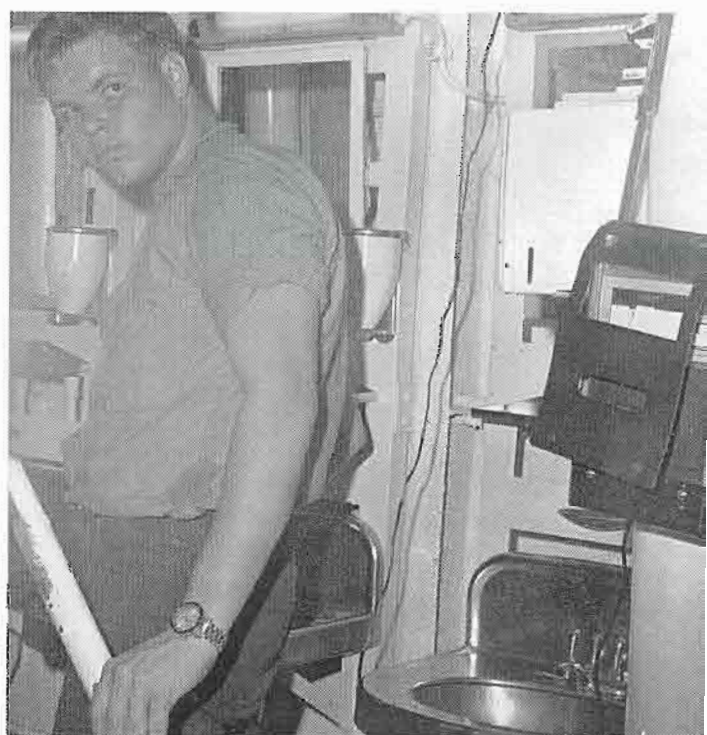


DON'T LOOK, WE'LL FIX IT

I LIKE J. C.



FN IN CHARGE OF ENG. HEAD



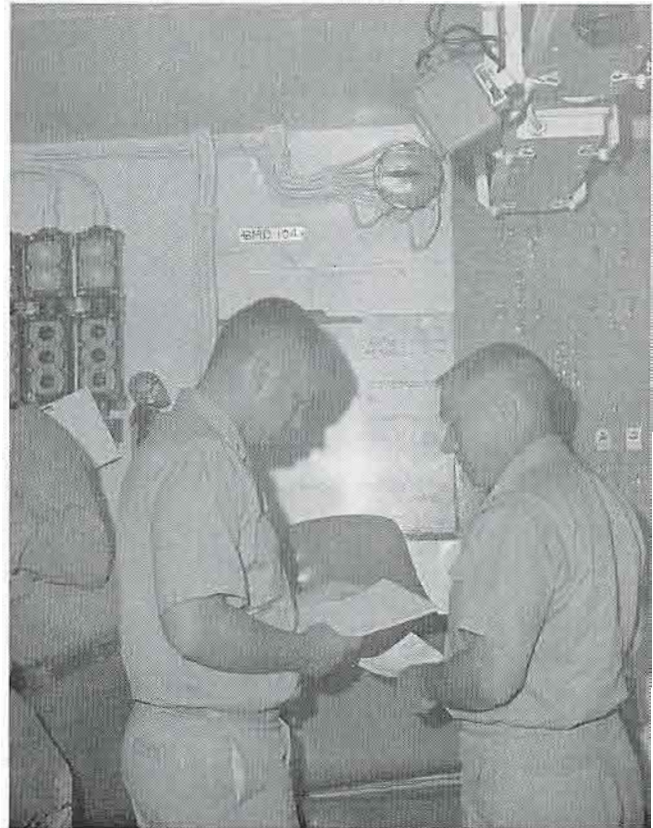


I TOLD YOU WE NEEDED AN ANTENNA FOR THIS TV!

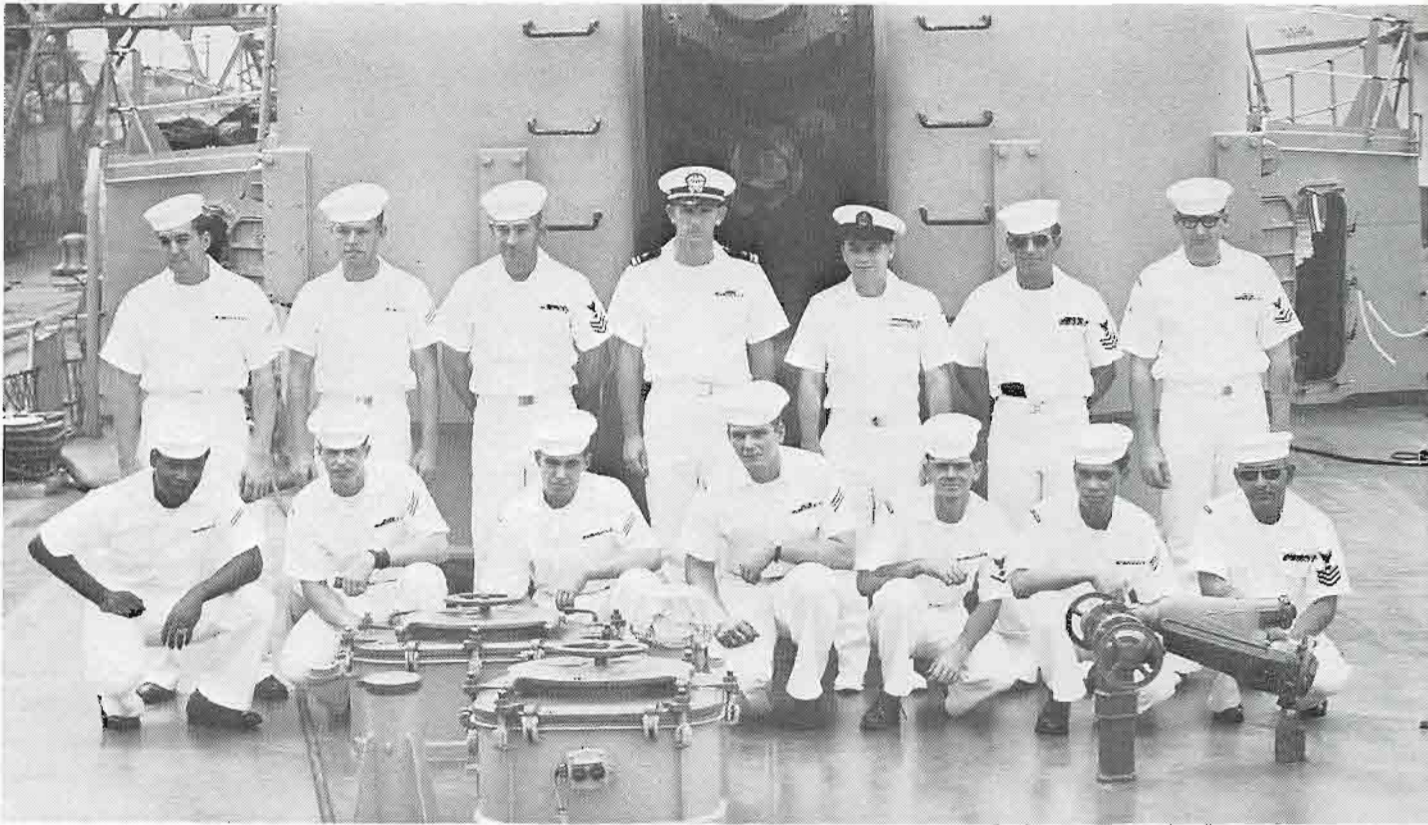


NO! IT'S NOT A NEW KIND OF ROLLER SKATE

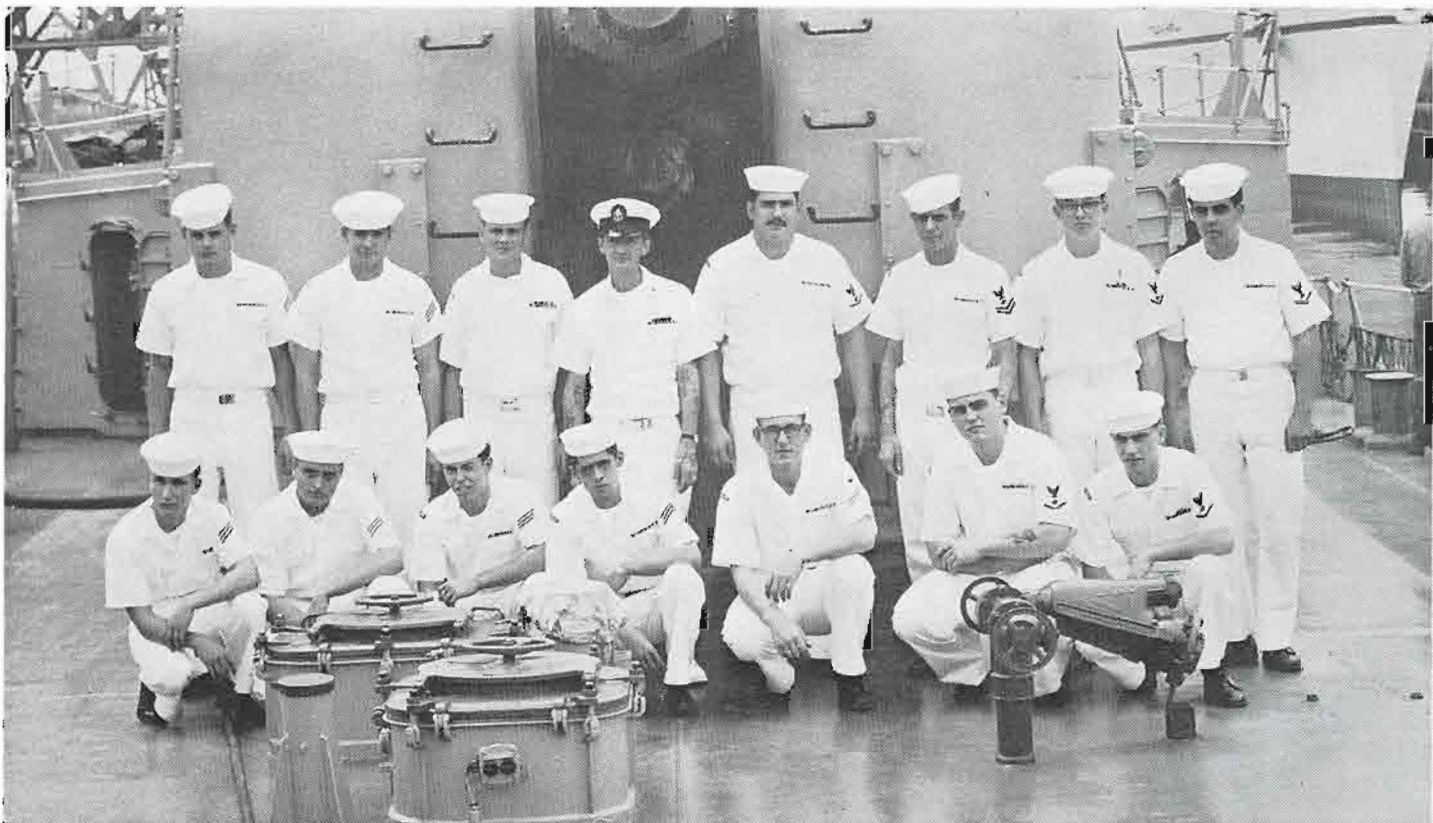
YOU THINK WE CAN MAKE IT INTO PORT???



B-DIVISION



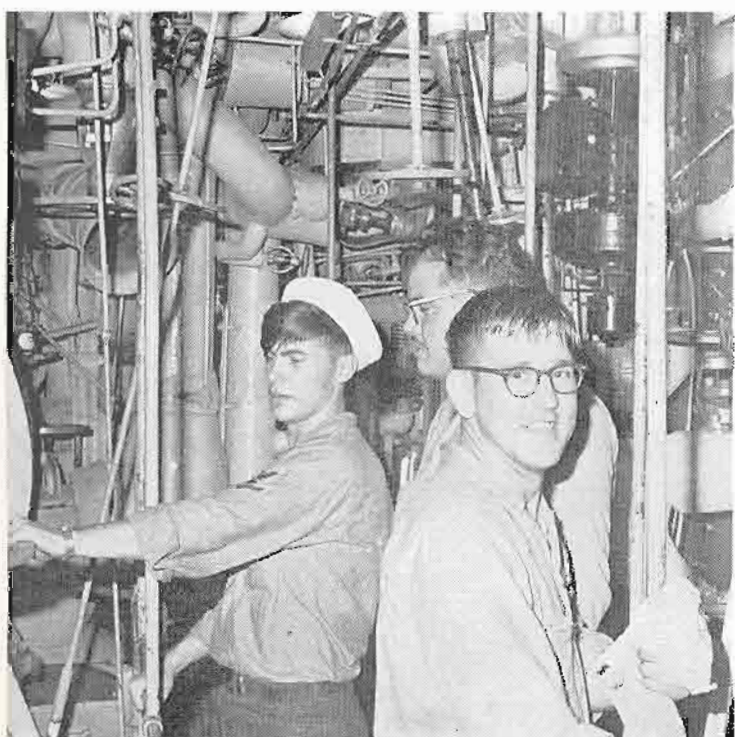
BACK ROW L-R SVOBODA FN, BALDWIN FN, MARTIN BT1, LTJG McDOWELL, PEARSON BTC,
SNELL BT1, CHEW BT2,
FRONT ROW L-R LARS FN, LAMBERT FN, DAVIDSON FN, THOMAS FN, LOGAN BT2, BALICO FN,
ALLEN BT1.



BACK ROW L-R AULBUR FN, SMITH FN, LINQUIST BT2, MAGAFFIN BTC, HALOSKI BT3, TURNER
BT2, PETERSON BT3, TADLOCK BT3.
FRONT ROW L-R MCLAUGHLIN FN, MASSEY FN, WINEMILLER FN, FAZ FN, FAUST FN, KUMM
BT3, DAVIS BT3.



B DIVISION AT WORK AND PLAY

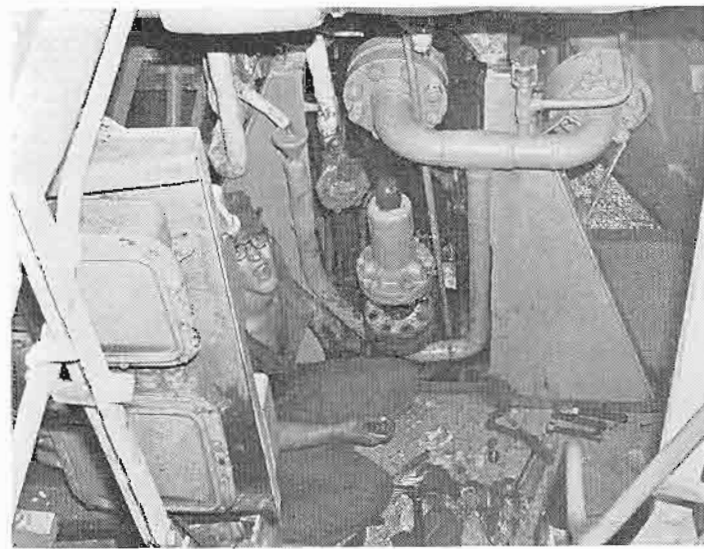




YEA ! BUT WHAT ROUND VALVE WHEEL ?



I NEED AN 15/16" WRENCH ! NOT 1/2" WRENCH ?

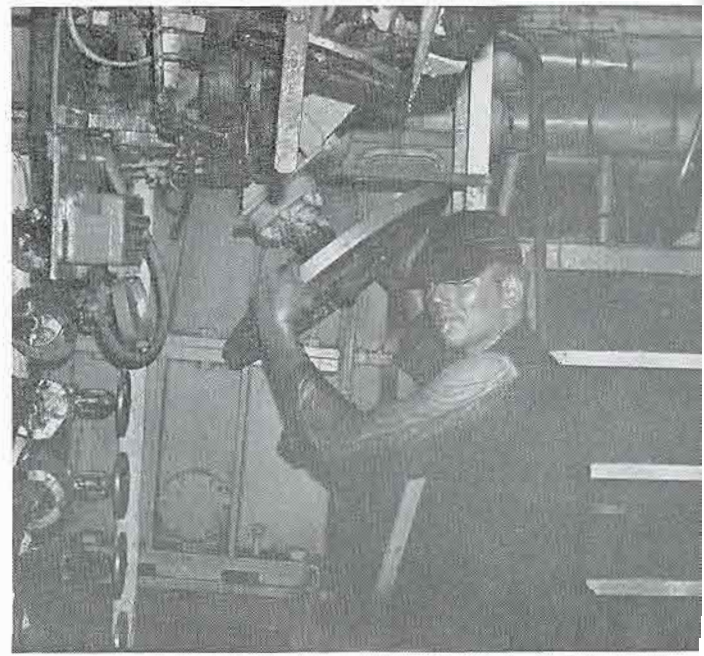


SOMEBODY HELP ME ! DOZO !

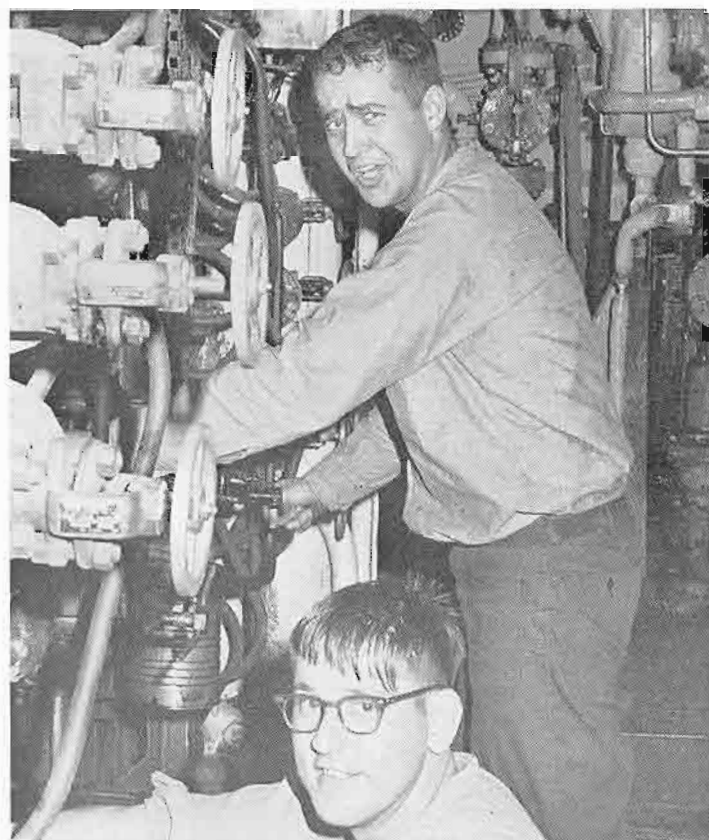
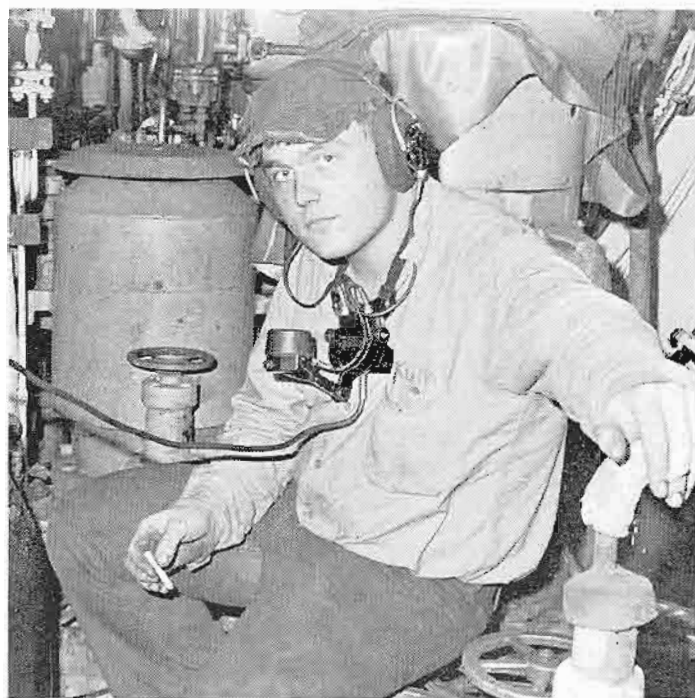
YOU THINK THE CHIEF WILL FIND US DOWN
HERE ?



WATCH THIS, MAN !



WHAT DO YOU MEAN, THE SMOKING LAMP IS
OUT?



THIS WOULD BE EASY IF I KNEW WHAT I WAS
DOING.

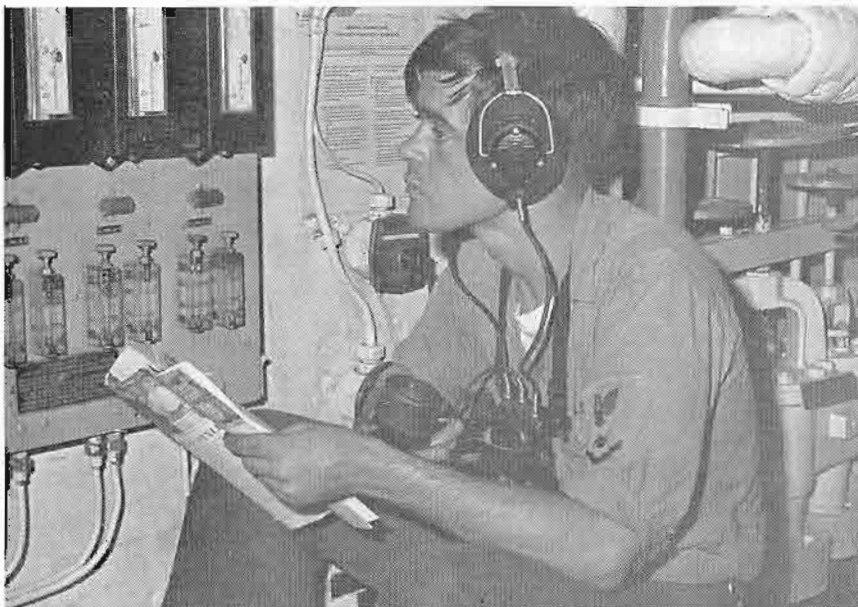




ORGANIZATION, MEDITATION & RELAXATION.



I DIDN'T SEE ANY LIGHT
COME ON!

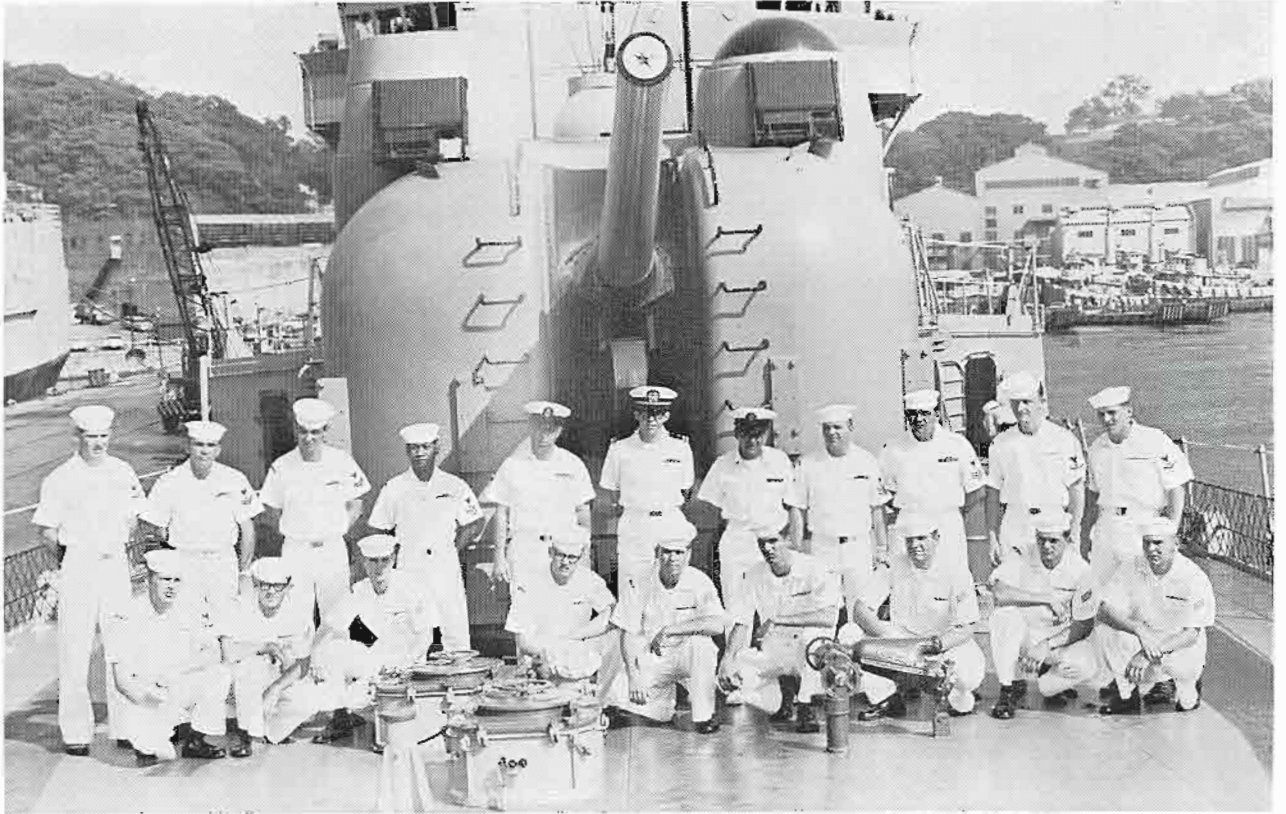


HE NEEDS A WIFE.



I USED TO KNOW WHAT ALL THESE DIALS MEANT

R-DIVISION



BACK ROW L-R: KLEPPE EN3, TRIMBLE EN2, WATKINS SFP2, MEDINA MR1, MULLIGAN DCCS, LT THOMPSON, ZIMMERMAN MMCS, KINGON MM1, HAUN DC1, SNIDER MM3, DAVIS MM3.

FRONT ROW L-R: KIRKENDALL SFM3, WHIRRY FN, THUMM FN, VELTKAMP FN, BENDER FN, WANTIN FN, WEBB FN, MEROSHNEKOFF FN, STADSVOLD FN.



INTELLIGENCE AT ITS PEAK



I KNEW WE COULDN'T HIDE FOREVER.

I SURE HOPE I MAKE FIRST.



I WISH I WAS A CHIEF!

HA! HA! HE'LL NEVER GET
OUT OF THERE!



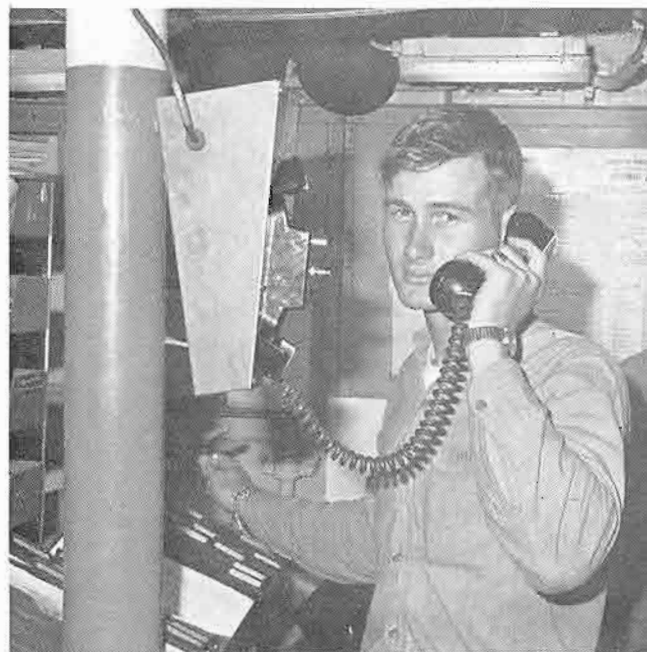
THERE'S ALWAYS TIME FOR A JOKE.

REENLISTMENT OF HAUN DCI





THIS LEVER SHOULD RAISE A DISTURBANCE



BUT CHIEF, IT'S JUST MY MOTHER.

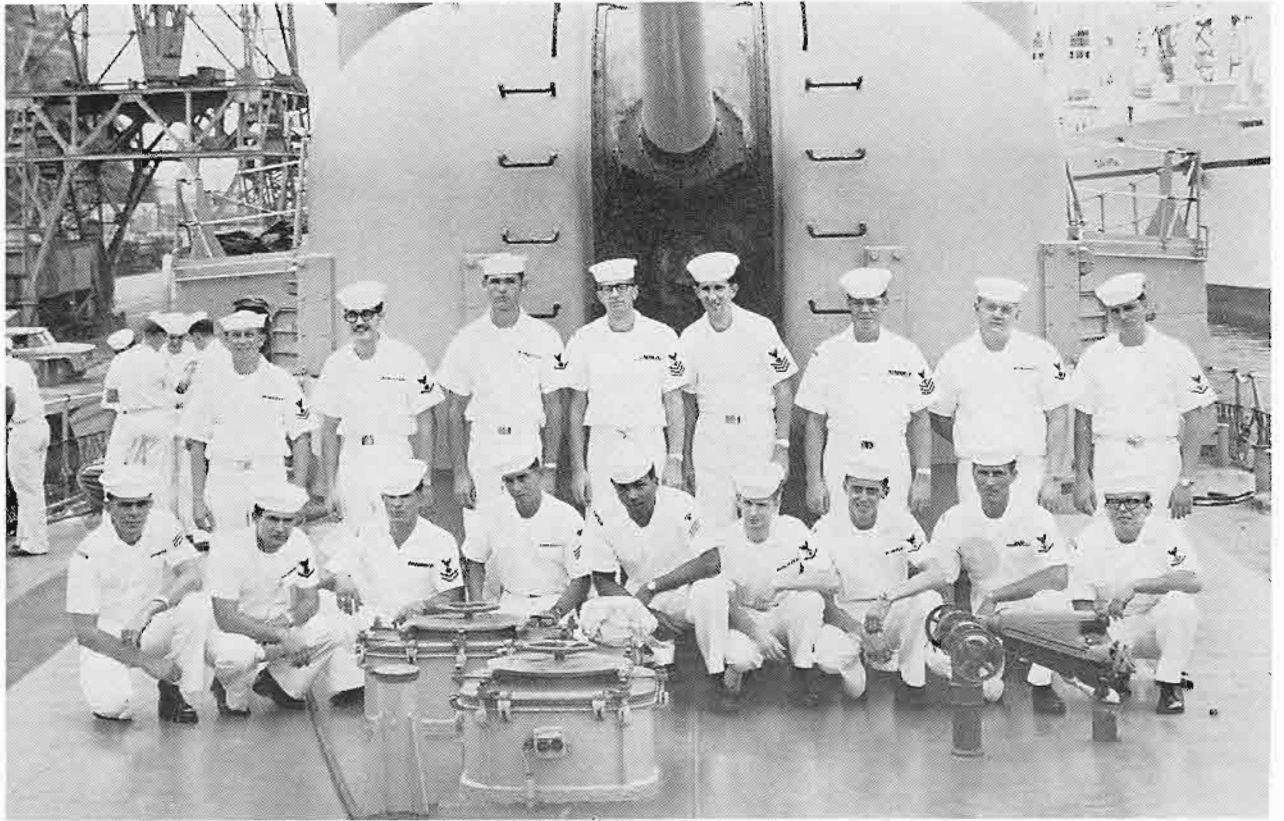
SOMEDAY THIS WILL SAVE SOMEONE'S LIFE!!



SPANKY'S GANG? NO, ITS JUST SOME OF "A" GANG



E-DIVISION

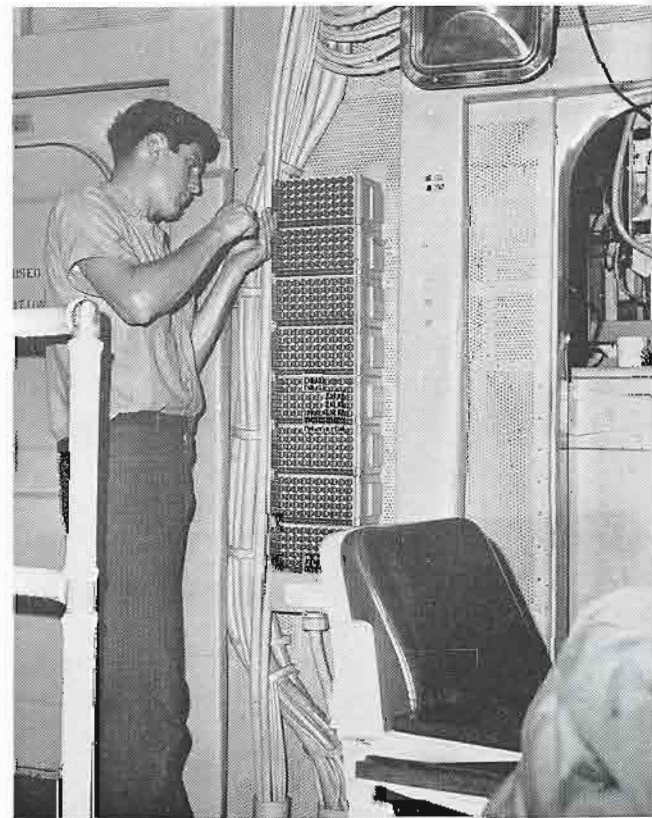


BACK ROW L-R: KIDD EM2, CASTRO EM3, SCHMIEDEKE EM3, TURNER IC1, MYERS EM1, LEE IC1, RAYMOND EM3, MEADS IC3.

FRONT ROW L-R: SNAPKA FN, BITLER EM3, STROW EM2, SHUMWAY ICFN, ADAMS ICFN, METCALF IC3, LONG, SPYCHER IC3, SHUMSKY IC3.



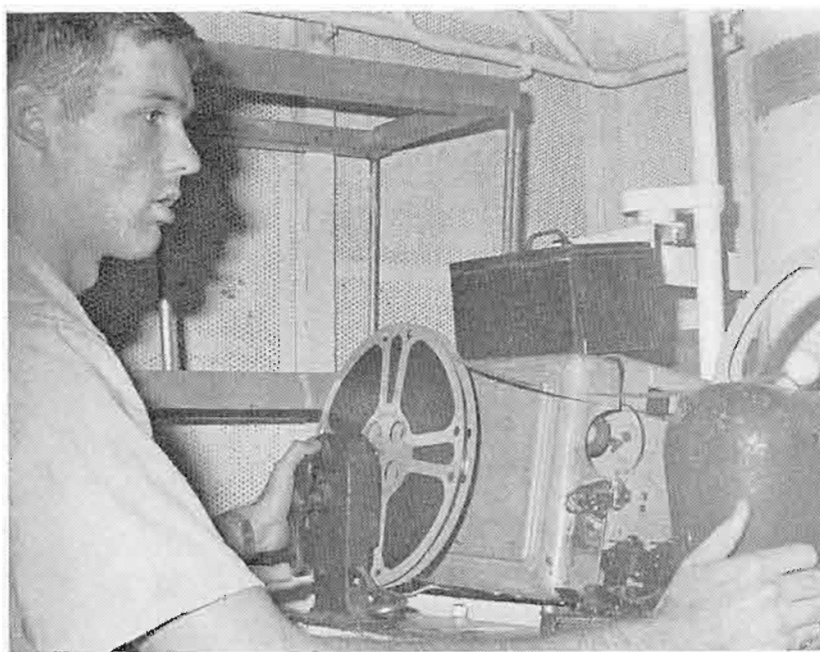
ELECTRICIANS



IC-MEN

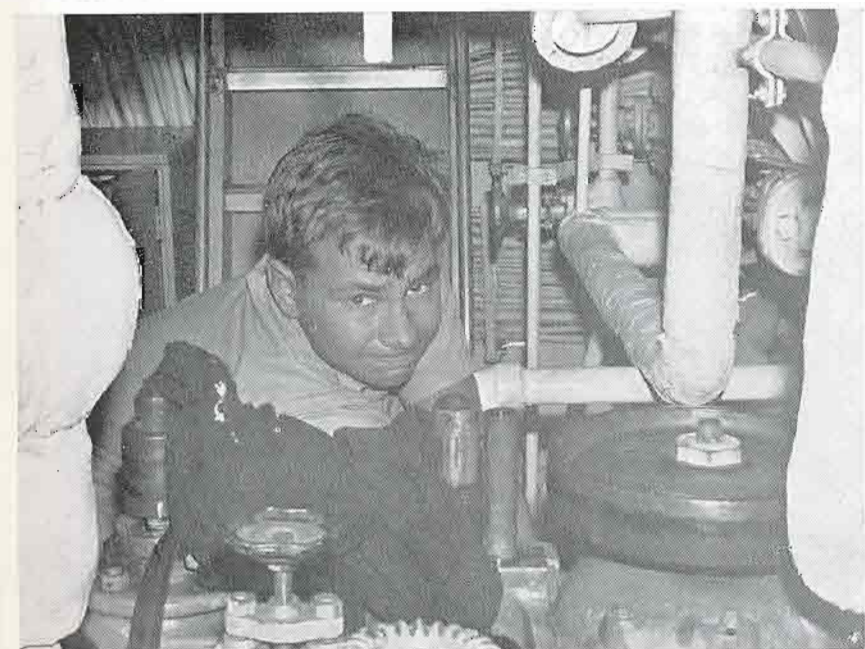


MAN I'M AN "EM" NOT A "PN"

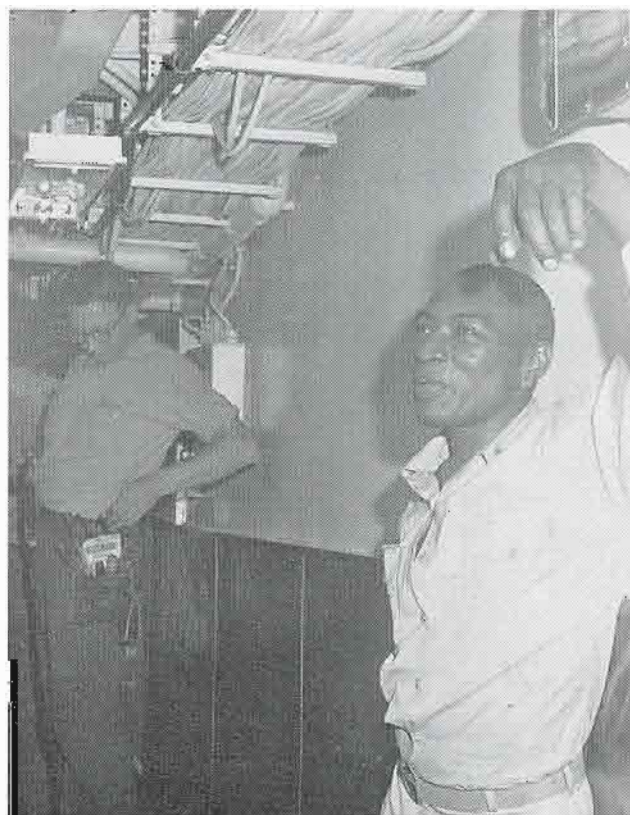


THE WIZARD OF OZ!?

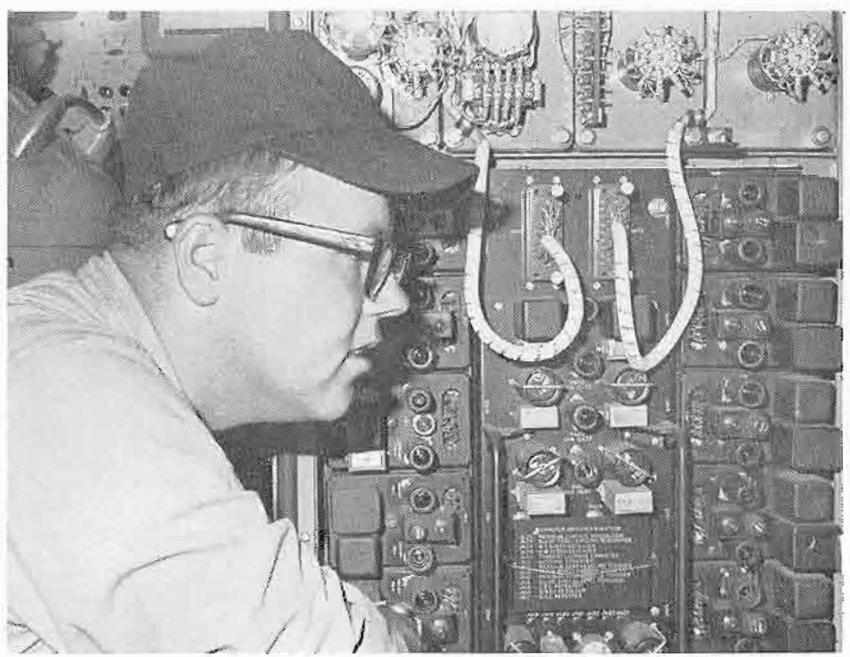
HELP! CASTRO'S STUCK UNDER HERE!



I ALWAYS KNEW I WAS CUTE!



LET'S SEE, HOW MANY DEGREES OFF TODAY?

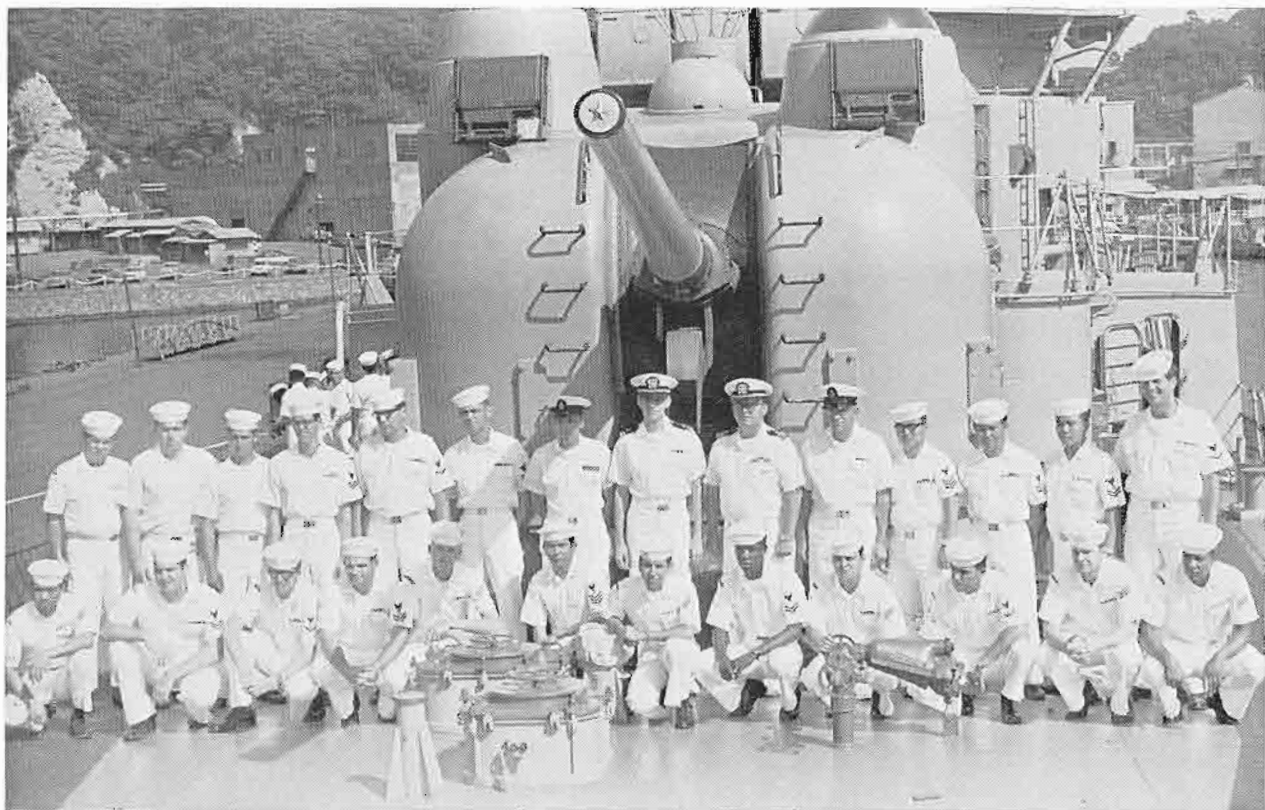


YES! I USED TO BE A BOY SCOUT! WHY?

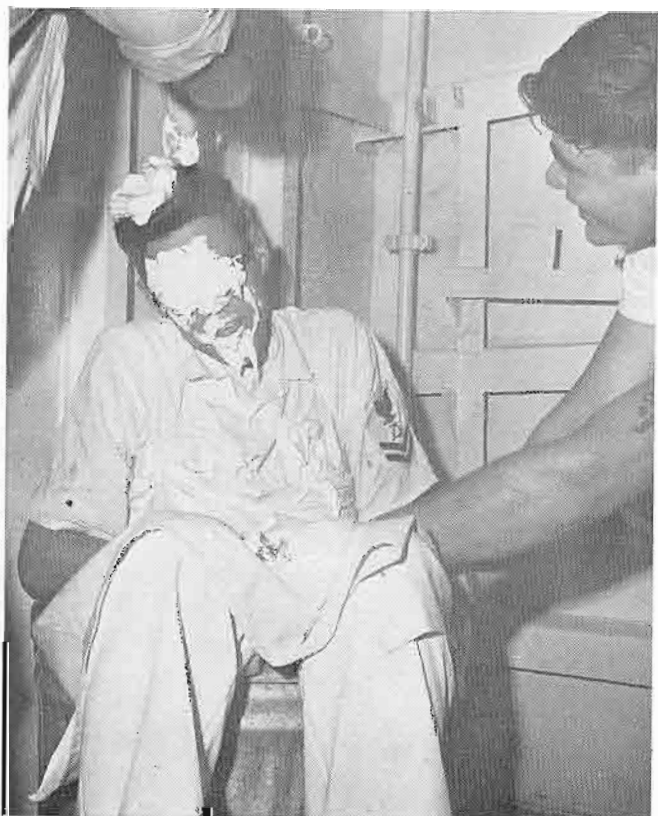
THIS IS WHAT WE CALL AN ON/OFF SWITCH. NE???



SUPPLY DIVISION



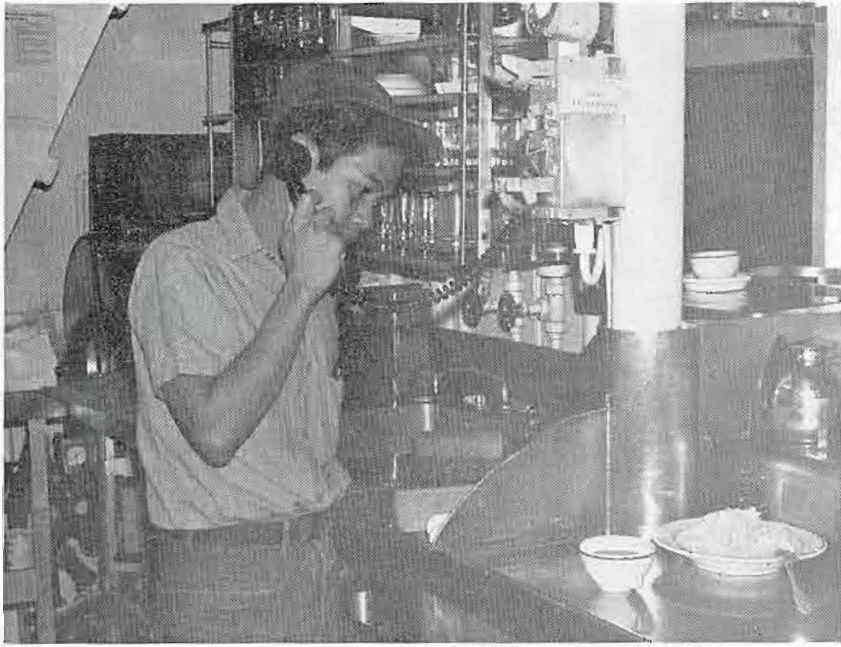
BACK ROW L-R: BUCHANAN CS2, NOLAN SN, KAUSTINEN SN, BROWN CS2, OWEN SK3, SILVERS CS1, KNOWLTON CSC, LTJG SINGLETON, LCDR COX, STURLAUGHSON SKCS BALZA DK1, RESOLME SD2, TUGADE SD2, TUGADE SD2, BENTLEY SK3.
FRONT ROW L-R: TACDA TN, BAILEY SK2, HOLMES SK3, SCROGGINS SK2, BLOXHAM SN, EMBUSCADO SD1, RIVERA SN, MCCLINTON SH2, KOHLMIER SN, JONAS SK3, MASLES SN, NICHOLSON SN.



HEY GUYS! ON THE CAKE, NOT ON TWIGGY!



WHAT'S THIS, 100 PACKAGES OF NYLONS?



YES SIR! PEANUT BUTTER AND JELLY!



IF I HATE IT, THEY'LL LOVE IT.

WHAT MAKES YOU THINK I'M NOT A STEWARD?



I LOOK LIKE BETTY WHO?



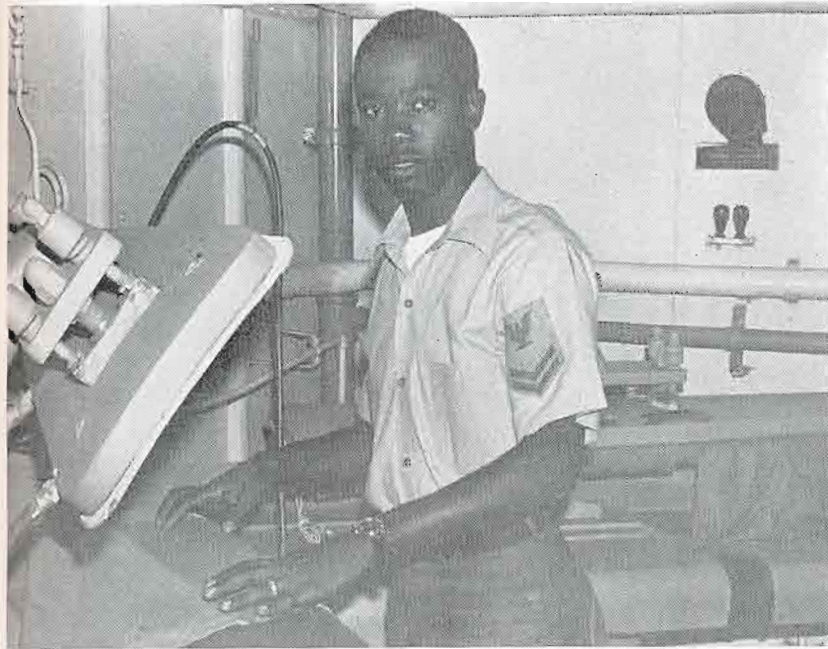


I KNOW HAIRCUTS ARE SUPPOSE TO BE FREE! BUT.....

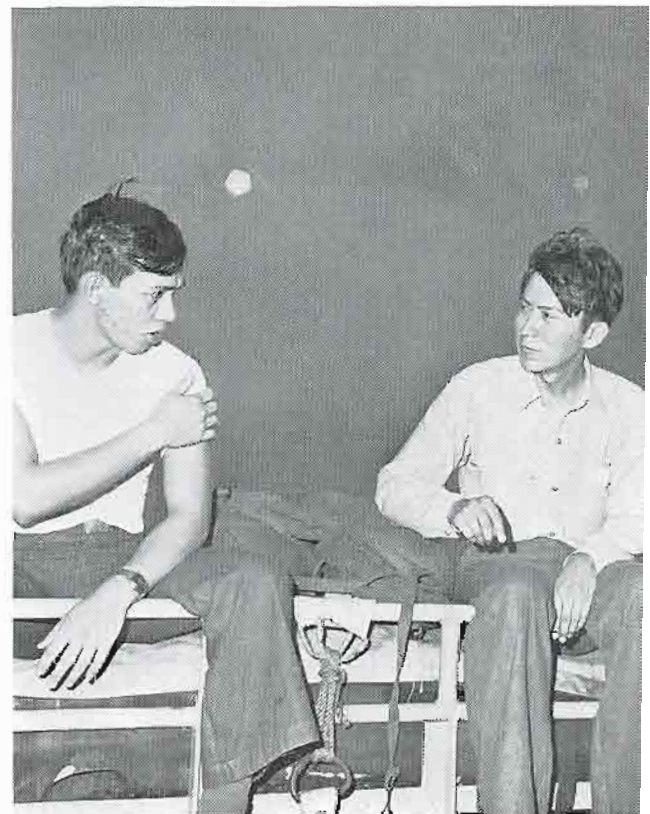
WHAT'S A CREASE?



DOC SURE IS WICKED WITH THAT NEEDLE!



HOW DO YOU CREASE A PAIR OF KNICKERS?





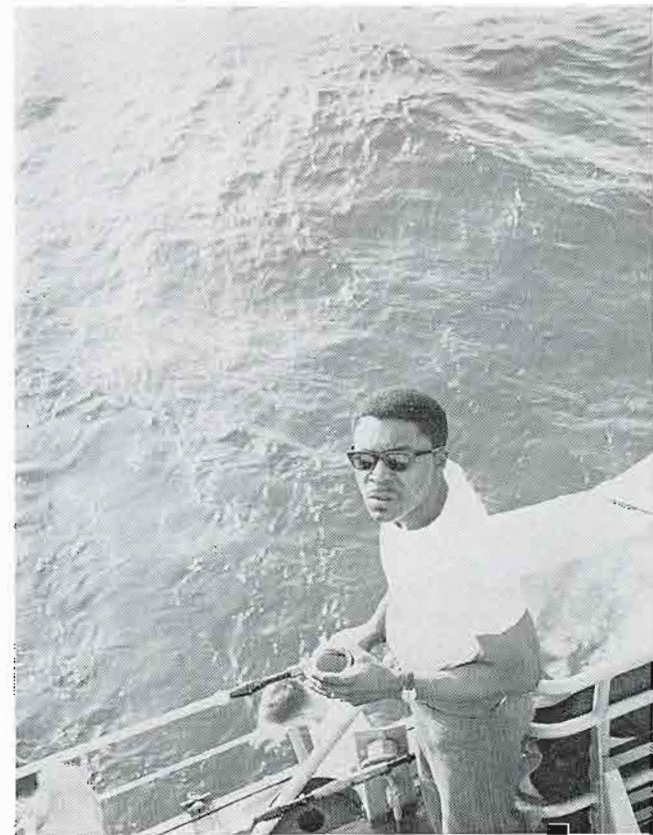
YOU HAD TO DO THAT, DIDN'T YOU!?

NO CHIEF, WE'RE OUT OF CLAIROL. WHY?



THAT'S MY KID SISTER 6'6"—245! NAYE?

WHO SAID ALL E-6 AND BELOW?

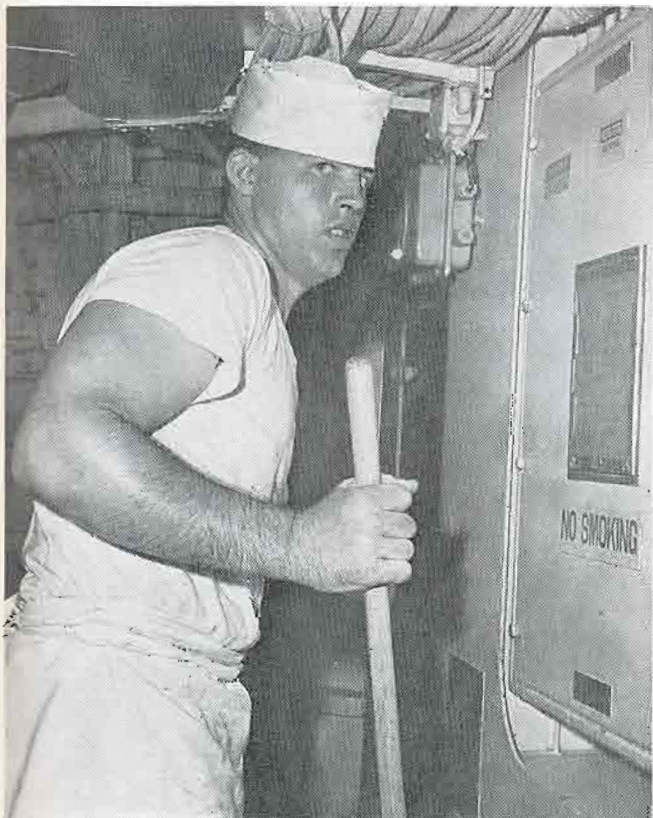


LET'S SEE; 15 OR 17 OUNCES IN A POUND?



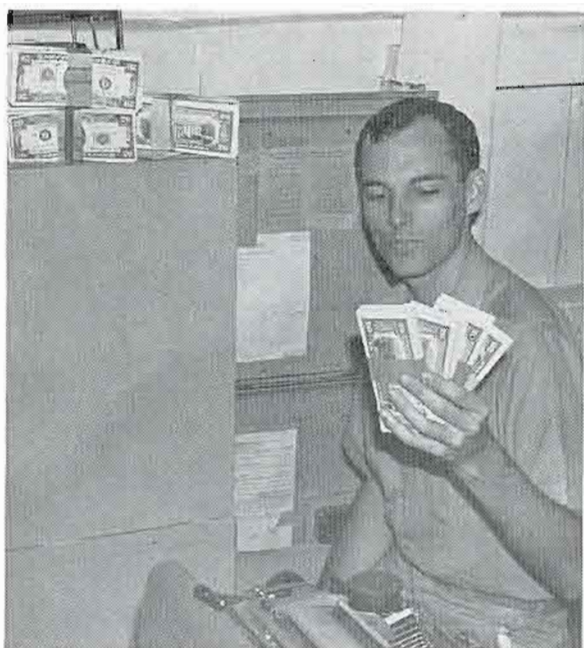
SOMEBODY PLEASE OPEN A PORTHOLE.

WHO SAID I LOOK LIKE A MAID?



YES! THE CHIEF SAID TEN DOZEN SPUDS!





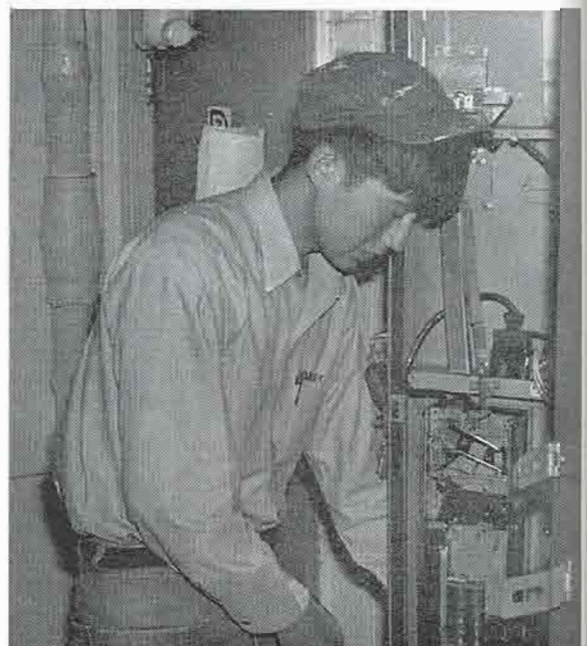
MMM... ISN'T ALL THIS MONEY BEAUTIFUL?

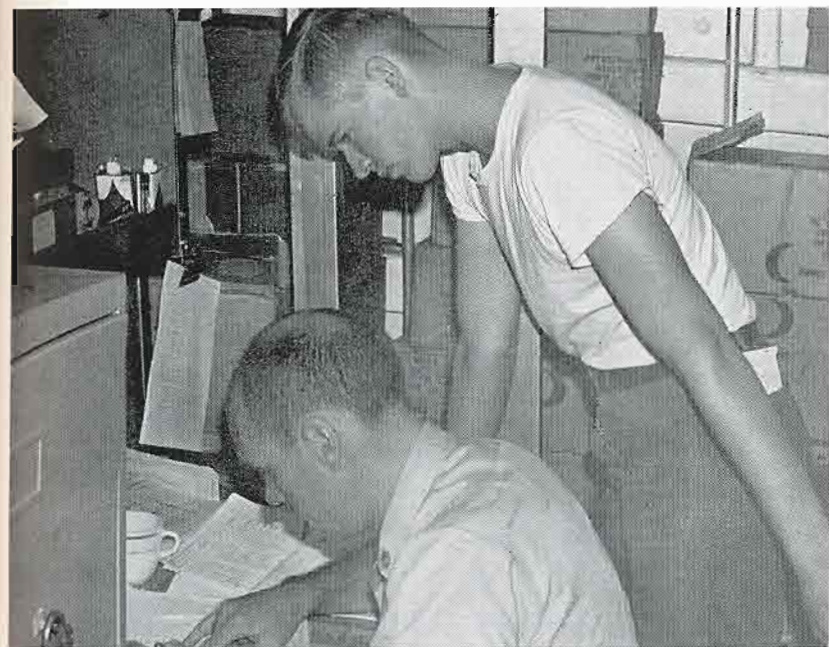


OH BOY! FRENCH SPAGHETTI AND ITALIAN BREAD!

WAIT TILL HE SEES HIS PAY THIS WEEK!?

YOU COULDN'T GET YOUR CHANGE BACK, AND I CAN'T GET MY FINGER BACK !!



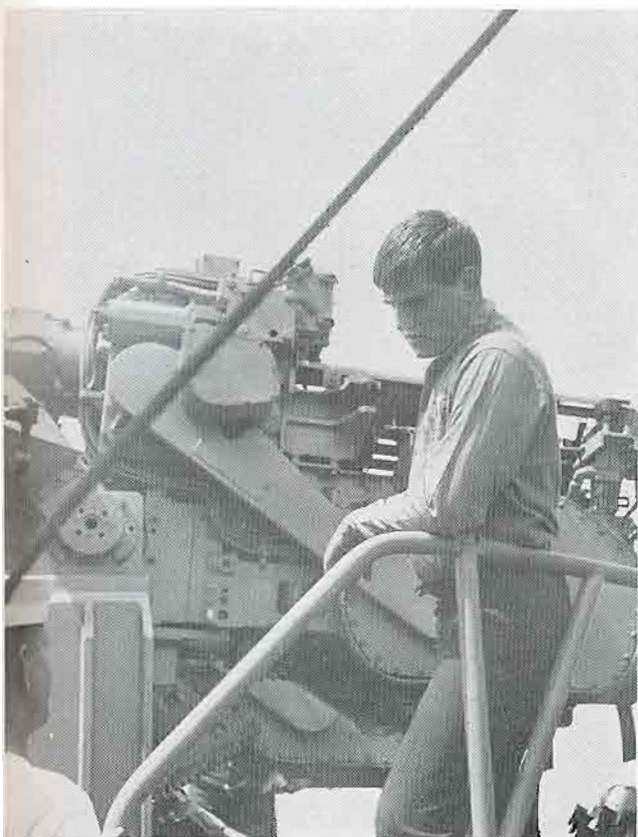


I SURE HOPE HE APPROVES MY EARLY LIBERTY!?



IF ONLY HIS WIFE COULD SEE HIM NOW

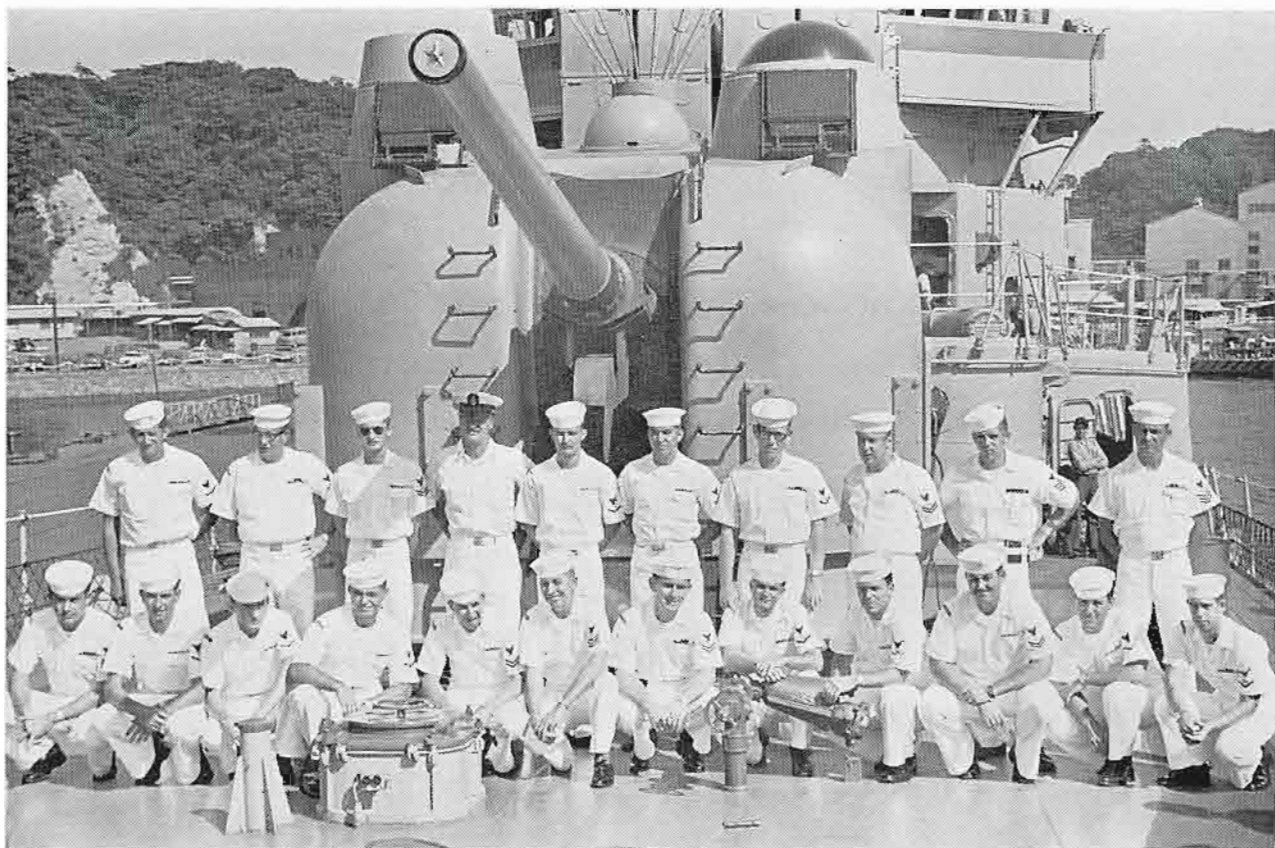
WELL...I USED TO BE A BARBER. WHY!?



WHO SAID BEING A COOK WAS SAFE?

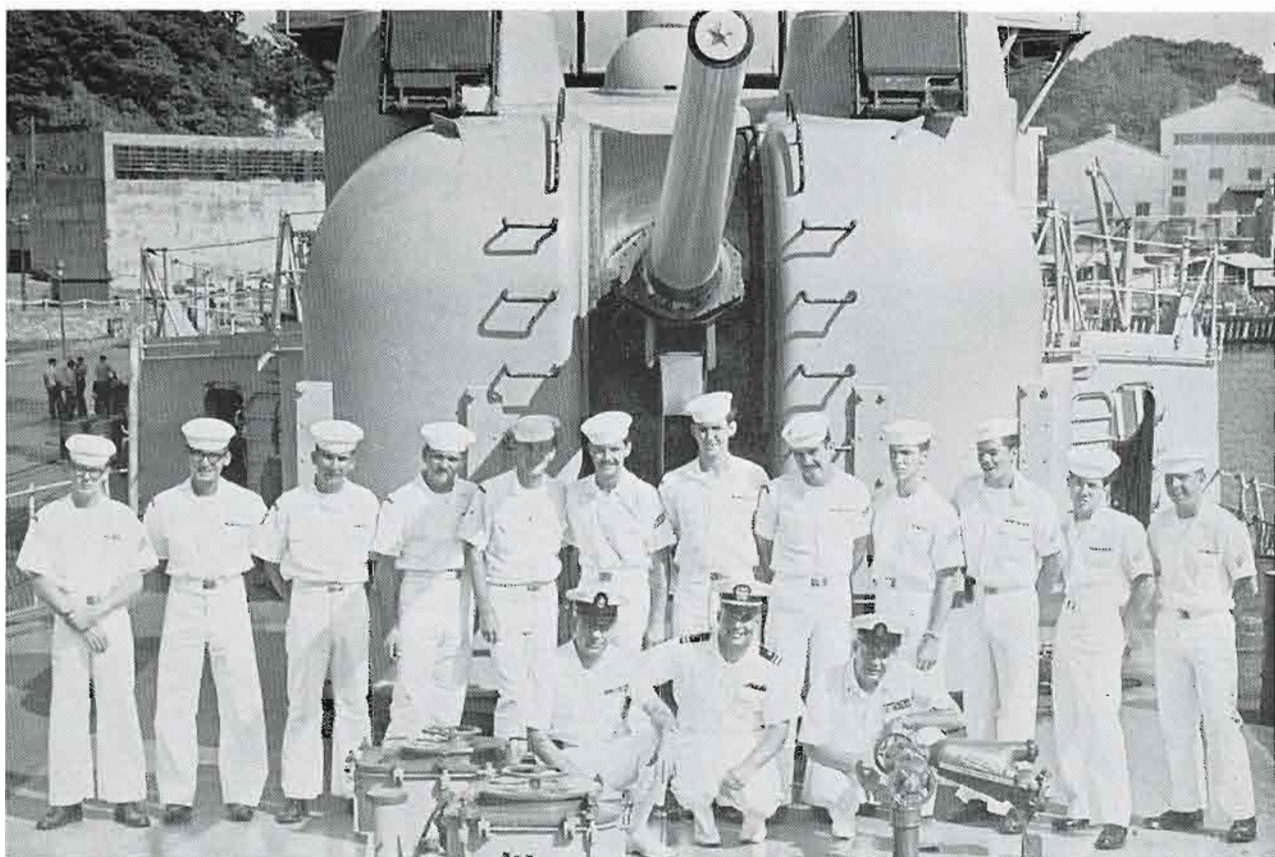


OI-DIVISION



BACK ROW L-R: LARSEN RD3, PLUMMER RD1, BISSELL RD2, ST CLAIR RDC, SUGARMAN RD3, PARRISH RD3, RATCLIFF RD3, JONES RD2, SCHMIDT RD1, JOHNSON RD1.

FRONT ROW L-R: DEXTER RD1, OHALLORAN RD3, BERNIER RD3, LAJR RD3, BRANUM RD2, ANGSTEAD RD1, ROSE RD2, HAMER RD3, FINCH RD3, FOSTER RD2, REECE RD3, CRUMB RD3.



BACK ROW L-R: ATTREAU RD3, KAROLYI RDSN, LYONS RD3, SHIELDS RDSN, RODIER RD3, MORRISON RDSN, WOODS RDSN.

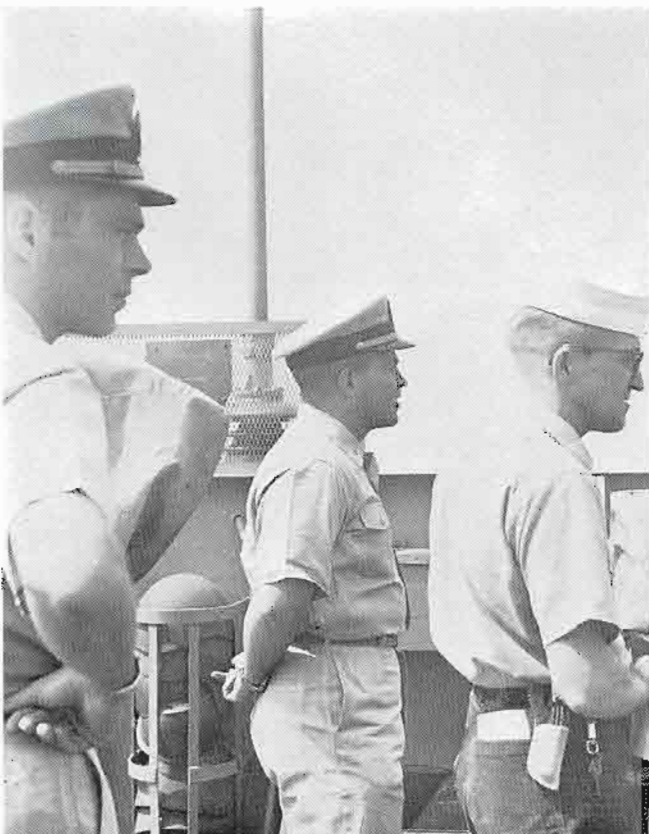
FRONT ROW L-R: ROBINSON RDC, LTJG FRANK, VOLK RDCS.



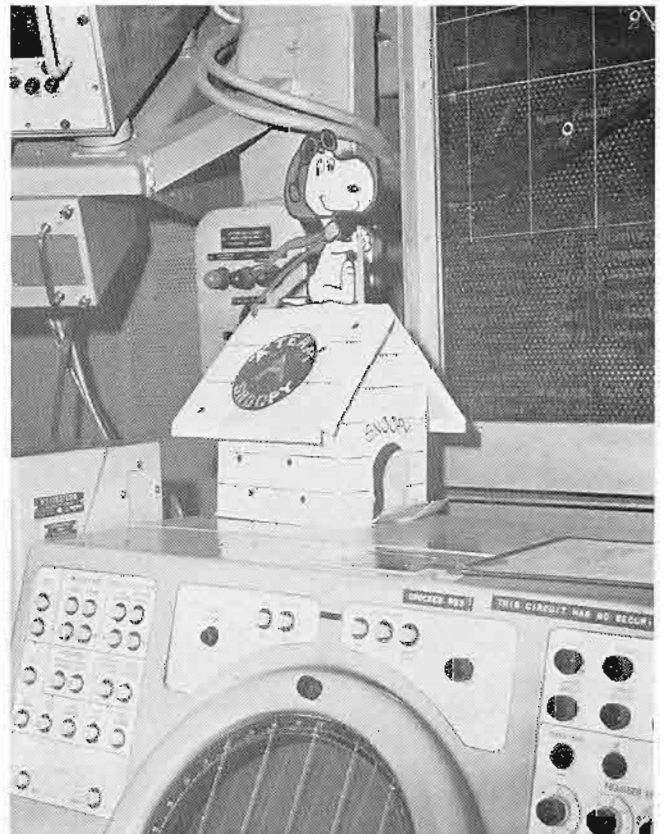
WHAT'S GUTH DOING SLEEPING UP THERE?



JUST THINK; TOMORROW I'LL BE A RDBMSN!!



YES, I DO THINK I SMELL OLONGAPO.

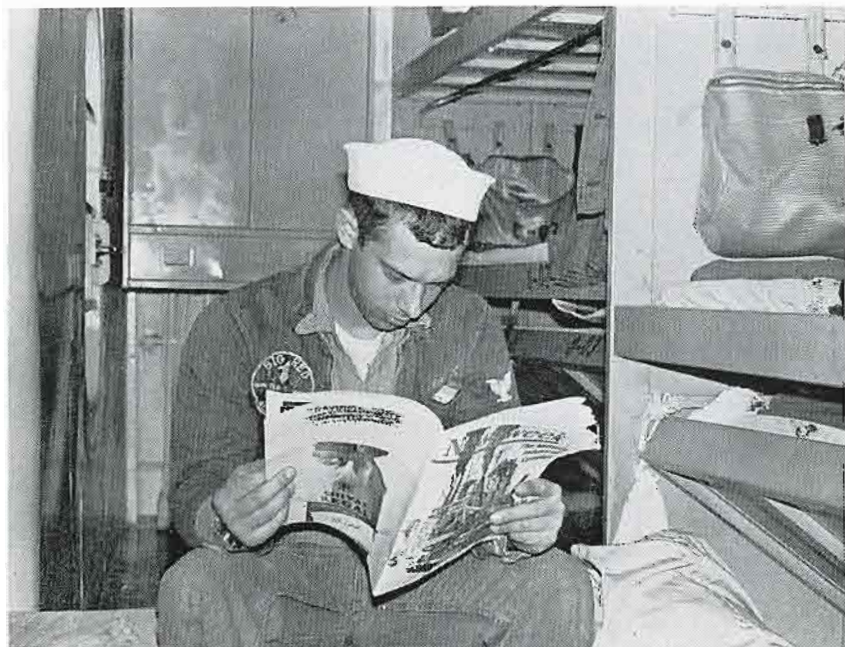


WHEW! BAD INTERCEPT



"SO THEN I SHOT THREE TIMES.....

WERE THE GOOD GUYS.

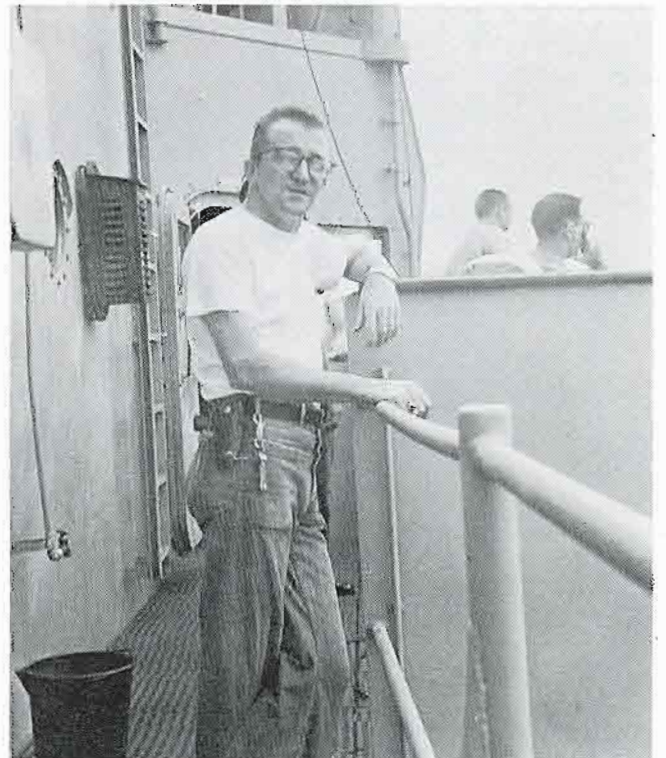


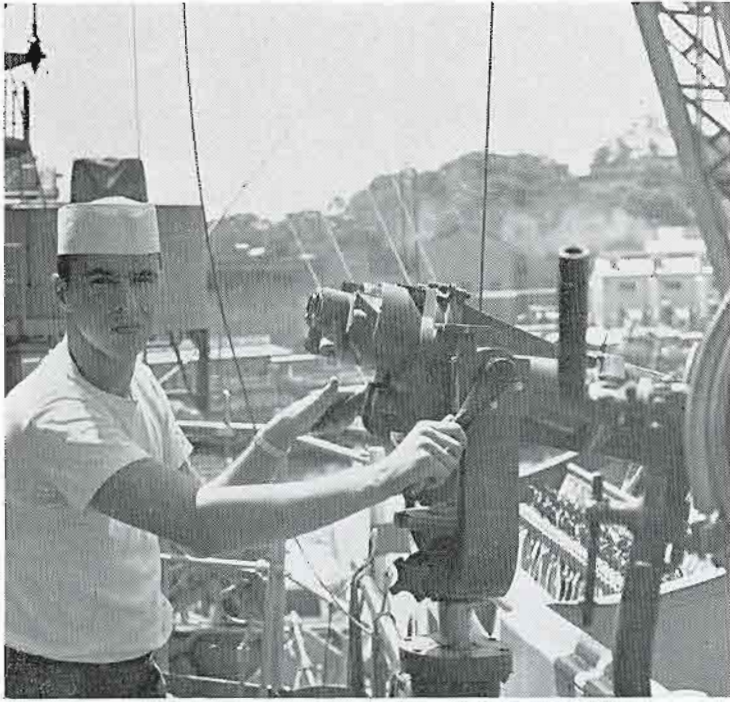
I NEED FORTY



MR MCBRIDE IS SENDING WHO TO THE
FIREROOM???

WHEN I GROW UP I WANT TO BE A LAGGER.





NO! I'M NOT WATCHING TWIGGY!



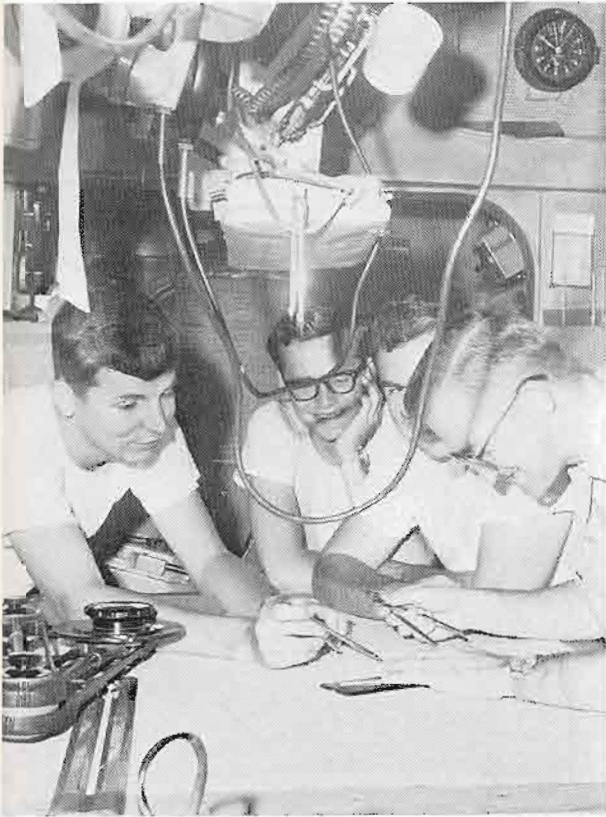
WHERE'S GEORGE?

WE HAVE TO FIND SOMETHING TO DO TODAY.



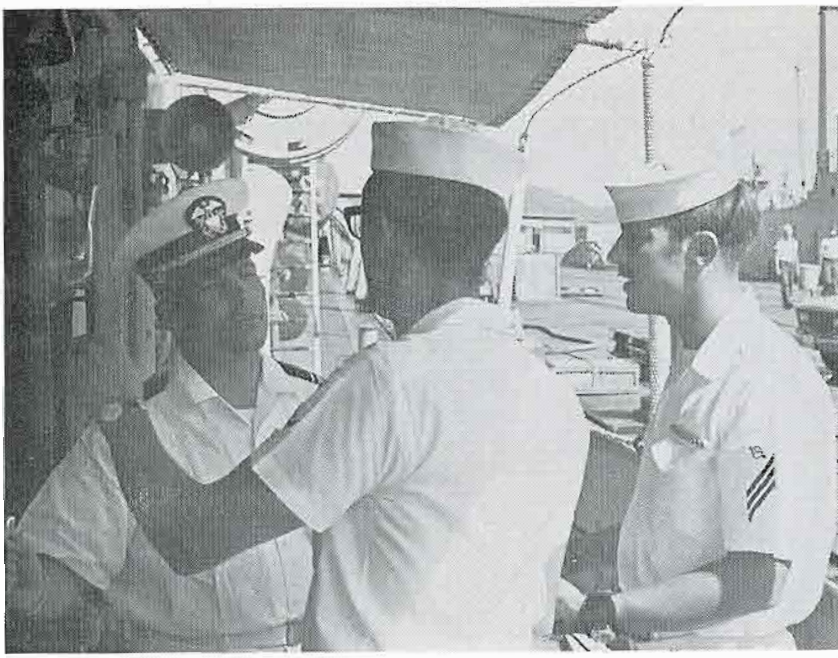
THEY DON'T MAKE WHEATIES THE WAY THEY USED TO!





THE RADAR GANG AT WORK AND LEISURE.





HOW WOULD YOU KNOW JONES?
YOUR'E ONLY A GUNNERS MATE.

GUTH'S ALWAYS JOKING; WOODY'S
ALWAYS SLEEPING.



NO, SNAKE! NOT TWO HOSES! PEACE



JUST 15 MORE MINUTES AND IT'S THE FLEET LANES!



YEA, I'M SHORT! BUT I'M NOT GETTING SOFT EITHER.

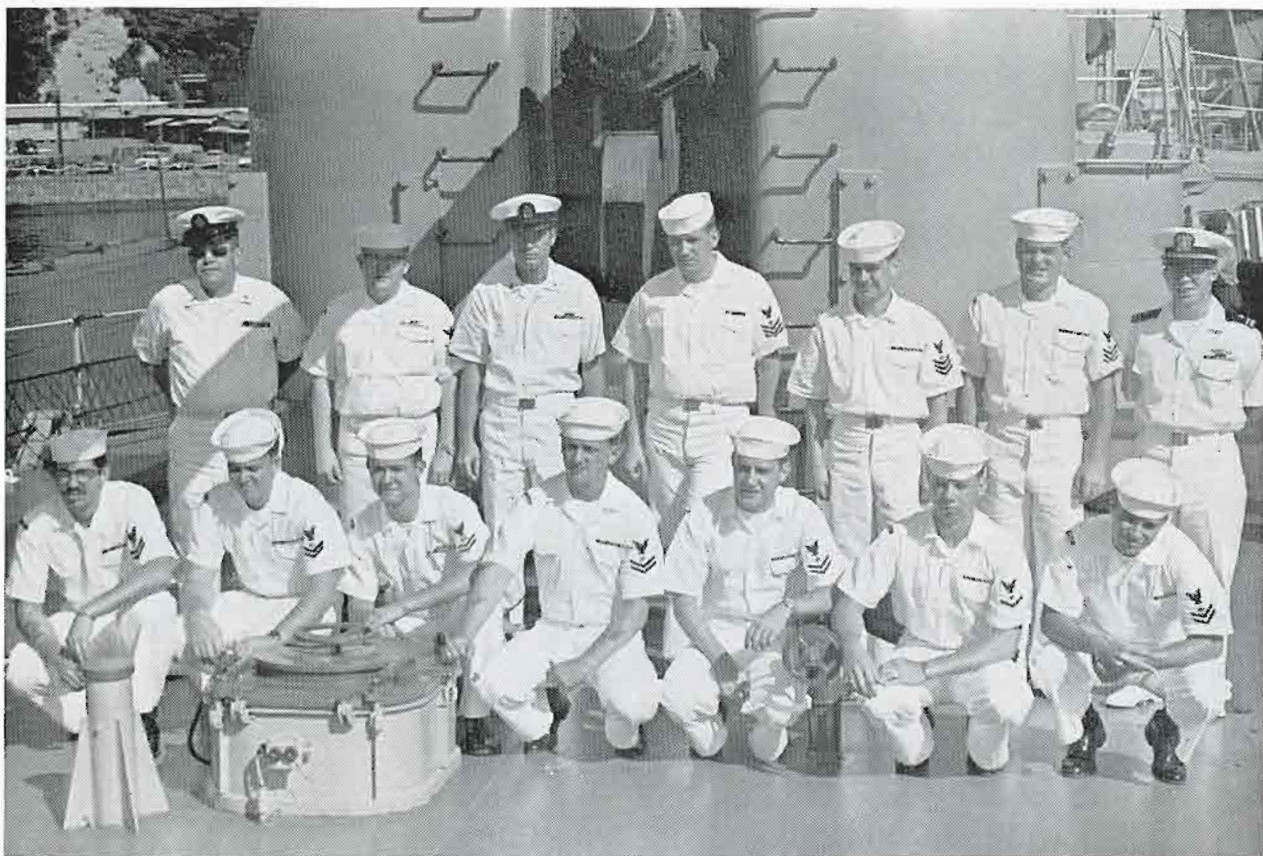


I'D RATHER BE A SCOPEDOPE THAN A BETTY CROCKER!



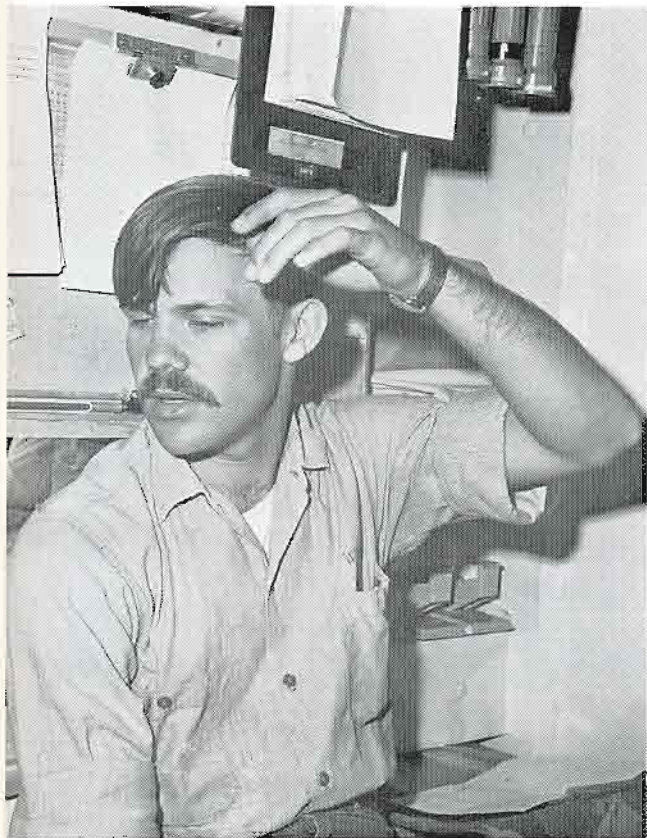
IT'S SLEDGE! NOT SLUDGE.

OE-DIVISION



BACK ROW L-R: LOLWING DSCS, MOE DS1, COKER ETC, AUGNST DS1, SHEEHEN DS1, BETTGER DS1, LTJG MEASLE.

FRONT ROW L-R: HEILI ETR2, SCHREIBER DS2, GERDES ETR2, DOTY ETR2, EVANS ETN2, WHITLEY ETR3, SILVERMAN DS2.



WHAT'S A HAIRCUT??



IT'S A ROUGH LIFE.

I KNEW YOU SHOULDN'T HAVE GONE OVER
LAST NIGHT.





LOOK DIXON, DON'T JUST STAND THERE AND STARE, SWEEP!



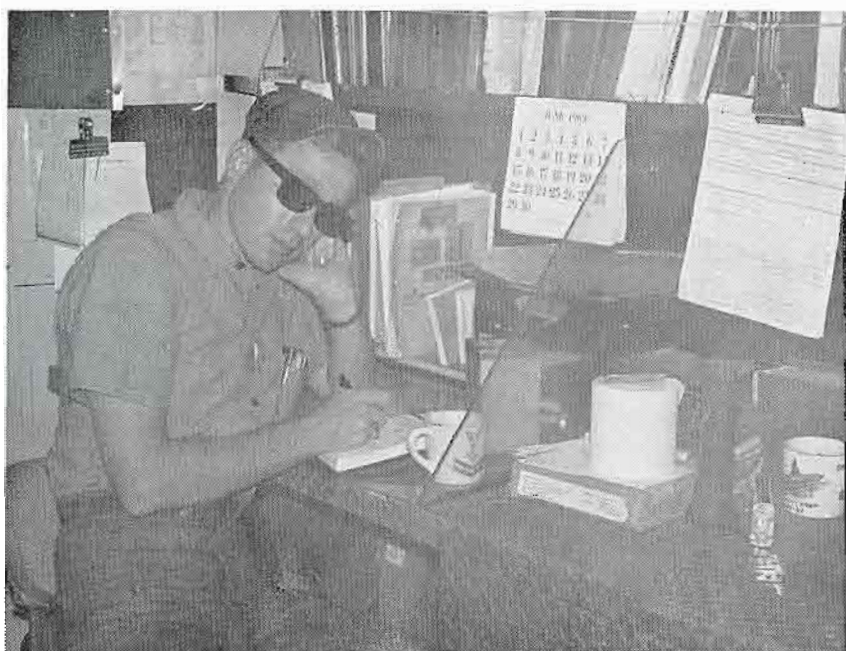
HE'LL MAKE AN OUTSTANDING JANITOR.

YOU HAD TO TELL THE CHIEF I WAS HERE, DIDN'T YOU?

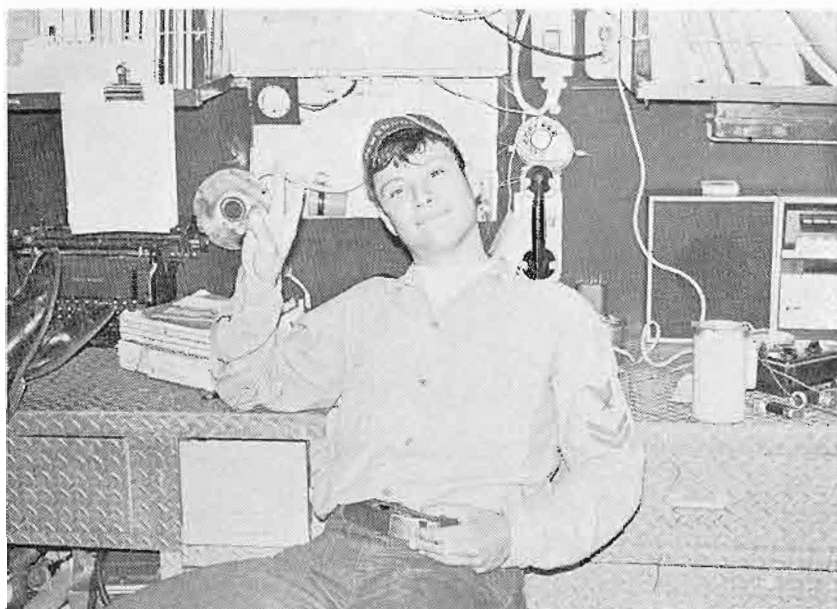


DO YOU HAVE TO CHASE ME WITH THAT RIDICULOUS CAMERA?





ANOTHER HARD DAY IN THE NTDS
WORKSHOP



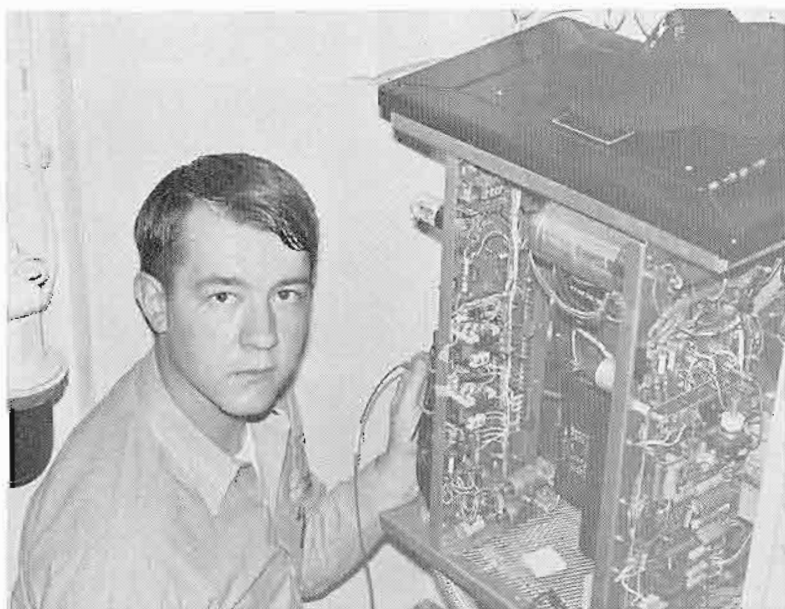


WHAT MAKES YOU THINK WE'RE SMART CHIEF?

HOW ABOUT WAITING FOR ME TO POSE?

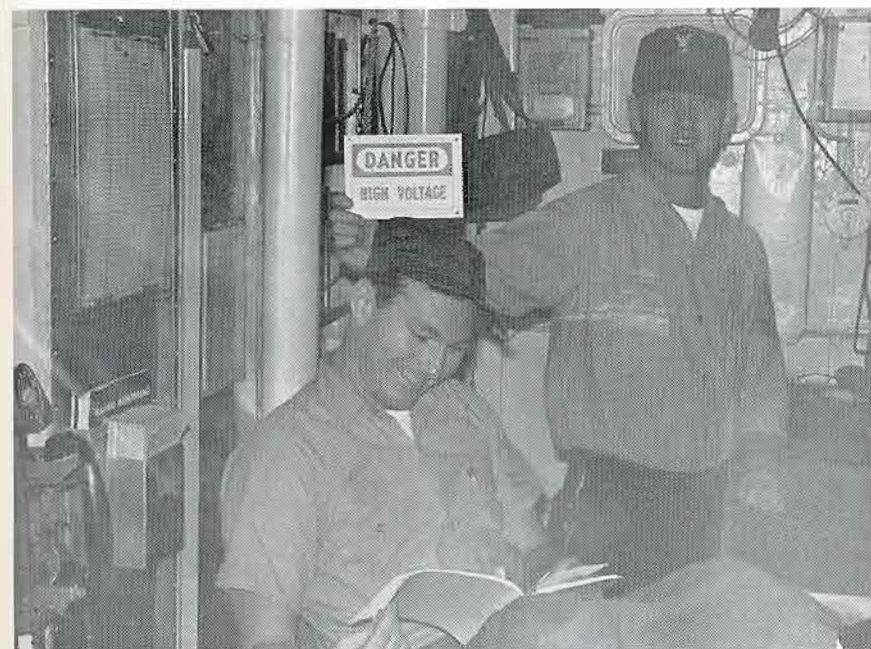


NO, I'M NOT OLD, THIS IS FROM TALKING TO CRUMB.

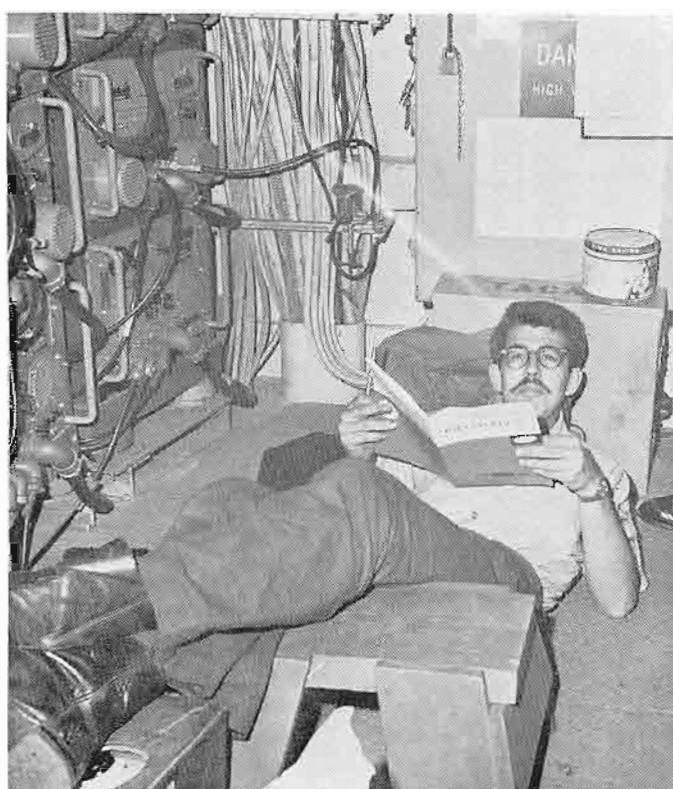


WHAT'S THE DIFFERENCE BETWEEN AC AND DC?



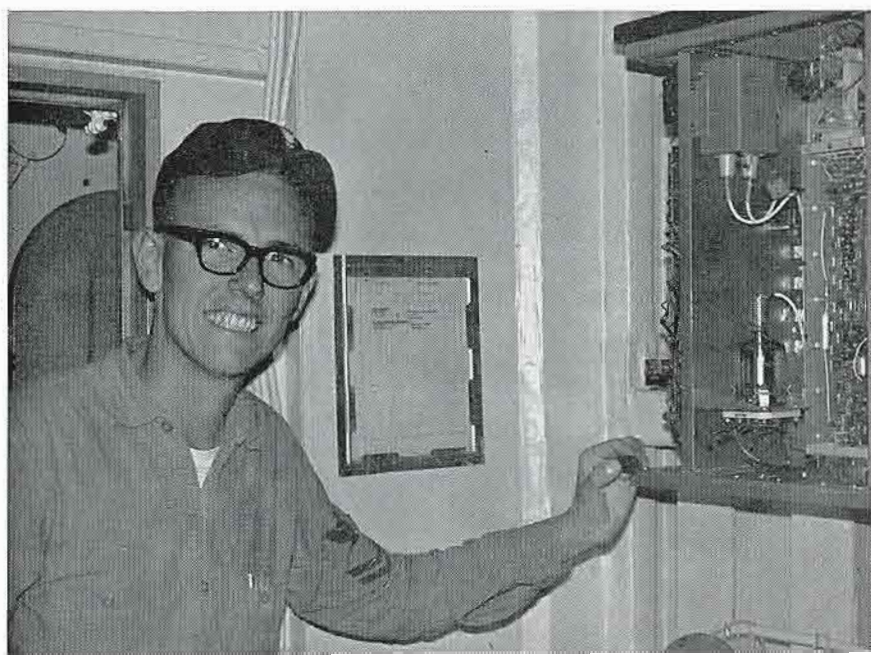


HE CAN'T BE THINKING THAT MUCH.

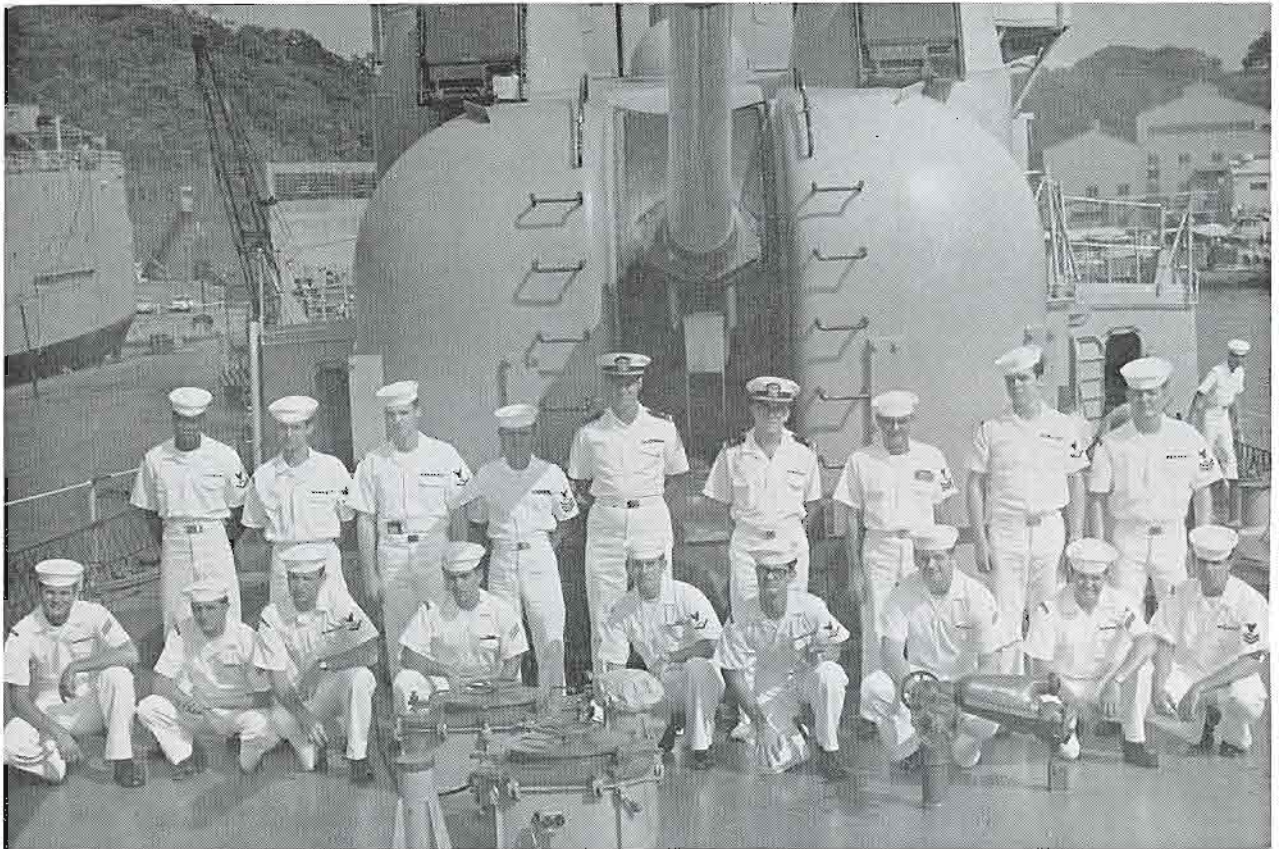


HI CHIEF! WHAT DO YA NEED?

IT'S MONDAY MORNING AND HE'S GOTTA SMILE!

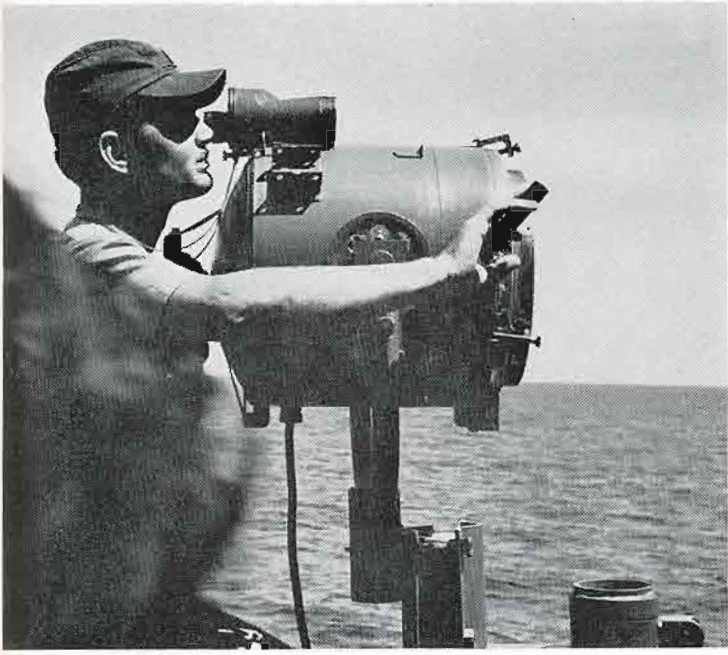


OC-DIVISION



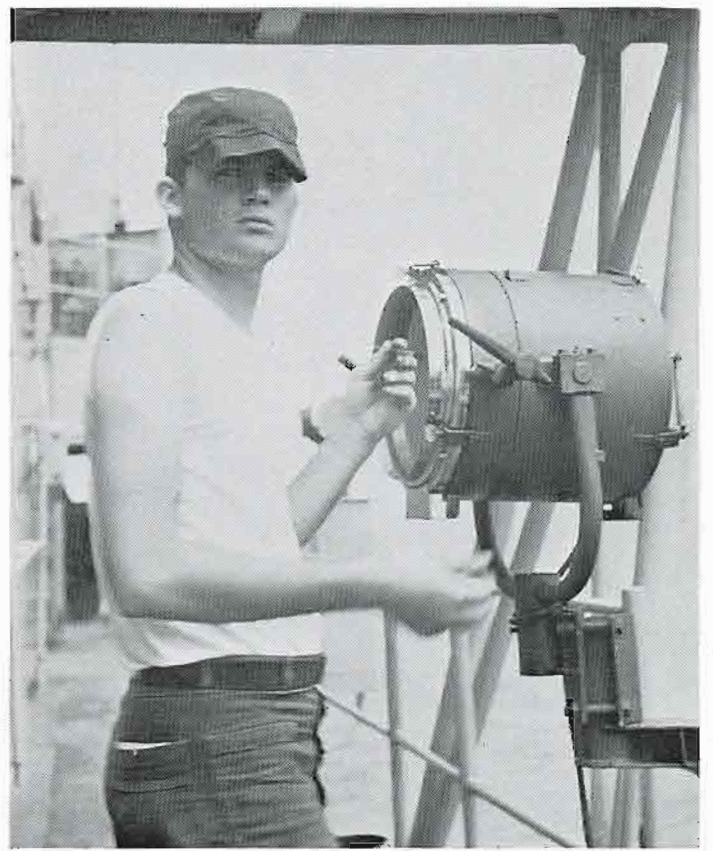
BACK ROW L-R: RAMZY SM3, SEWARD RM3, FODOR RM3, SNIDER SM1, LTJG BERGEN.
LTJG NELSON, HARRIS RM1, WINTERS RM3, RICE RM2.
FRONT ROW L-R: STELL SMSN, HAGOOD, SMSN, TRAVIS RM3, LOPES SN, HULSEY
RM3, GRODEK RM3, VINEYARD CYNSA, KLINGLER RMSN, STAGGS RM2.





BUDDIES TO THE END.

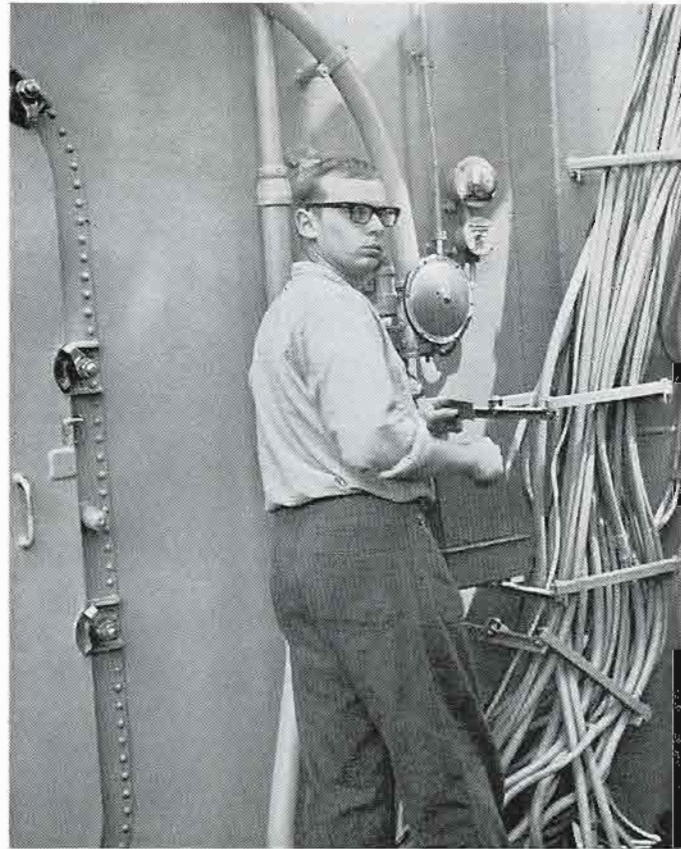
OF COURSE I KNOW WHAT I'M DOING.



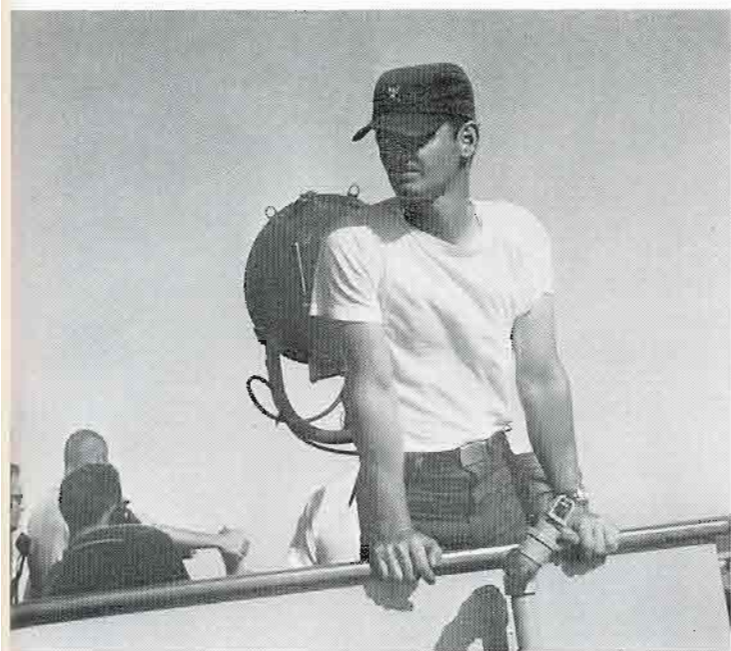


DID I TELL YOU TO KNOCK OFF?

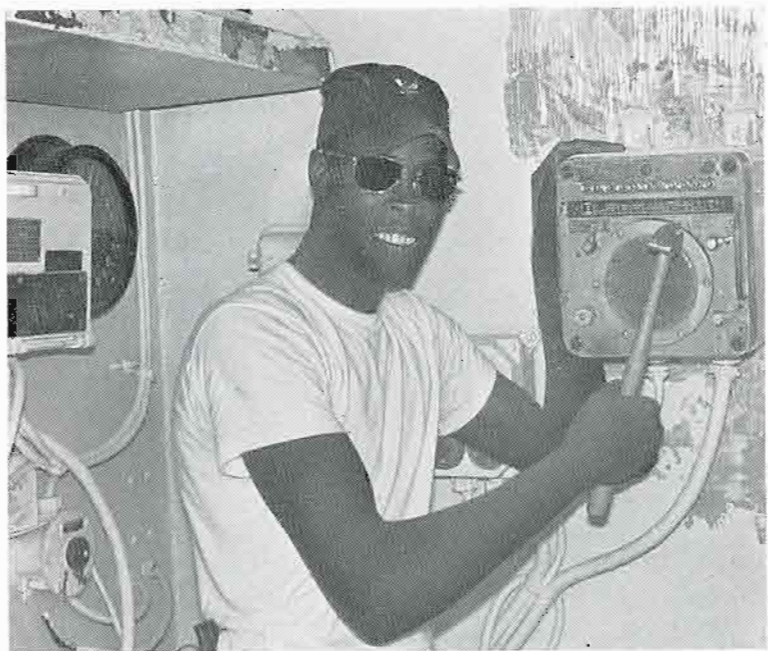
HEAD BRIGHTWORK POLISHER.



WE JUST SHIPPED OVER.



I THINK I SEE A MAIL BUOY!



THIS SHOULD FIX IT.

HOW DO I SPELL IT?



SURE I WORK HARD.





WHO IS A JAPANESE STRIKER?



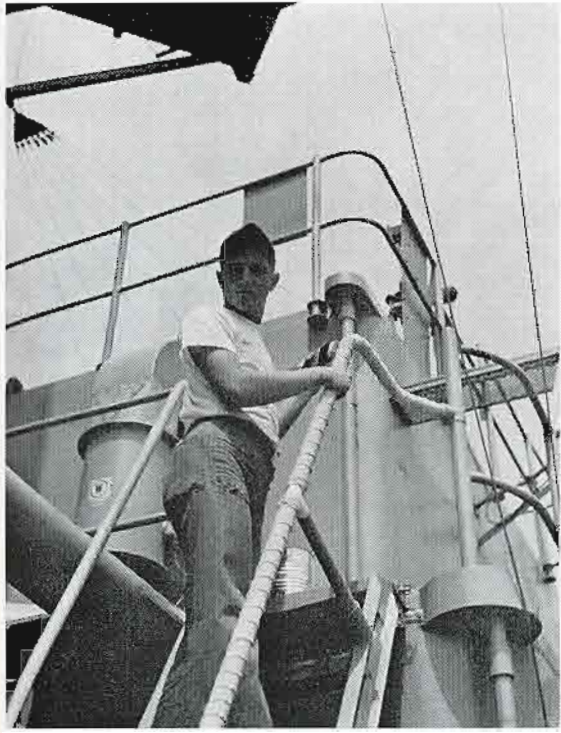
OF COURSE THIS SPACE IS CLEAN.

THE LATEST ISSUE OF PLAYBOY?

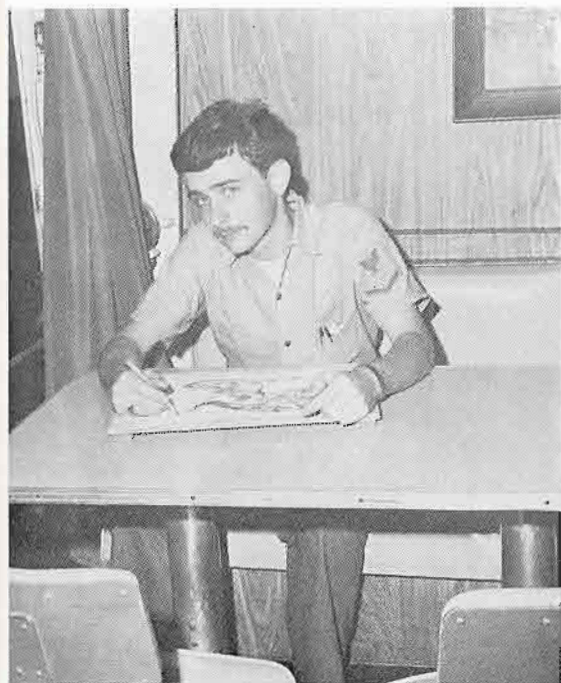


NO, WE'RE JUST LOOKING AT THE PICTURES.



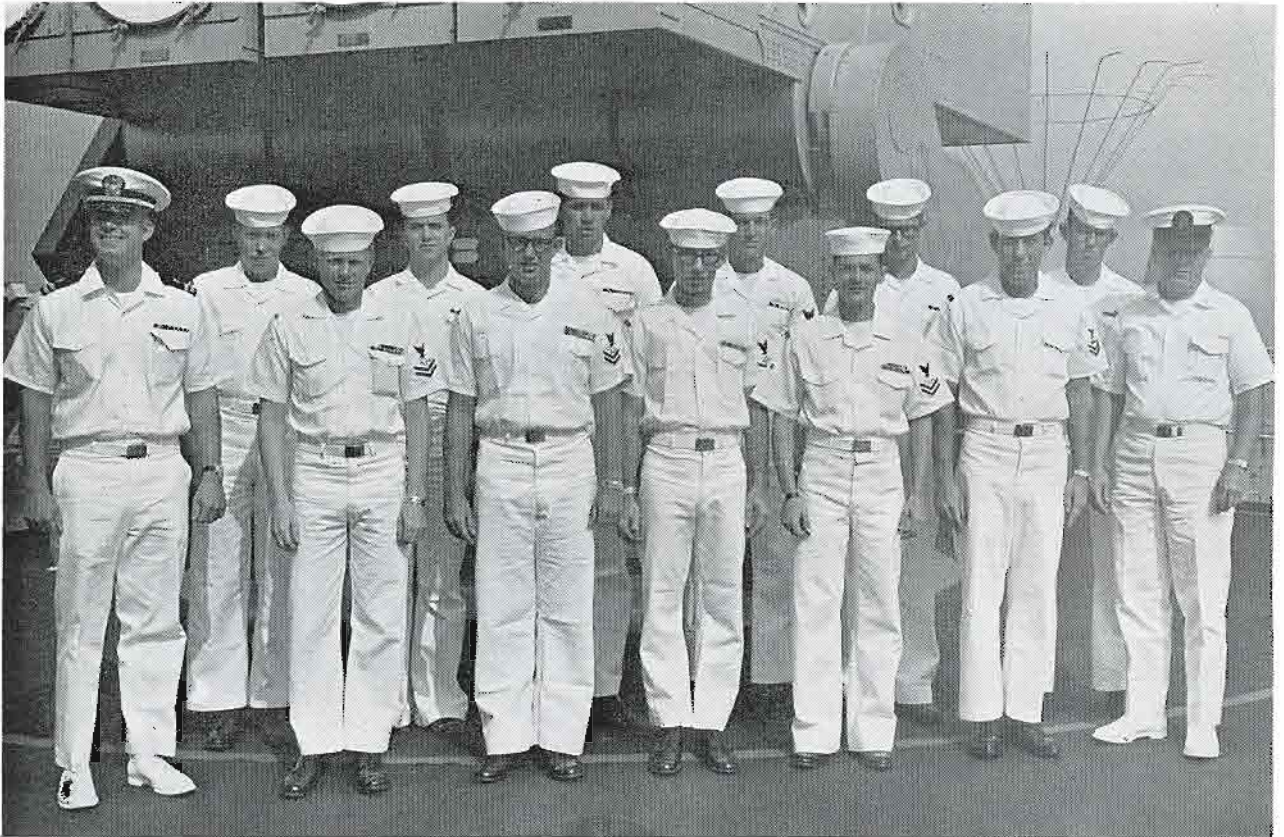


THE ORIGINAL PIRATE



. . . . AND CREATOR.

WA-DIVISION



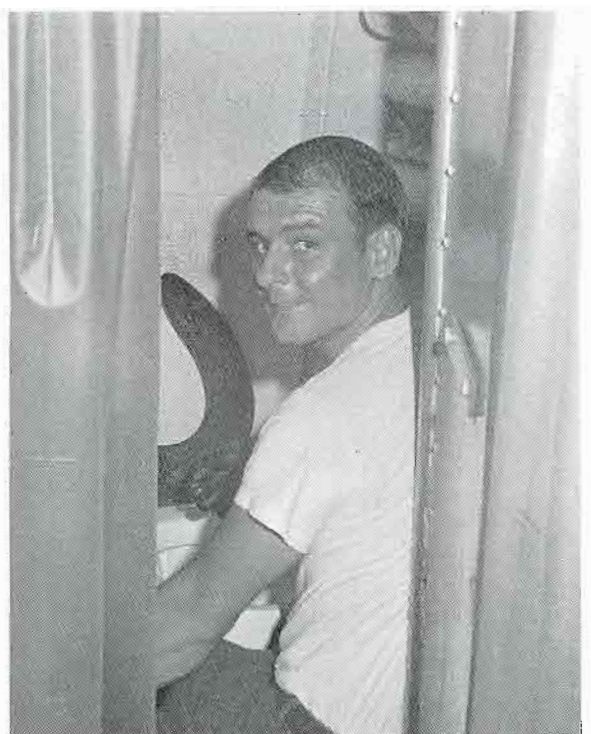
BACK ROW L-R: WHITE STG3, HELMS STG3, ELLEY GMG3, MCCARRELL GMG3, NEUHAUS TM3, WALTON GMG3.
FRONT ROW L-R: LT MCBRIDE, NELSON STG2, HUCKELBERRY STG2, LEUKHARDT STG3, WILSON STG2, SMITH TM2, MACDONALD STC.





ALRIGHT, NICHOLS GREASE THE LAUNCHER.

WHERE'S RALPH?



COME RIGHT TO 432 DEGREES.



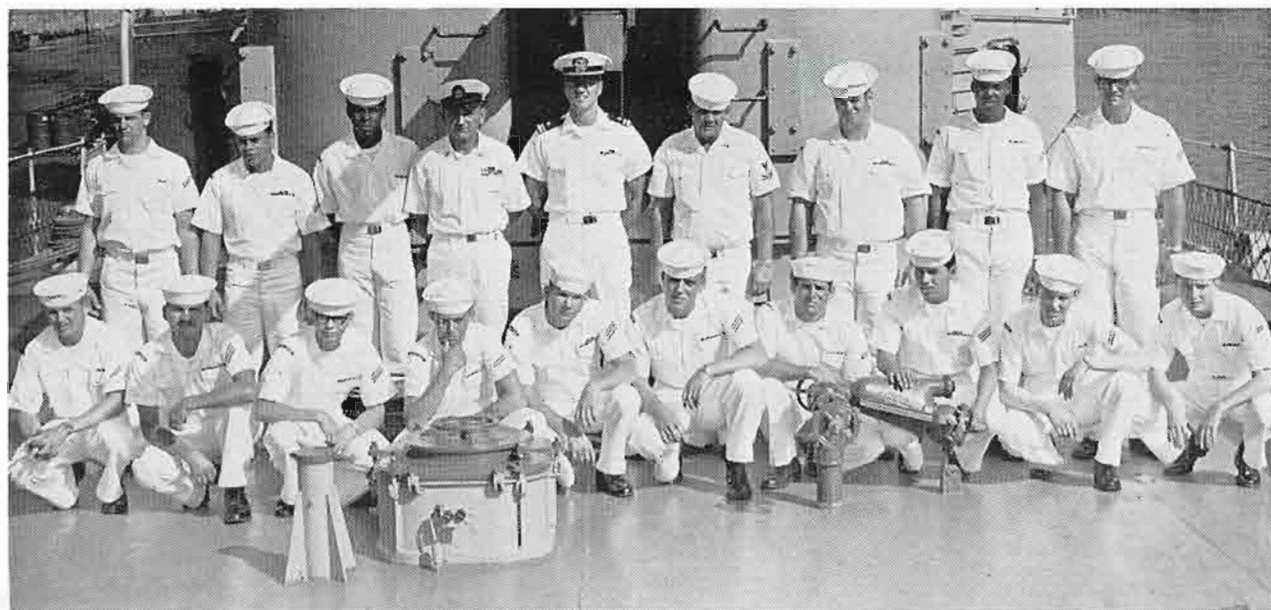


I'M GOING TO CATCH THEM GOOFING OFF THIS TIME.



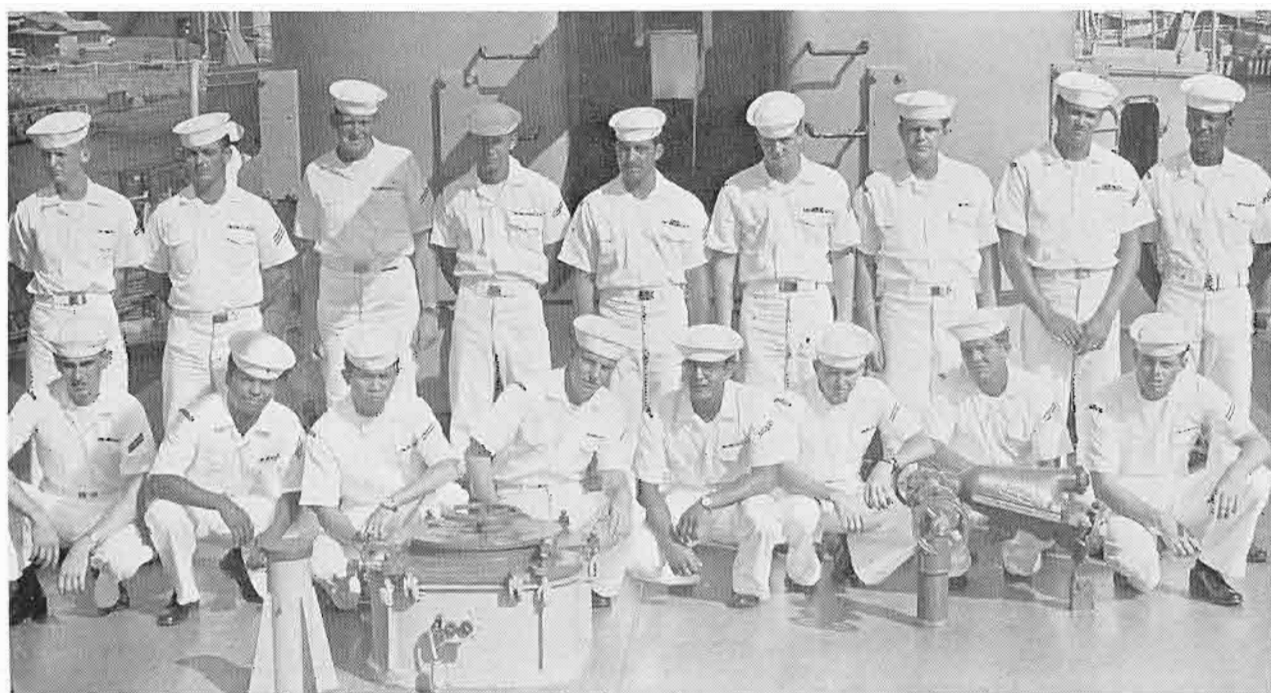
COME ON OUT OF THE WATER, ELLEY.

WG-DIVISION



BACK ROW L-R: MCKEANS SA, KAMAKELE SN, COLLIER SA, NIEMIERA BMC, LTJG WILLIAMS, MC NABOE BM2, DIXON SN, WHITESIDES SN, LEWIS SN.
FRONT ROW L-R: DEIBERT SA, ESPINOSA SN, VOGT SN, CASE SN, SMUTEK SN, GOEHRINGER SN, PORTERA SA, ESPINOSA SN, NORRIS SA, GILMAN SA.

BACK ROW L-R: GLEICHNER SA, DENSMORE SN, BLOCK SA, HANSON SA, COTTA SN, BAINBRIDGE SN, WATERS SA, BARBER SN, LUCY SA.
FRONT ROW L-R: ROTHMAN SN, GREEN SN, REYES SA, MENARD SA, LEBLANC SN, SMALL SA, NIGHTENGALE SA, WILEY SA.





HEAD DECK APE



AN ALERT BRIDGE WATCH?!

OF COURSE WE'RE WORKING HARD.



THEY'LL FLIP WHEN THEY SEE THE COLOR OF THIS PAINT.





ON THE COUNT OF 3, OVER THE SIDE.

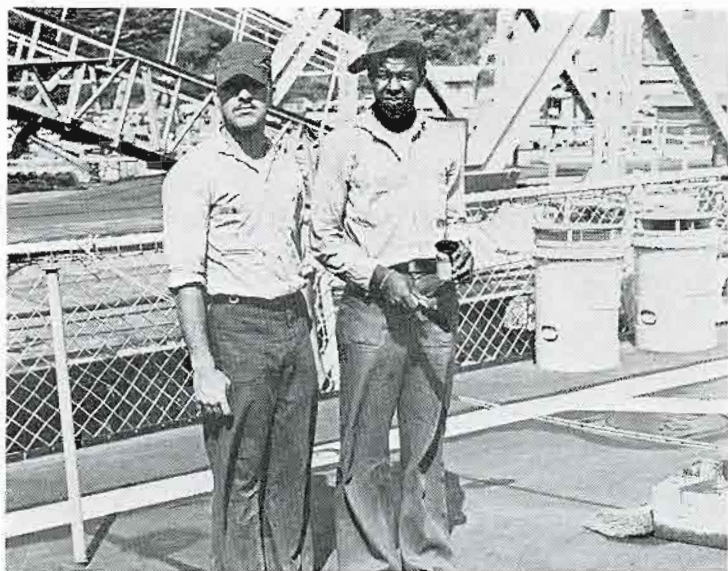


SURE I'M HAPPY. I LIKE TO PAINT.





YOU TELL HIM COTTONTOP.



US BOSUNS ARE THE BEST.





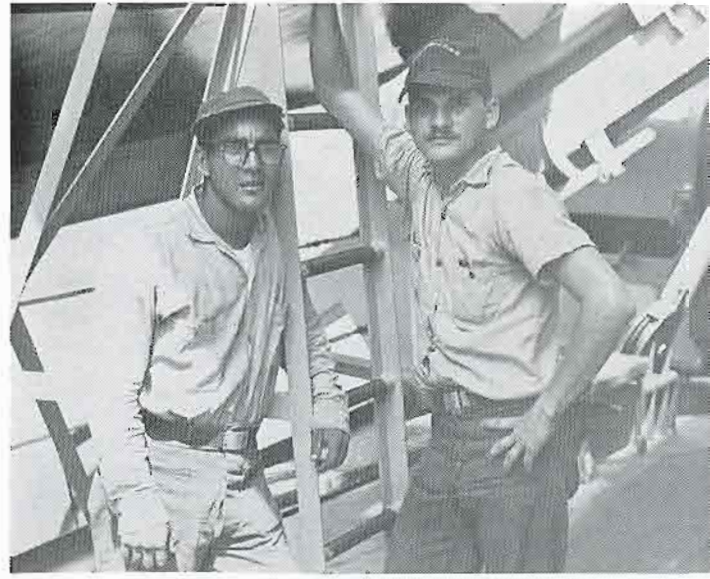
NO! THIS AIN'T PAINT, IT'S MOONSHINE.

SHIP'S SEAMSTRESS



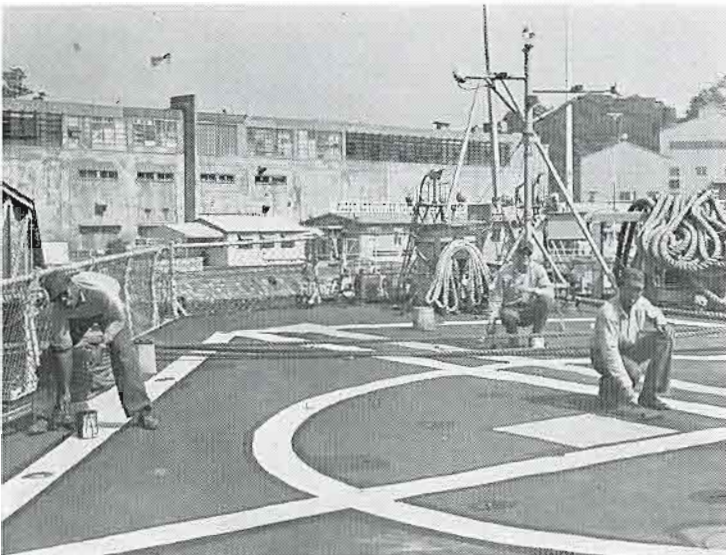
ONE MORE SINK AND I CAN GO ASHORE





"CHICANO POWER."

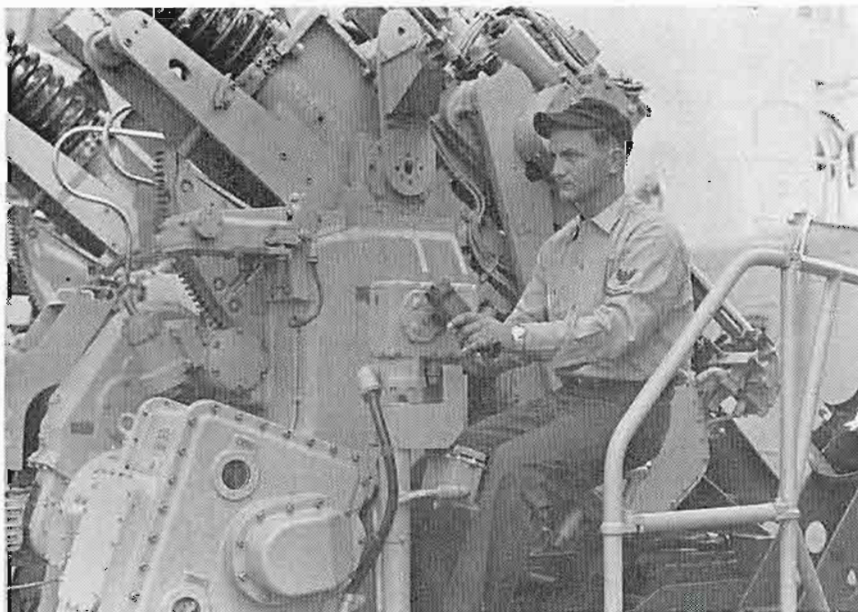
WHATTA YA MEAN SOMEONE FELT
OVER THE SIDE. ?



WD-DIVISION

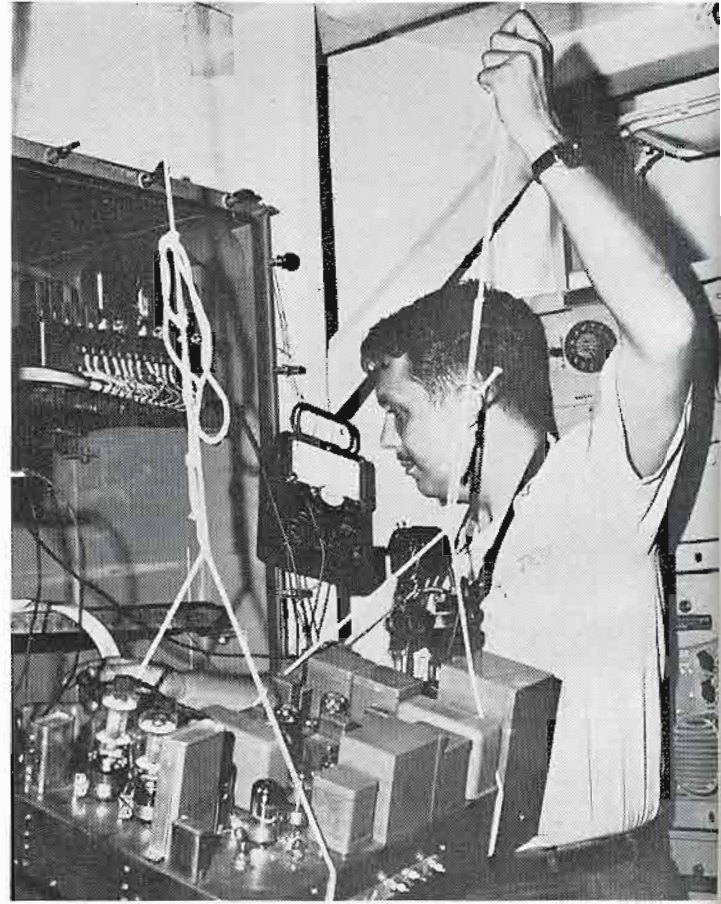


BACK ROW L-R: MASON GMG3, JONES GMG3, MOORE GMG2, LTJG COOPER, UPDYKE GMG1, KOPF FTG2, THOMAS FTG.
FRONT ROW L-R: KRUEGER FTG3, EDEL FTG2, WALTERS GMG2, MCQUIRE GMG2, TEGAL FTG2.



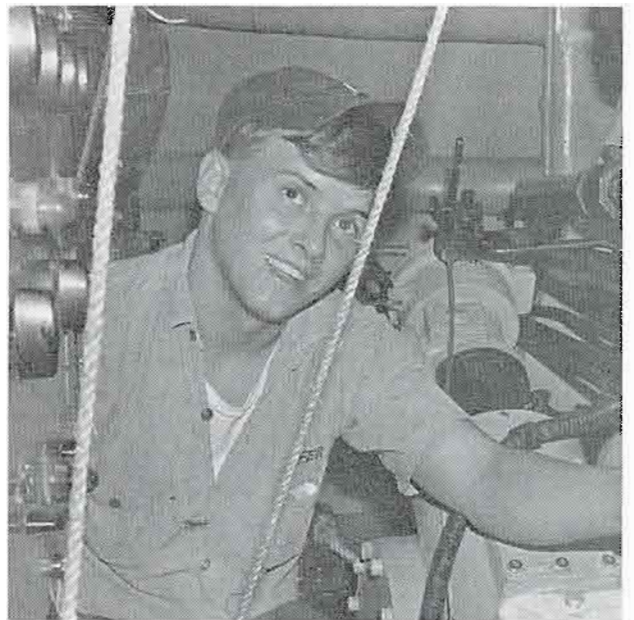


JURY RIG?

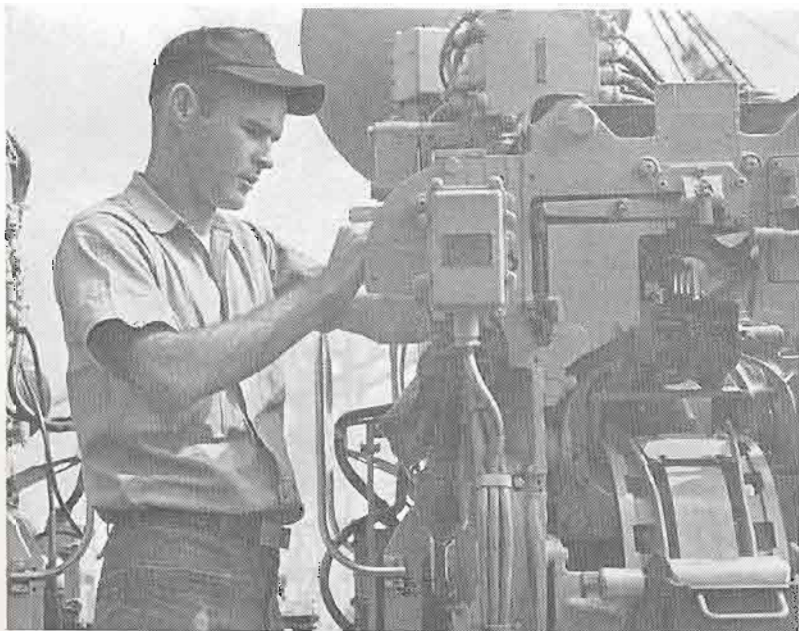




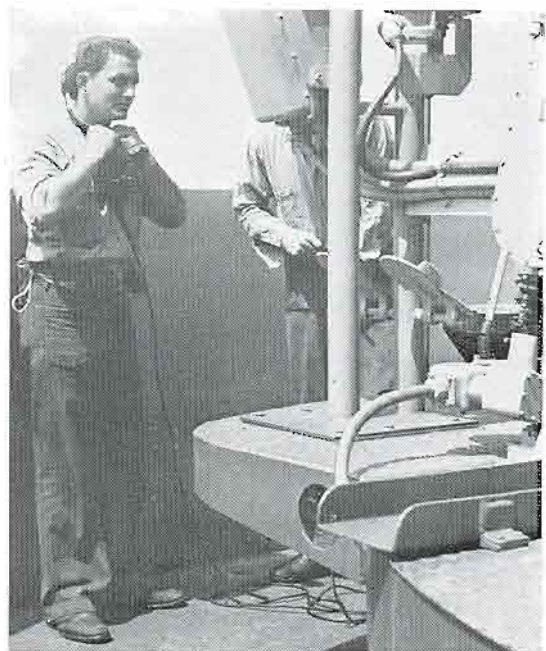
WHAT DO YOU MEAN, IT'S JAMMED?



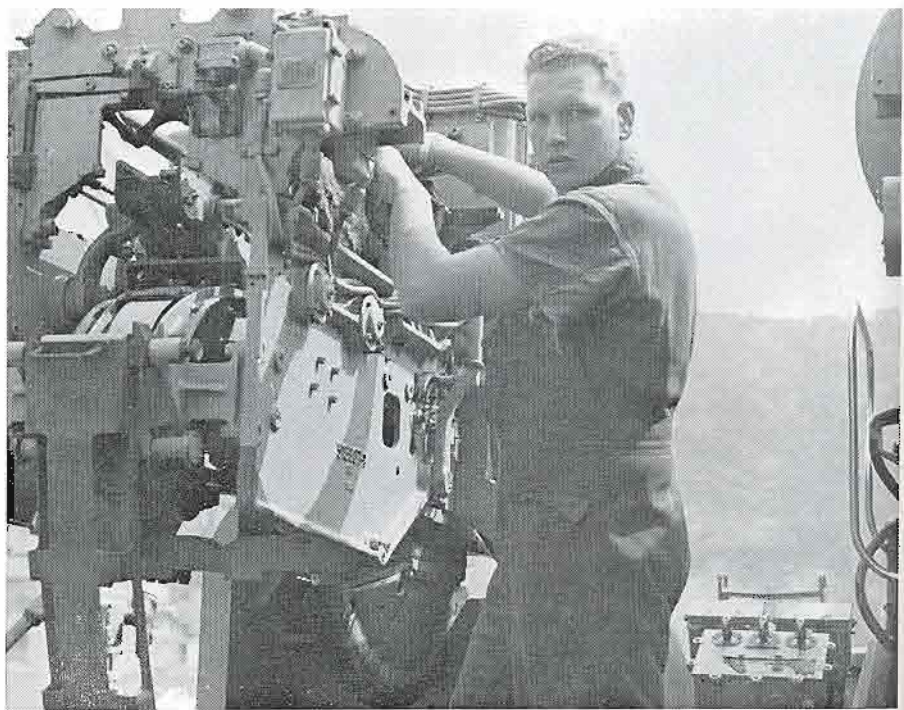
I WONDER WHY UPDYKE KEEPS
TELLING ME NOT TO THINK?



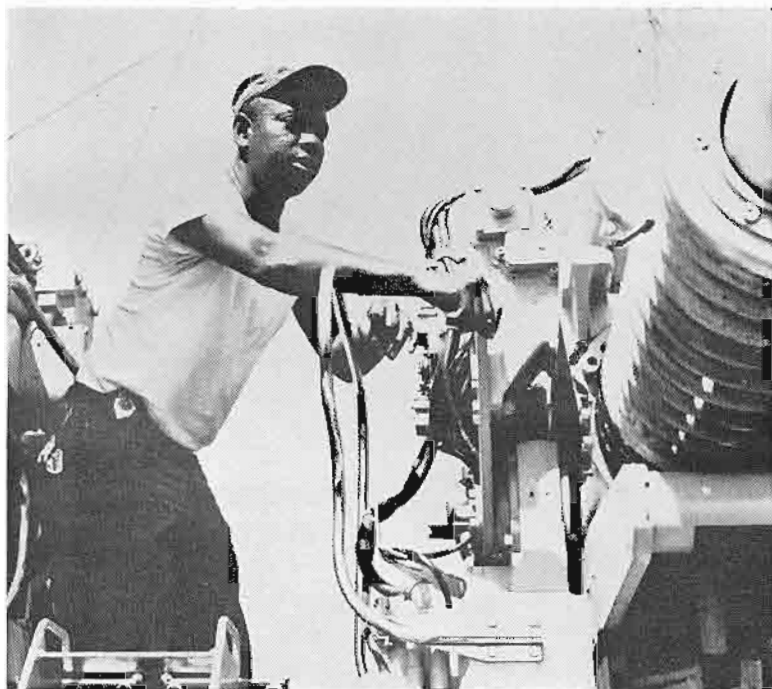
BRAIN TRAUMA?



I JUST CLEANED IT
6 MONTHS AGO.



YOU MEAN THEY DON'T LIKE CHARTREUSE?!



WHAT OF THE MONTH!?



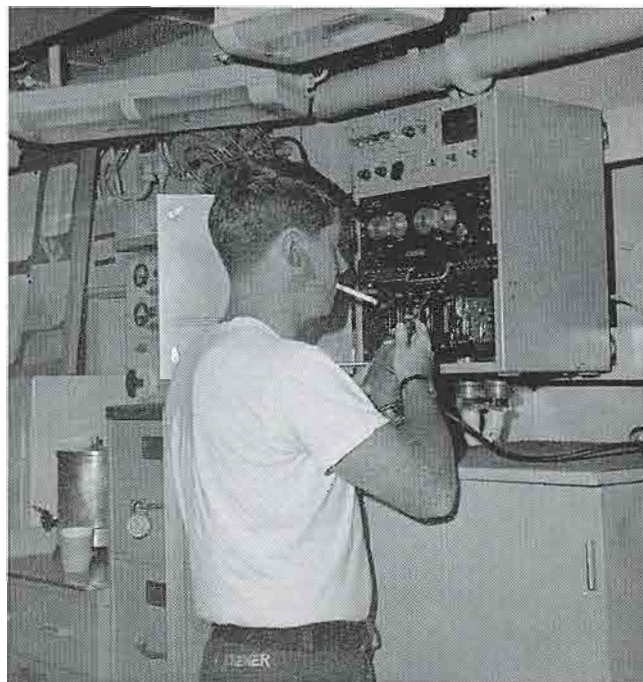
WM-DIVISION



BACK ROW L-R: HICKS FTM1, NYCE FTM1, CANTWELL FTM1, THOMAS FTM1, GREENO FTM1, LT ROSE, ARNOLD GMMC, RICKER GMM1, MEHNER T FTM1, CHANDLER FTM1. BROWN GMM1.

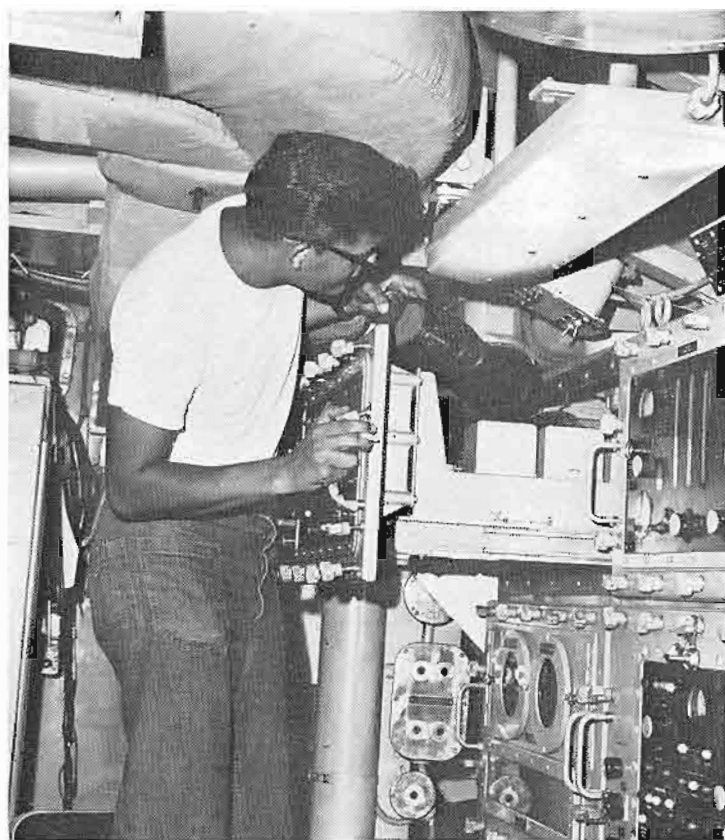
MIDDLE ROW L-R: FREDRICKS GMM3, BREWER FTM3, WILEY GMM3, DREALAN GMM2, PAULUS FTM2, CARLSON FTM2, SAMPSON FTM2, PARKS FTM3, KING FTM3, KERR FTM3, WILEY FTM1.

FRONT ROW L-R: BOYCE SN, MOORE GMMSN, DAVIS FTM3, COOK FTM3, CUISON FTM3, SPENCER FTM3, FIFER GMMSN.





THEY'LL NEVER FIND 'EM IN HERE.



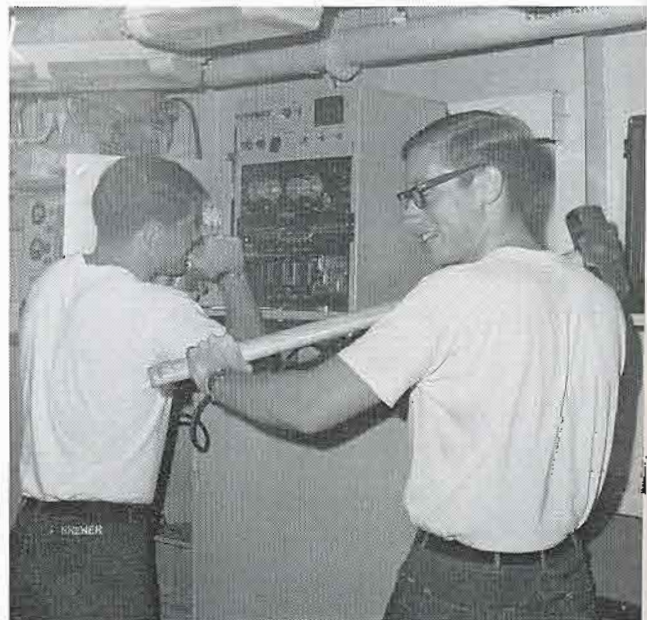
BRIGHT EYED AND BUSHY TAILED?!

NICE FENDER !!



I REMEMBER BACK ON THE JOUETT....

PRECISION EQUIPMENT REQUIRES PRECISION TOOLS.

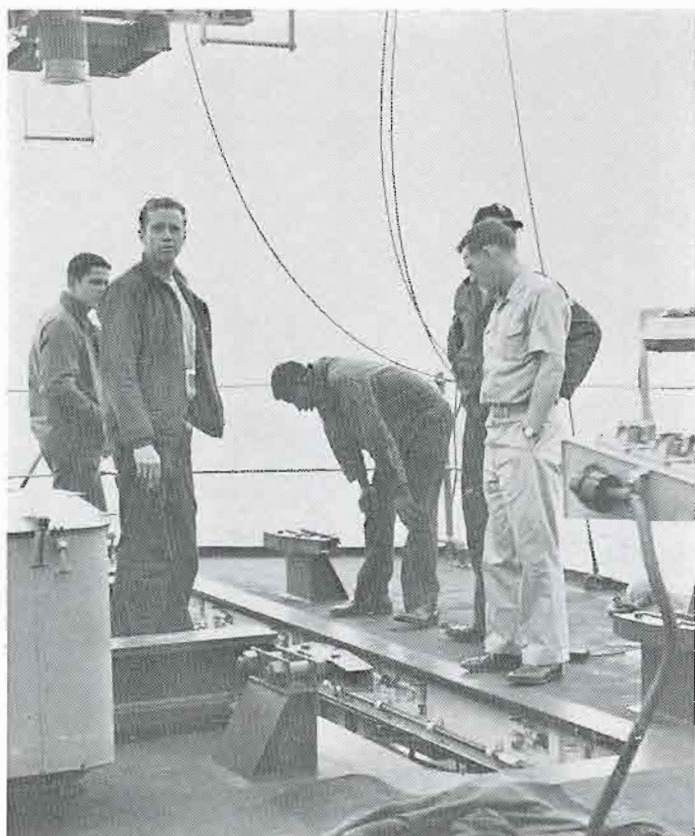


I WANT 8 DSOTS TOMORROW.



THE ENTIRE NEXT IN PORT PERIOD WILL BE SPENT COLLIMATING.





SORRY, I DIDN'T MEAN TO DROP THAT MISSILE ON YOU WILEY.



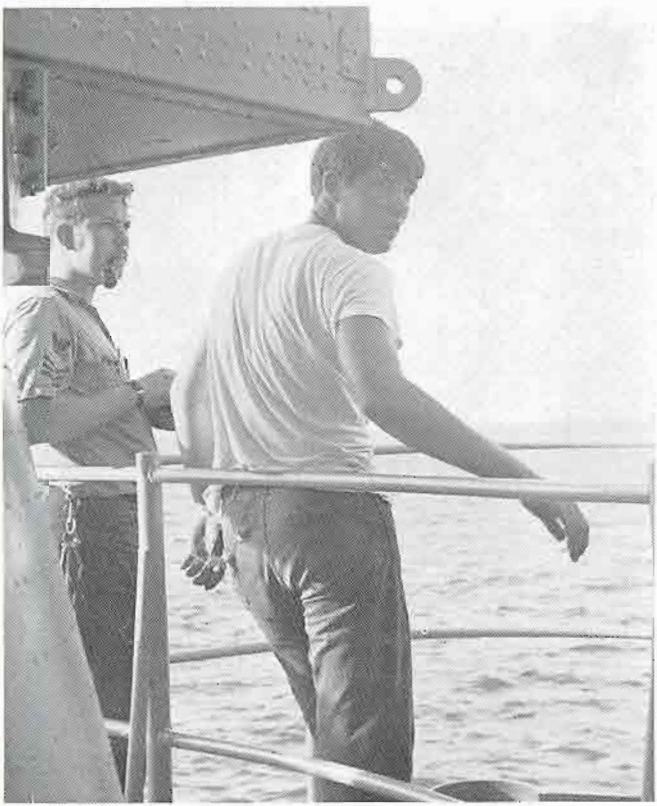
LET ME LOOK AT THE PICTURES TOO.

ONE OF THESE DAYS I'LL GET A GOOD LIGHTER....



THIS WILL KEEP YOUR TEETH WHITE!





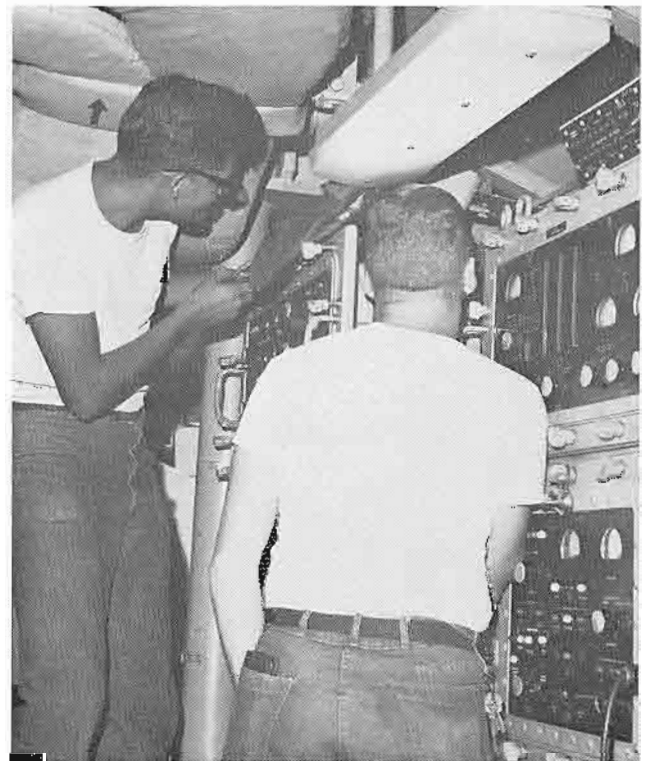
WHAT ME SKATE?!

THIS THING IS FAILSAFE!!



THE CHIEF IS COMING??

COME ON OUT OF THERE NYCE...



N-DIVISION



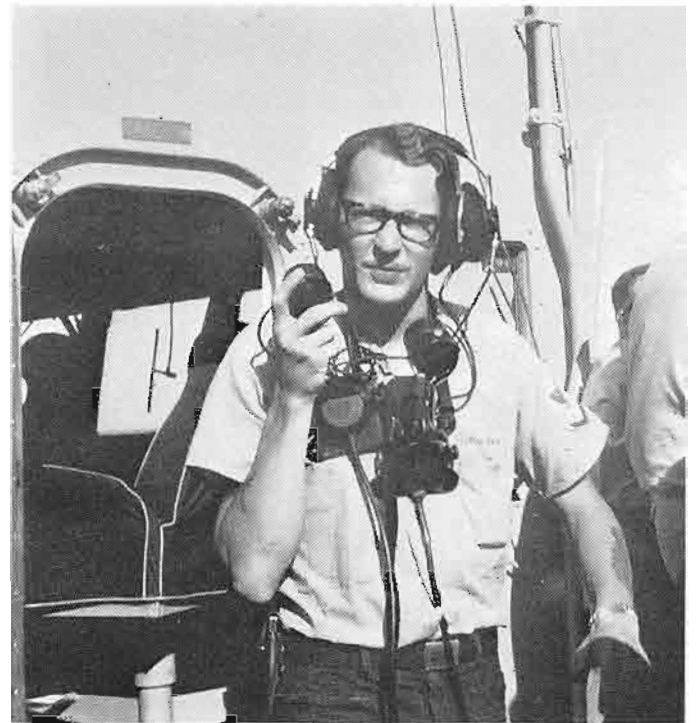
BACK ROW L-R: STIRES YN2, WIERSMA HM1, CASSON QMC, LTJG NAU, MINDT PNC, GANDEE QM2, SNEIDER YN3.
FRONT ROW L-R: TIBBETT QMSN, KNOWLES PNSN, STOREY QM3, O'BRIEN PC3, LUONGO SN, CHIONO PN3, MARTIN SN.





LET'S SEE, I THINK WE'RE SOMEWHERE IN
THE PACIFIC OCEAN...

I TALK A LOT.

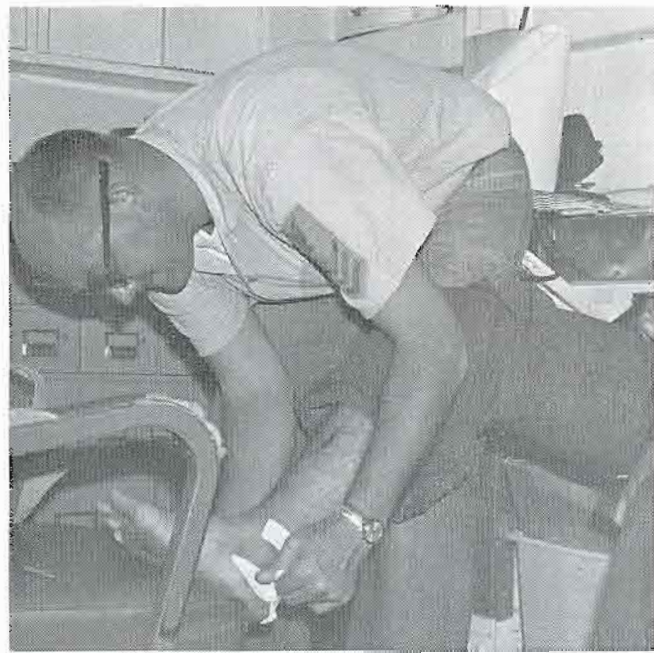


YEA IT'S A MESS. SO WHAT??



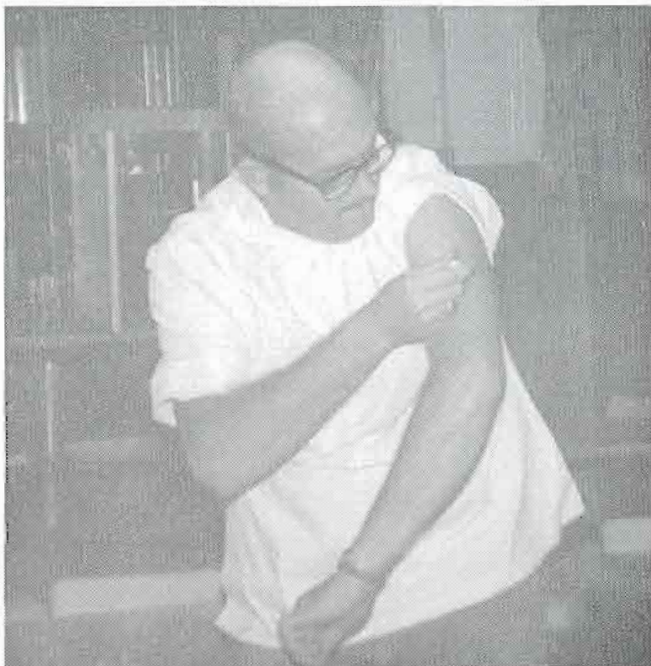


THIS IS HOW NOT TO DO IT!



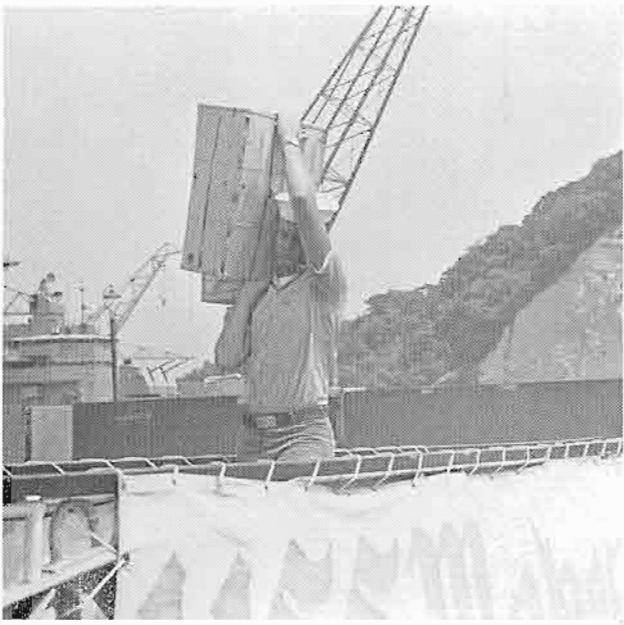
I KNOW THIS WILL COME OFF....

OUCH!!!!

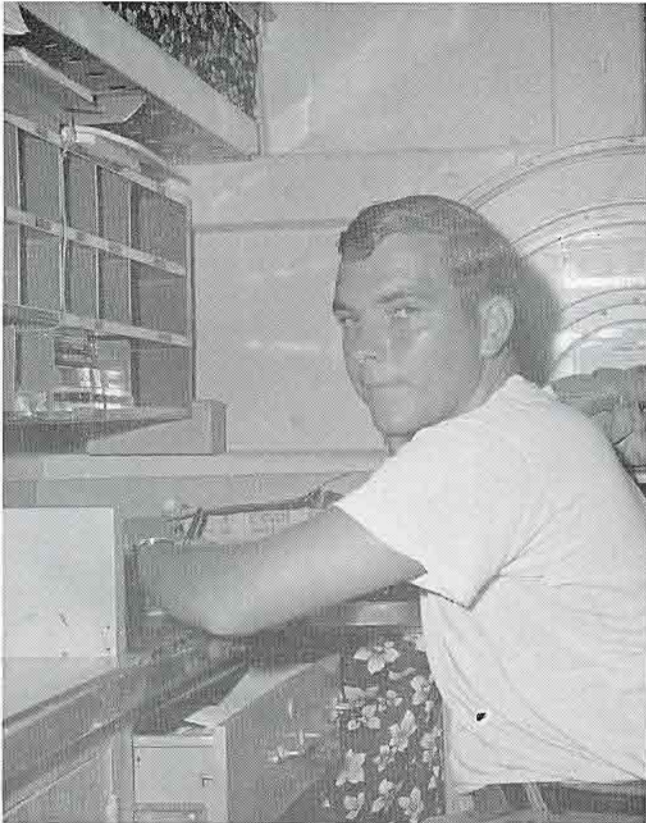


AS SHORT AS I AM, I'VE GOT TO EAT A LOT....

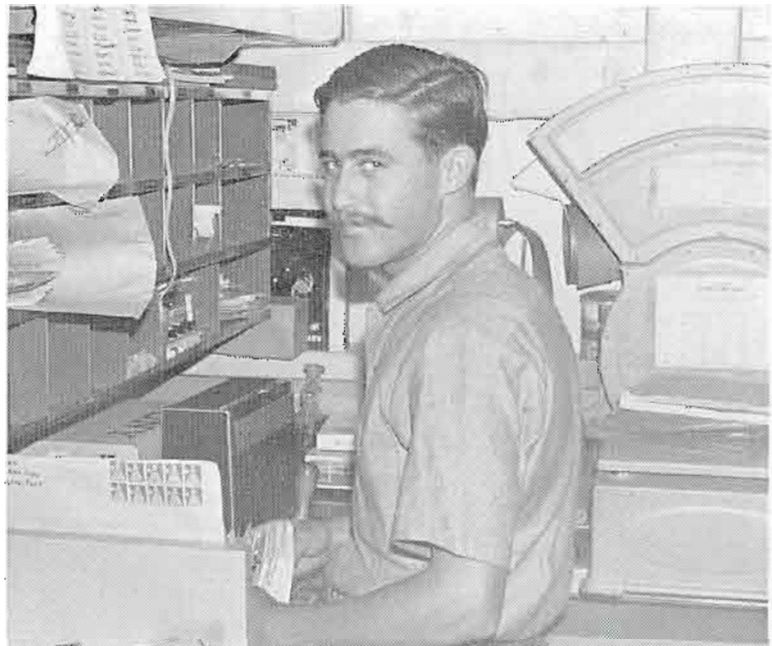




NO WE DIDN'T GET ANY MAIL ON THAT LAST HELO.



HEH! HEH! NO MAIL FOR BROWNBAGGERS.



ENGINEERING DEPARTMENT



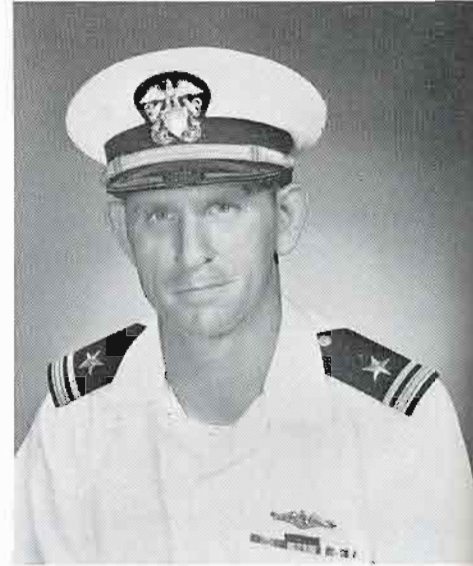
LT DONNDELINGER



LT THOMPSON



LTJG EYER



LTJG MCDOWELL

TANNER BTCS

ZIMMERMAN MMCS

TULL EMCS





LINSEY MMC



PEARSON MMC



PEARSON BTC

MANAGO EMC



MAGAFFIN BTC



SUPPLY DEPARTMENT



LT GALLIGAN



LTJG SINGLETON

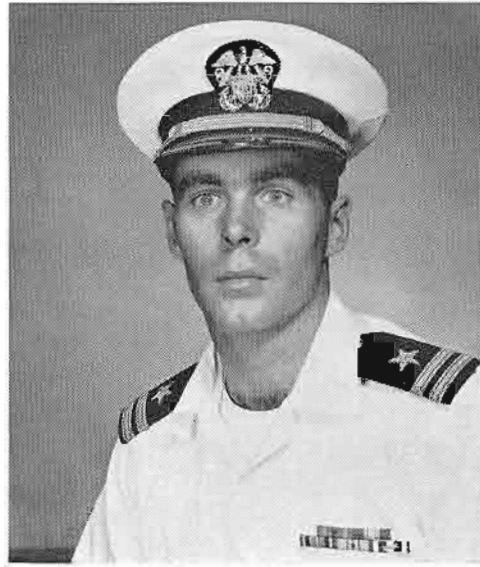


STURLAUGSON SKCS



KNOWLTON CSC

OPERATIONS DEPARTMENT



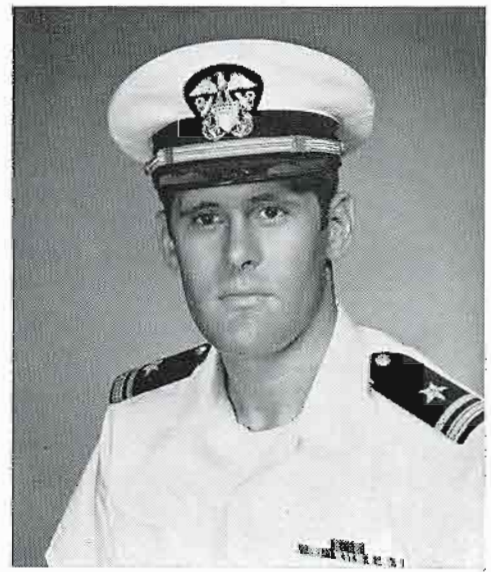
LT ELLSWORTH



LTJG MEASLE



LT BERGEN



LTJG MULLIKEN

LTJG NELSON



LTJG LIGLER



LTJG FRANK





WILSON ETCM



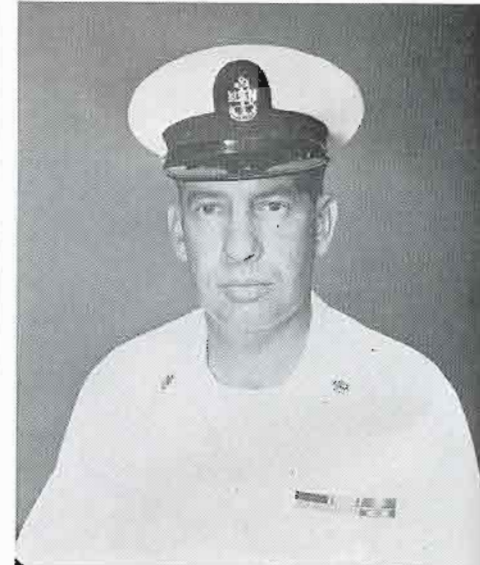
LOLWING DSCS



VOLK RDCS



POWELL RMCS



ROBINSON RDC



COKER ETC



ST CLAIR RDC

WEAPONS DEPARTMENT



LCDR SLYE



LT ROSE



LTJG NOYCE



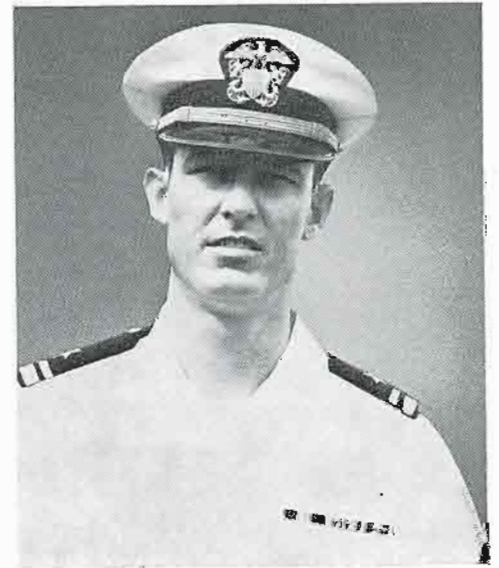
LTJG WILLIAMS



LTJG NEUMAN



LTJG STEWART



LTJG COOPER



MC SPADDEN FTCS



NIEMIERA BMC



NOONAN FTMC



MAC DONALD STC



PADILLA GMMC

NAVIGATION DEPARTMENT



LT MC BRIDE



LTJG NAU



CASSON QMC



MINDT PNC

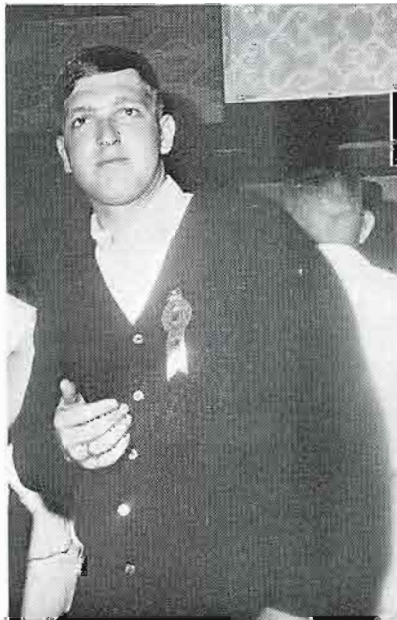
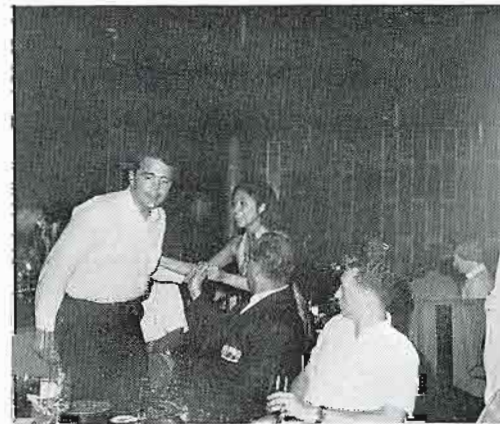
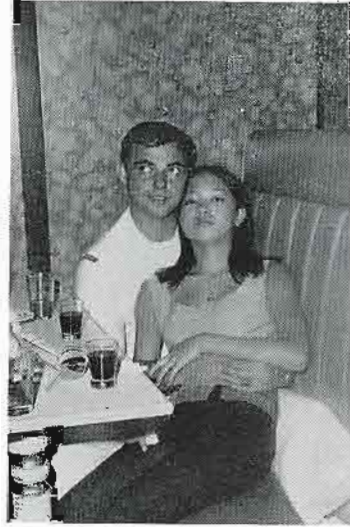


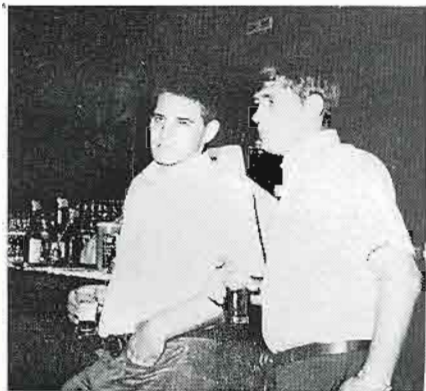
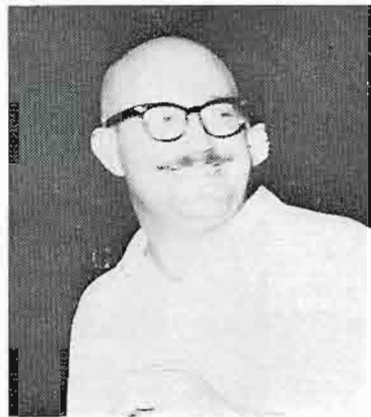
WIERSMA HMC

HONG KONG

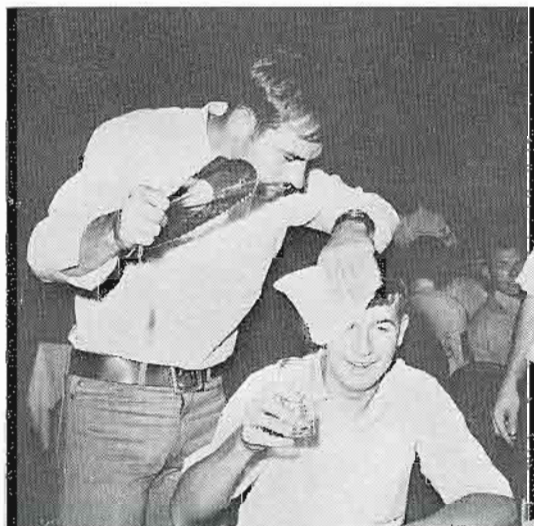


"FIFI LARUE"





"MOM, I'D LIKE YOU TO MEET KITTY"



SHIP'S PARTY

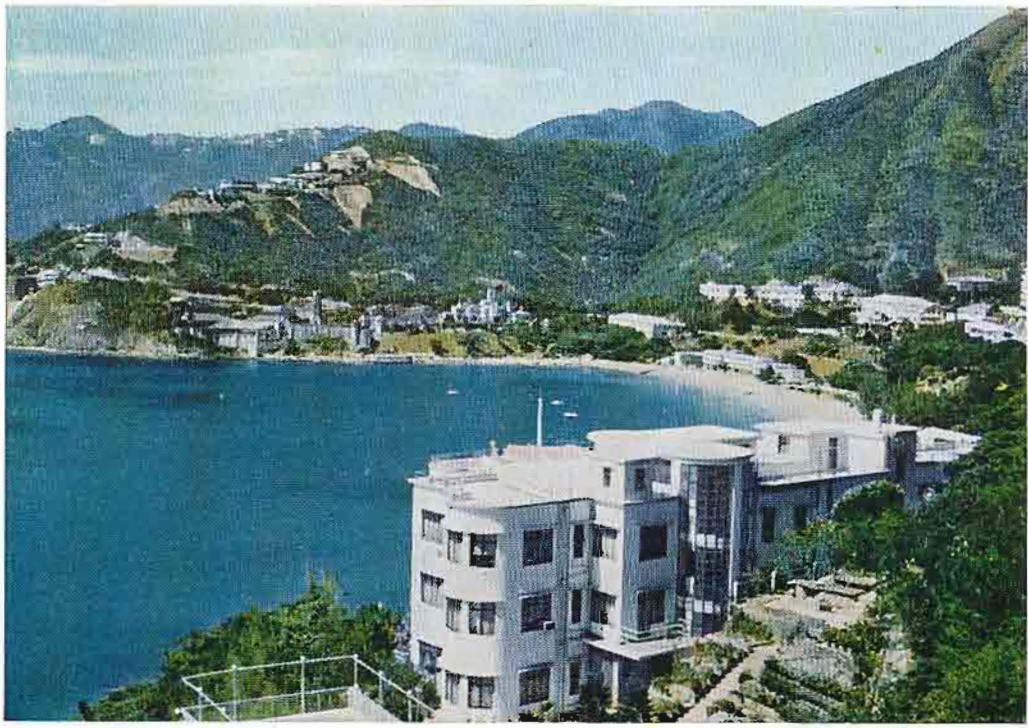


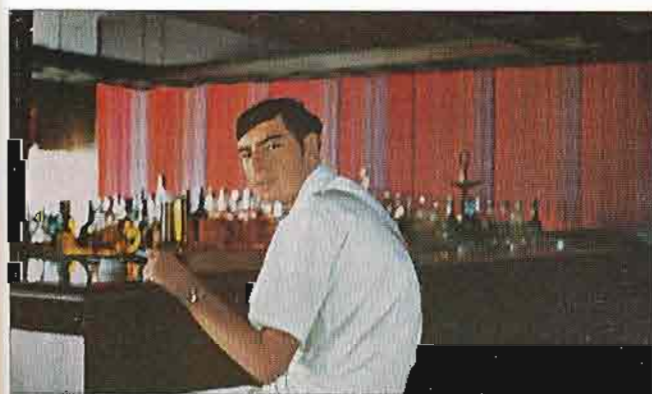




HONG KONG

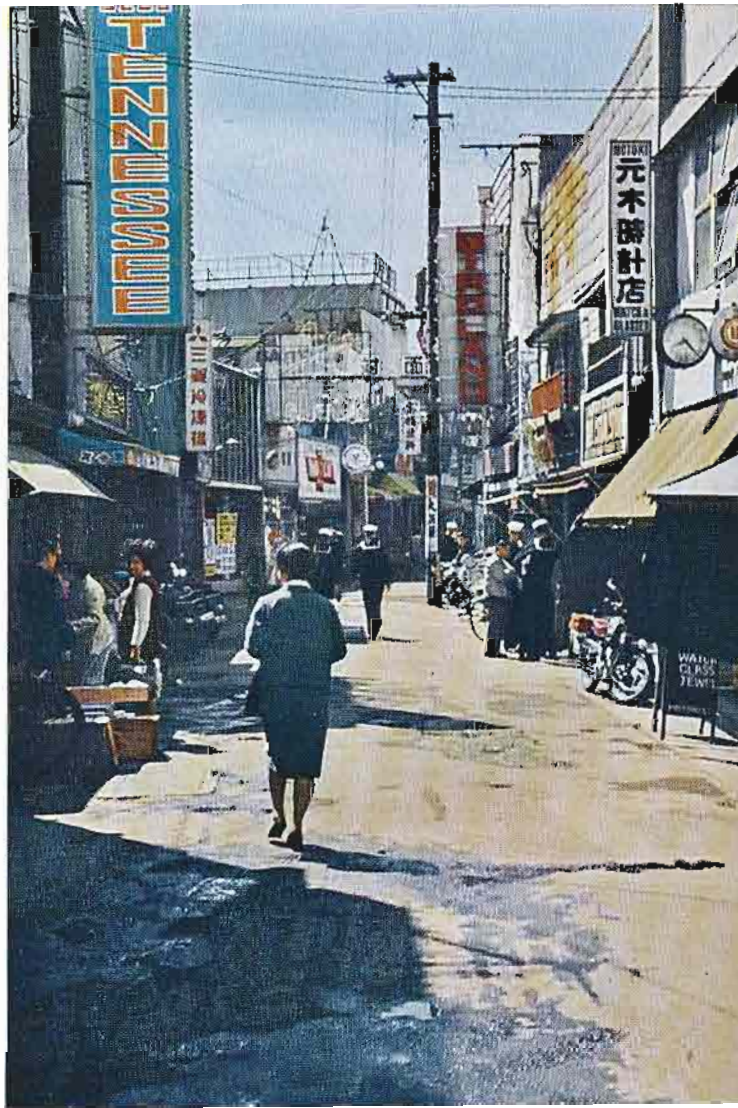
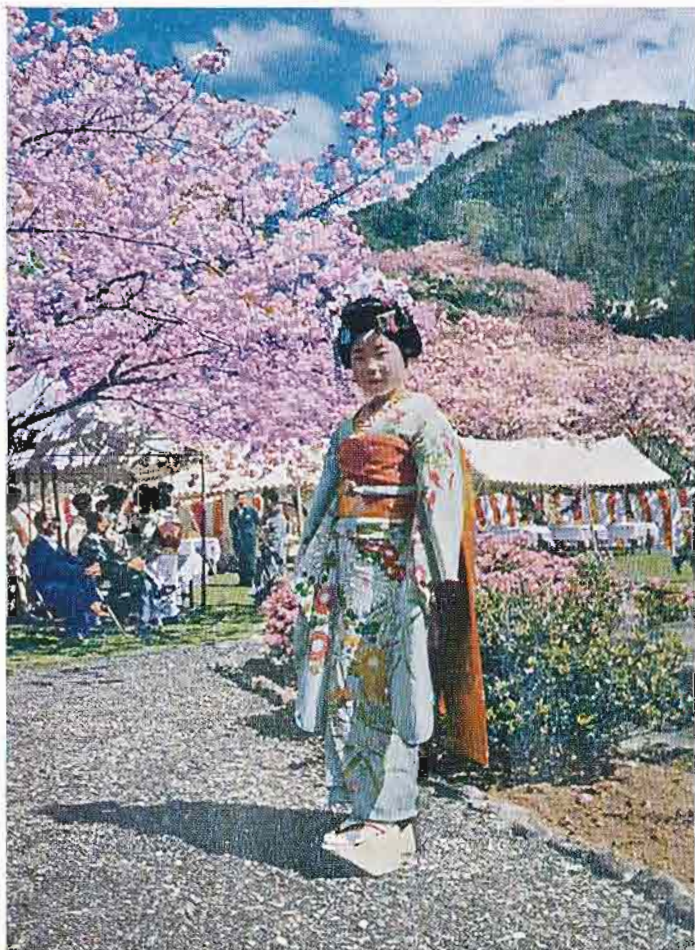


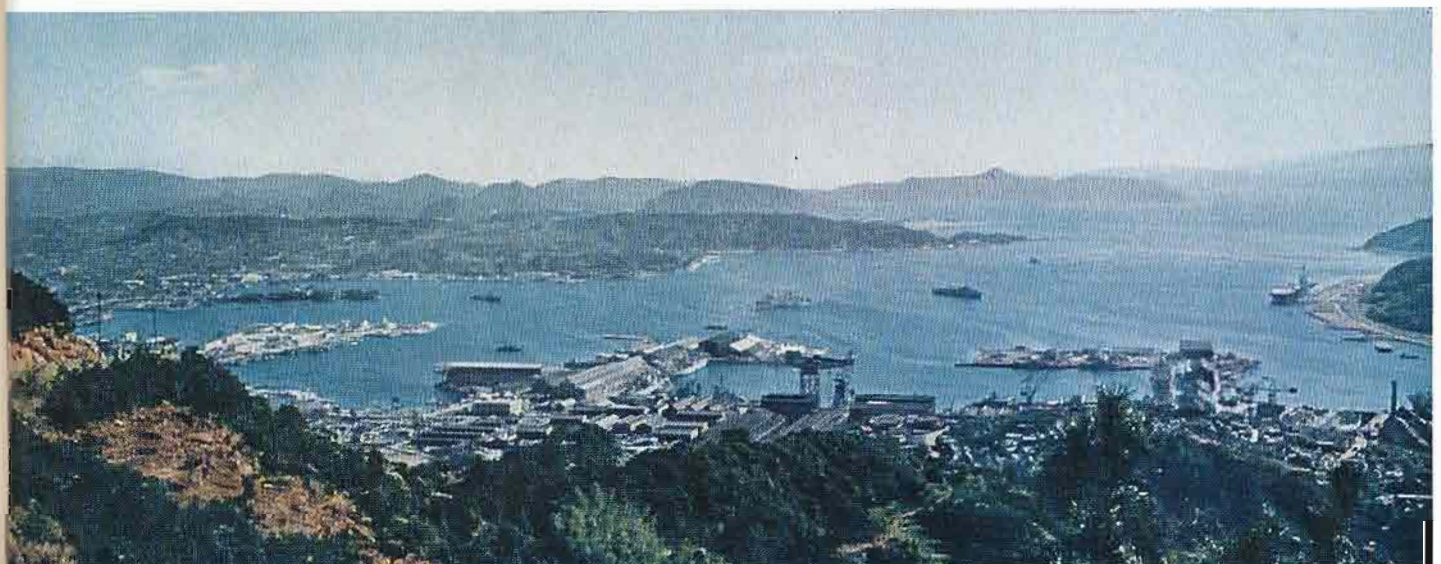






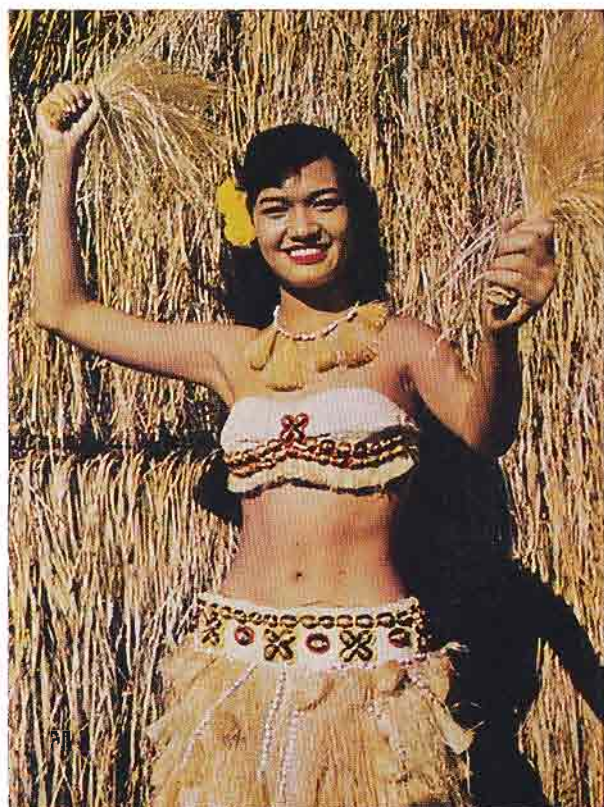
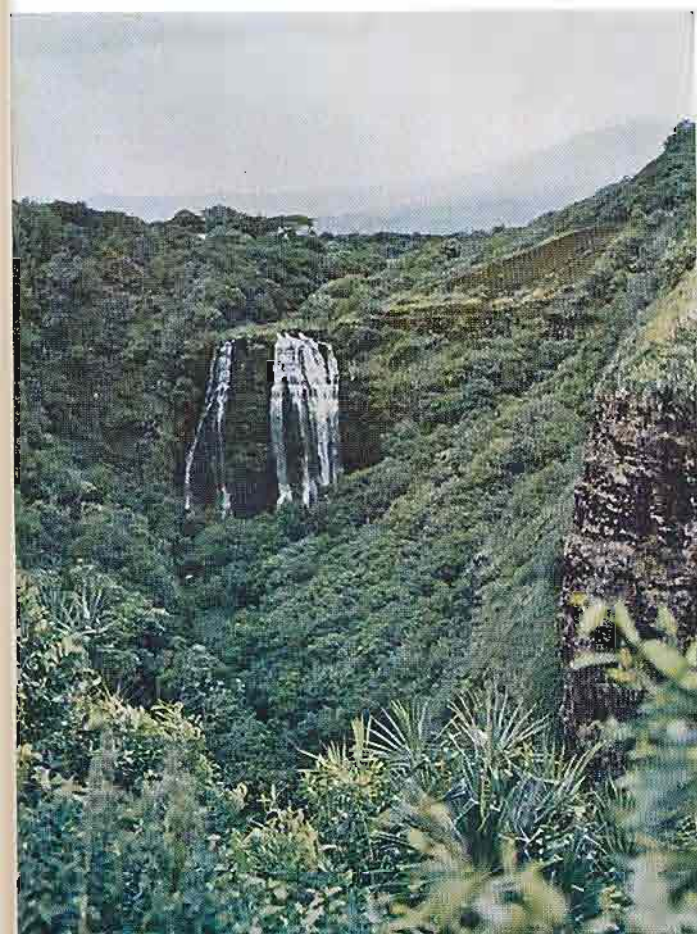
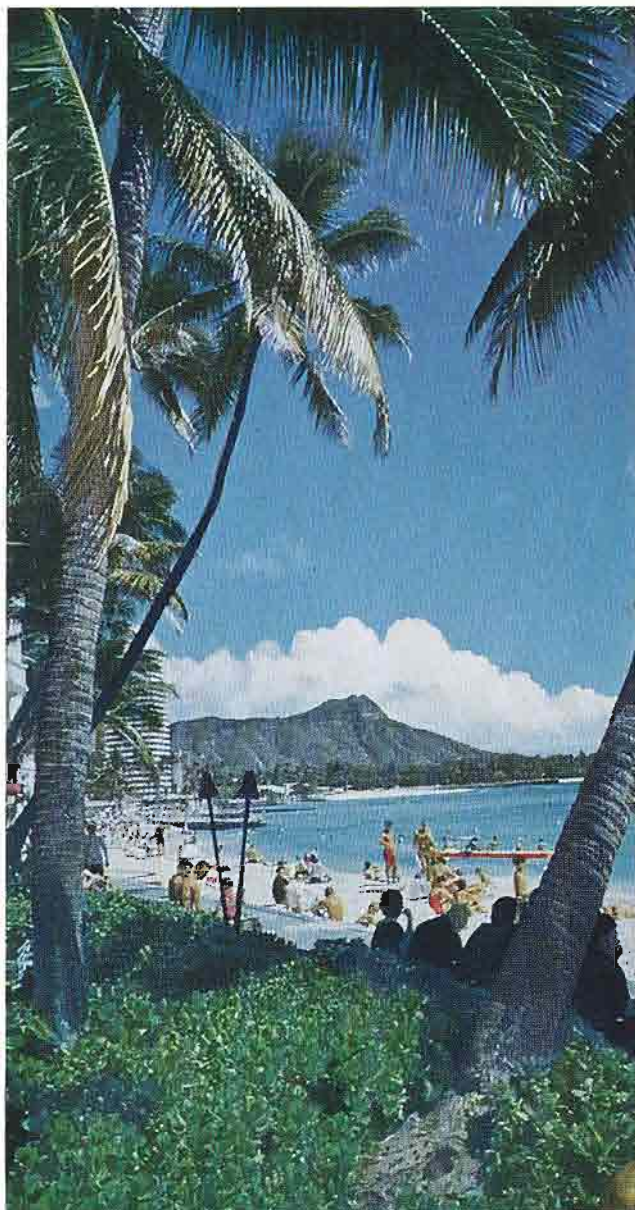
JAPAN

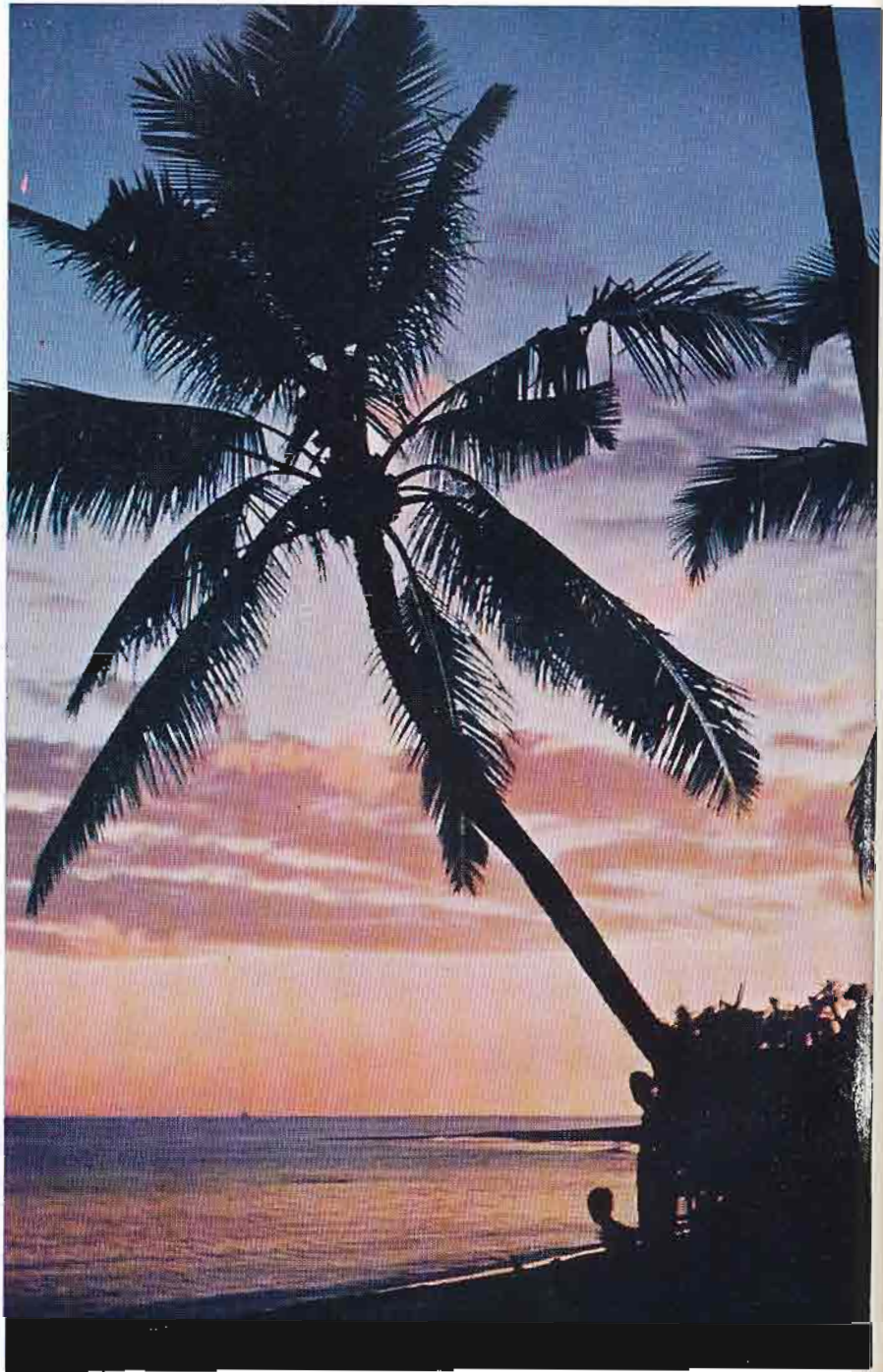
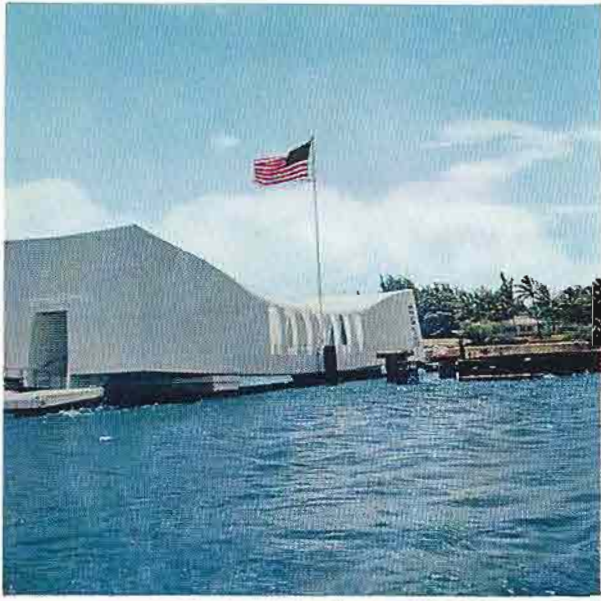






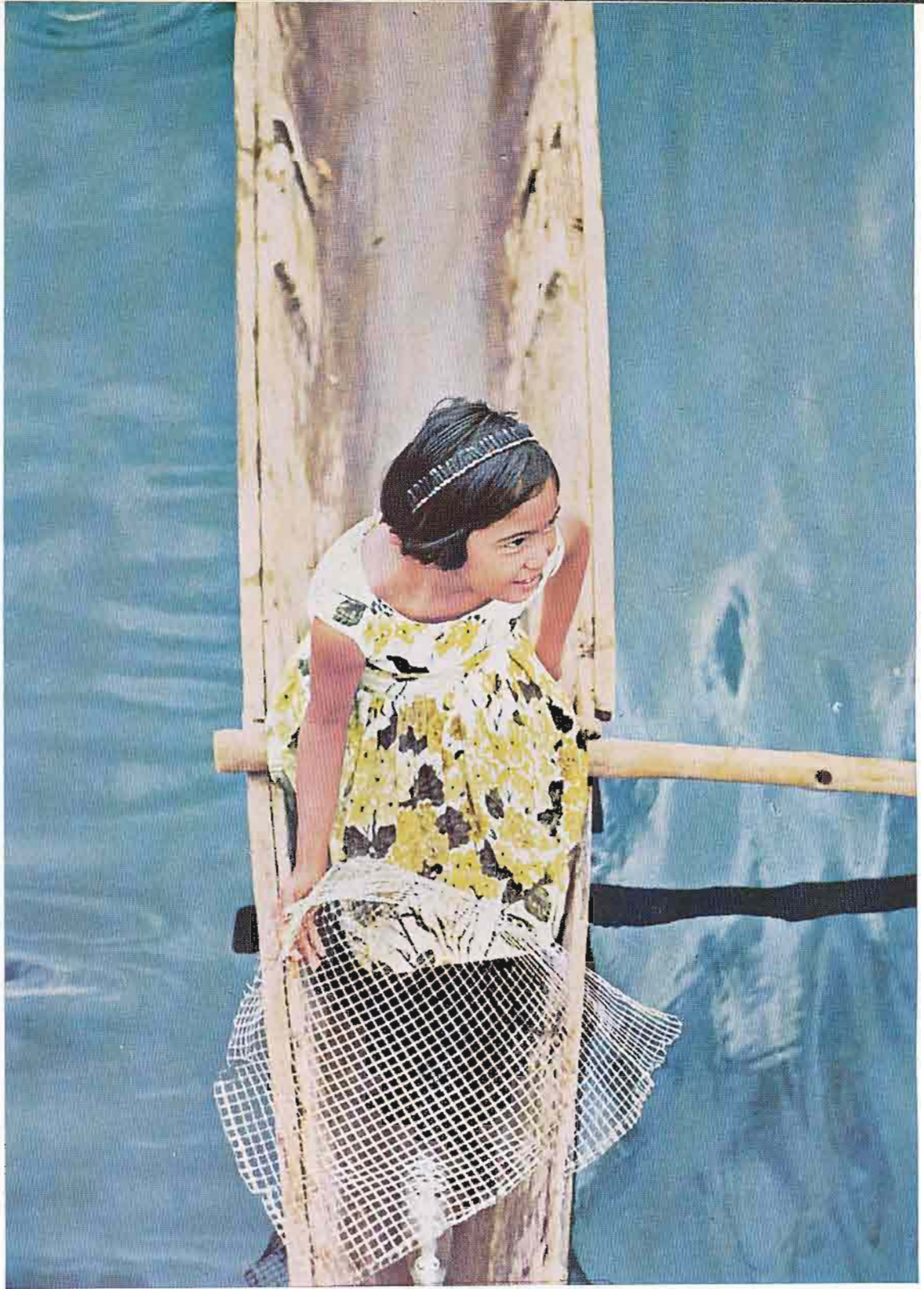
H
A
W
A
I
I

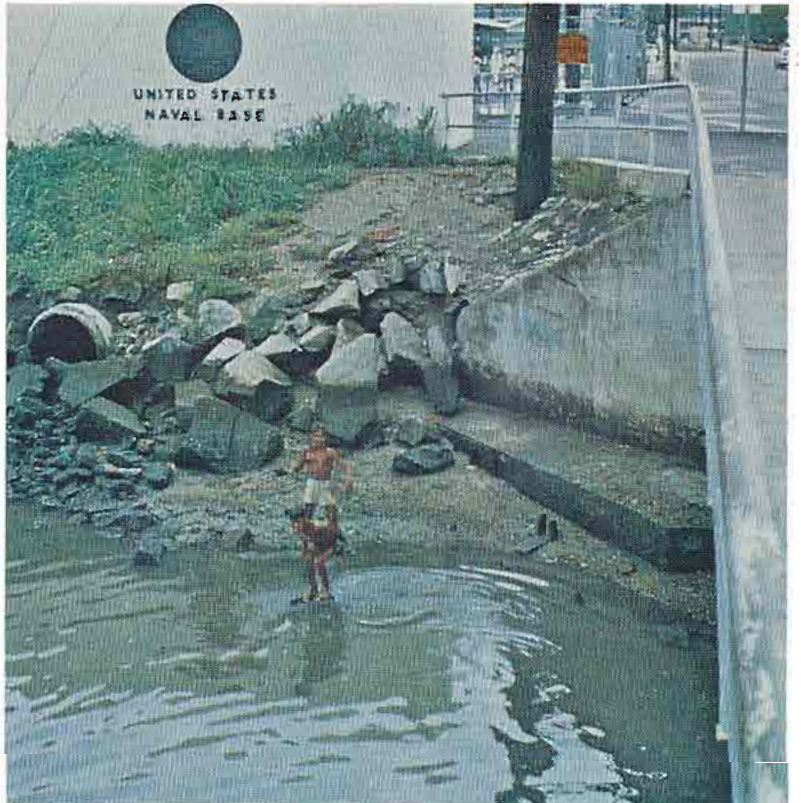
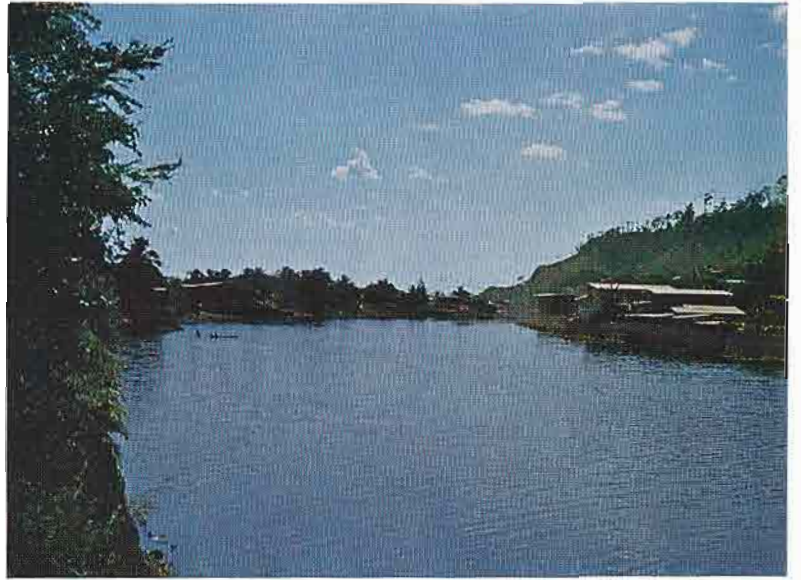




PHILIPPINES







MANAGING EDITOR

MM1 BROWN

BUSINESS MANAGER

LTJG WILLIAMS

PHOTO EDITOR

FTM3 WEBB

ASS'T PHOTO EDITOR

RDSN SCHROEDER

PHOTOGRAPHERS

FTM3 WEBB

RDSN SCHROEDER

Printed in Japan by:

Daito Art Printing Co., Ltd.

19, 2-chome, Shintomi-cho, Chuo-ku, Tokyo



