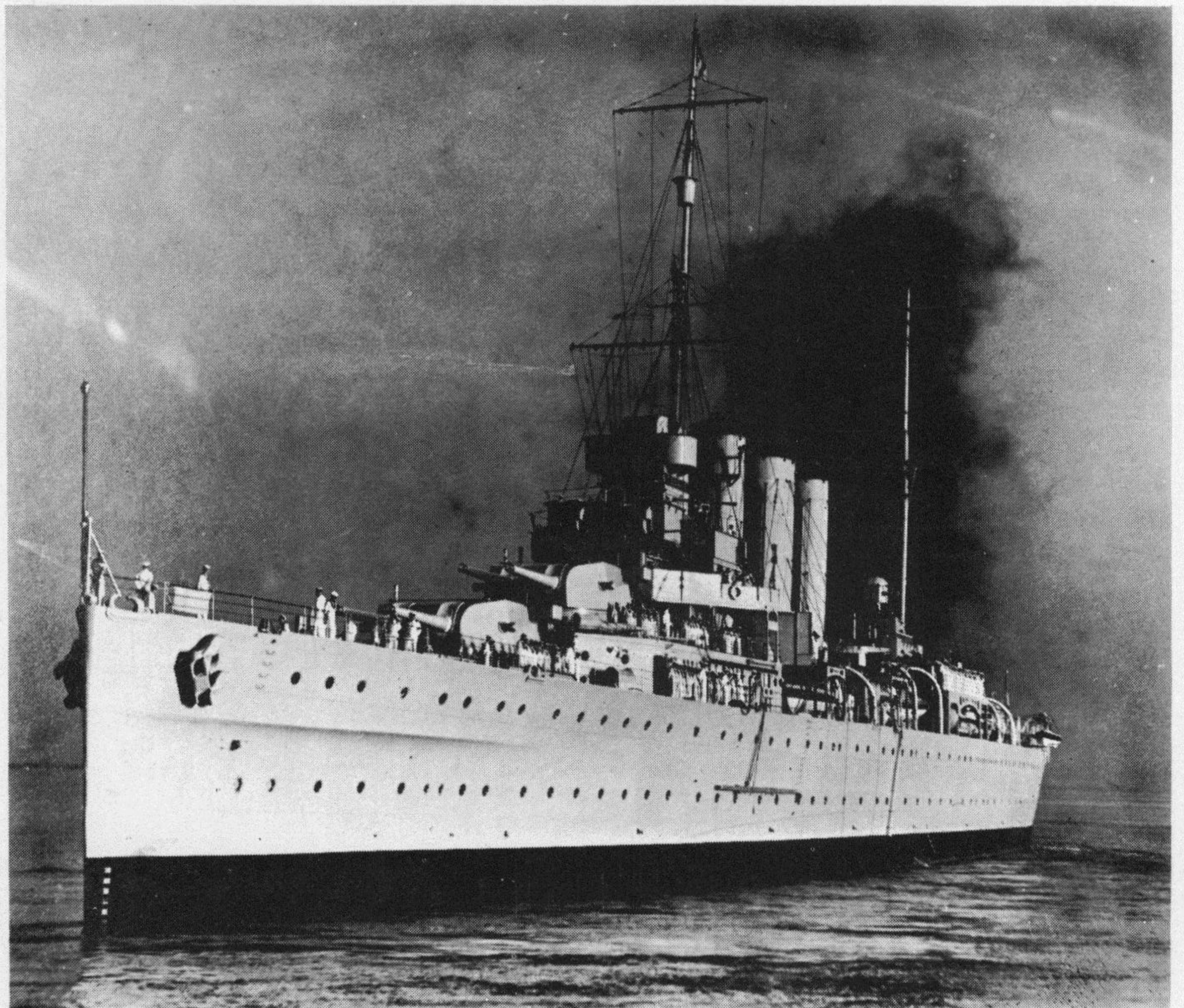


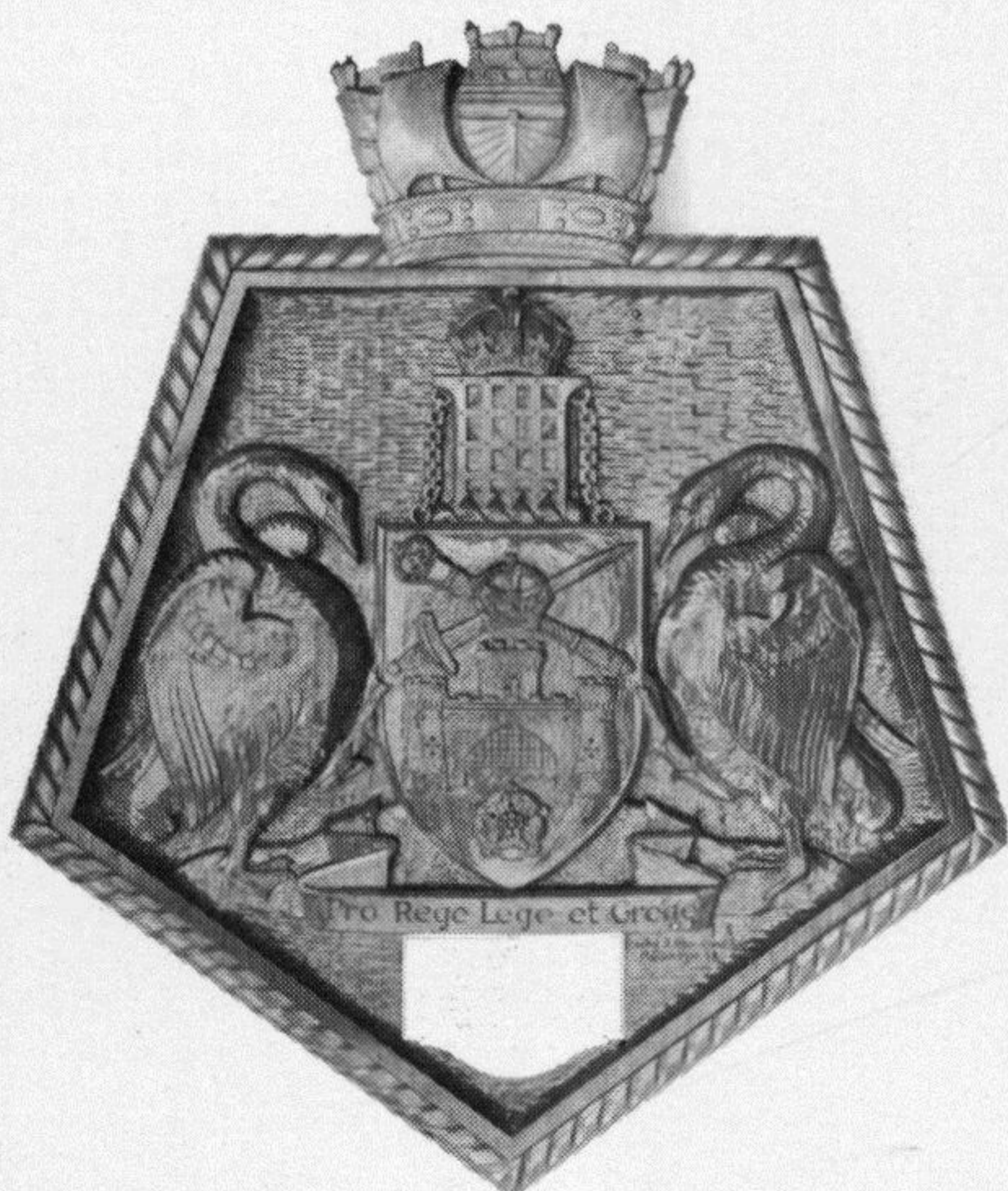


"I was Officer-in-Charge of the Fleet Camera Party at Pearl Harbor when I first heard of CANBERRA. It was on a night in August of 1942 that a brave cruiser of His Majesty's Australian Navy, in company with three United States cruisers, went down at sea, fighting the Japanese enemy. This was the first CANBERRA"

**H.M.A.S.
CANBERRA**



**"Her badge is a living symbol
of our ties with her . . ."**



Commissioned on July 9, 1929, HMAS CANBERRA, a "County Class Heavy Cruiser," remained in commission during the thirties and upon outbreak of war with Japan had over 175,000 miles of wartime operational steaming to her credit. Following the outbreak of the Pacific war, this veteran Australian cruiser continued her role of escort-cruiser, convoying troops to New Guinea and to the Malayan-Javan theater. She later put into Sydney on February 17, 1942, for three months of extensive refitting ending in mid-May.

In June, 1942, HMAS CANBERRA took part in offensive sweeps in the Coral Sea as part of Task Force 44 (including U. S. Ships CHICAGO and SALT LAKE CITY).

In August, she served as part of the naval forces supporting the American landing at Guadalcanal, ending with her loss at the battle of Savo Island on the night of August 8th and 9th, 1942.