

Commanding Officer: Captain A.L. HENRY

Shouldering the responsibility for 450 men and millions of dollar of equipment

Captain Henry was born in Atlanta, Georgia on June 8, 1935. He attended local schools in College Park, Georgia and in May 1952 was graduated from the Georgia Military Academy where he won an honor student appointment to the U.S. Naval Academy. Upon graduation in 1956 he was commissioned as Ensign and reported aboard, **USS BREMERTON (CA-130)** as "F" Division Officer. Following this tour, he served as Gunnery Officer and Senior Watch Officer, **USS GEARING (DD-710)**.

He served in a variety of roles during the 60's; aide to the Commander, Charleston Naval Shipyard; attended the Naval Postgraduate School in California and the Executive Officer of **USS W.C. LAWE (DD-763)** and commanding Officer of the **USS SENECA (ATF-91)**.

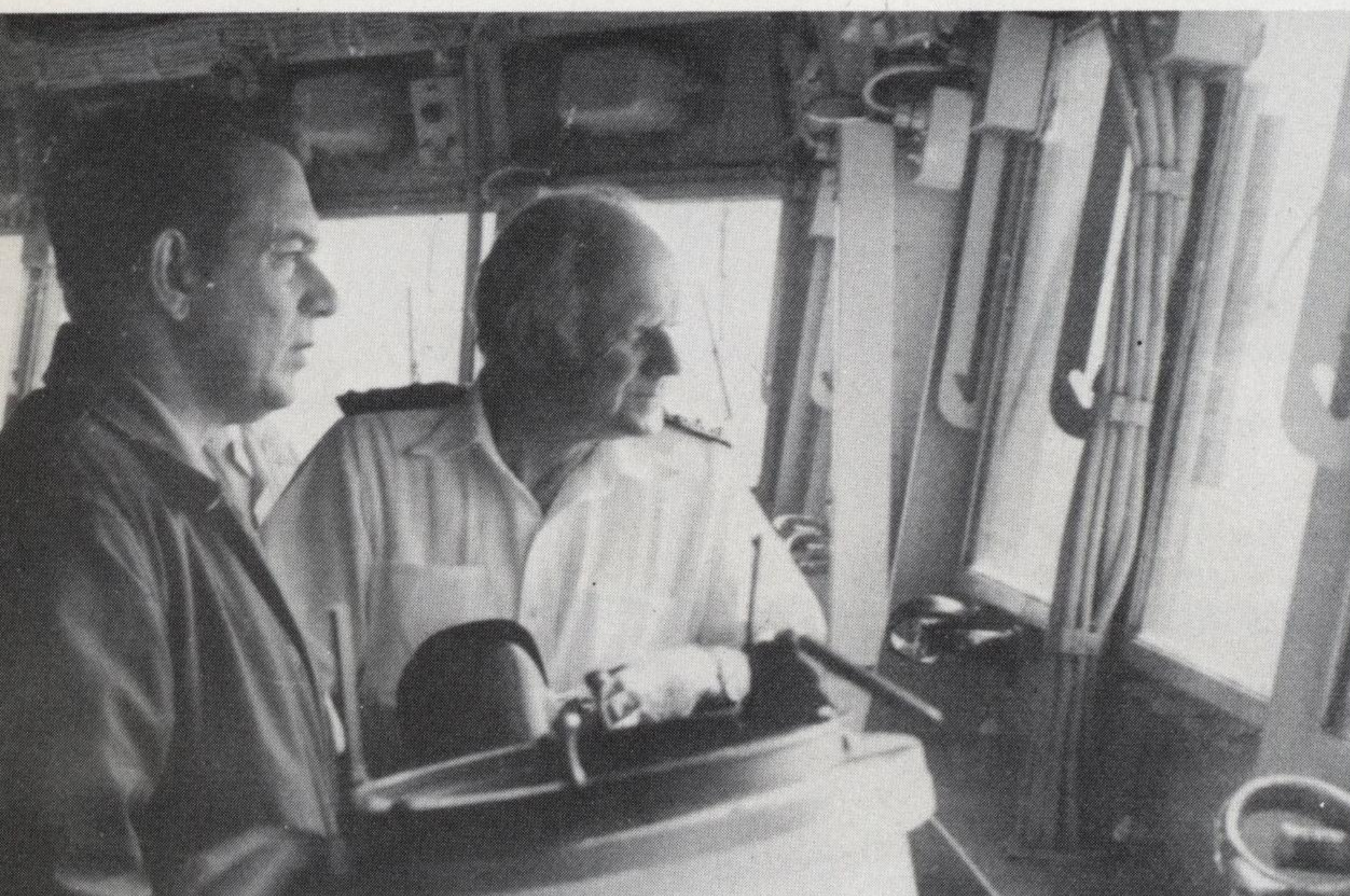
After a tour in Washington, where he won the Navy Commendation Medal, he commanded the River Assault Squadron 15 in Vietnam.

Captain Henry then commanded **USS OUELLET (DE-1077)** in the Pacific Fleet before returning again to duty in Washington as the Executive Assistant to the Commander, Navy Recruiting Command. He was graduated from the National War College in June of 1976 and reported aboard **BIDDLE** in August of that year.

Captain Henry is married to the former Shelby Jean Howell of Tyner, North Carolina. They have two daughters, Susan (9) and Ruth (6).



Captain A. L. Henry



Capt. Henry with VADM Macdonald